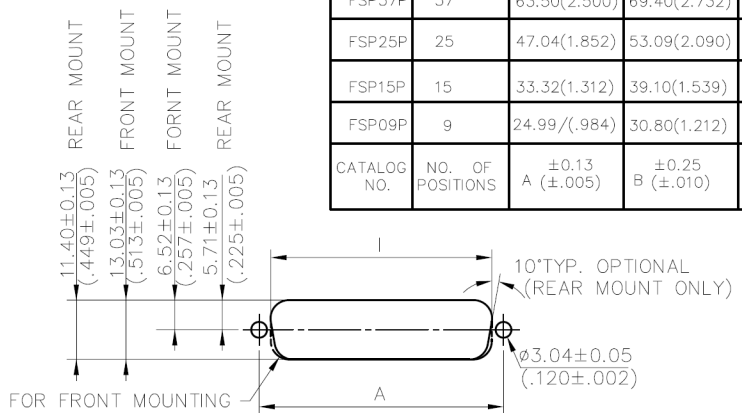


SPECIFICATION :
 .CURRENT RATING : 1 AMP.
 .INSULATOR RESISTANCE : 1000 MΩ MIN. (AT 500 V DC)
 .DIELECTRIC WITHSTANDING VOLTAGE : AC 500 V MIN. (FOR 1 MINUTE)
 .OPERATING TEMPERATURE : -55°C TO 105°C
 .CONTACT RESISTANCE : 15 mΩ MAX.
 .INSULATOR MATERIAL : PBT WITH GLASS-FIBER REINFORCED UL 94V-0
 .CONTACT MATERIAL : BRASS
 .CONTACT PLATING : GOLD OVER NICKEL
 .WIRE SIZE : AWG 26 & 28 STRANDED , 1.27mm CONDUCTOR CENTRE FLAT CABLE

FSP37P	37	63.50(2.500)	69.40(2.732)	49.86/(1.963)	47.09/(1.854)	64.60/(2.150)	57.10/(2.248)
FSP25P	25	47.04(1.852)	53.09(2.090)	33.24/(1.309)	30.47/(1.200)	38.14/(1.502)	40.90/(1.610)
FSP15P	15	33.32(1.312)	39.10(1.539)	19.39/(.763)	16.62/(.654)	24.00/(.945)	26.60/(1.047)
FSP09P	9	24.99/(.984)	30.80(1.212)	11.08/(.436)	8.31/(.327)	16.10/(.634)	18.60/(.732)
CATALOG NO.	NO. OF POSITIONS	A ±0.13 (±.005)	B ±0.25 (±.010)	C ±0.13 (±.005)	D ±0.13 (±.005)	E ±0.25 (±.010)	F ±0.25 (±.010)



55.45/(2.183)	59.08/(2.326)	60.73/(2.391)
38.96/(1.534)	42.52/(1.674)	44.27/(1.743)
25.25/(.994)	28.80/(1.134)	30.53/(1.202)
16.92/(.666)	20.47/(.806)	22.20/(.874)
G ±0.25 (±.010)	I±0.13/(.005) REAR MOUNTING	I±0.13/(.005) FRONT MOUNTING

- SERIES**
F D-SUB I.D.C. CONNECTOR
- HOUSING CONSTRUCTION TYPES**
SP - STANDARD THROUGH HOLES (ALL PLASTIC TYPE)
- NUMBER OF CONTACTS**
.09 - 9 POSITIONS
.15 - 15 POSITIONS
.25 - 25 POSITIONS
.37 - 37 POSITIONS
- CONTACT TYPE**
.P - PLUG (MALE)
.S - SOCKET (FEMALE)

RECOMMENDED PANEL CUTOUT DIMENSIONS



			PART NO	
MATERIAL	TOLERANCE UNSPECIFIED .000 ± .00 ± 0.25 .0 ± ANGLE ± 1°	the vital component		
FINISH	DRAWN 葉建忠 2002/05-'96 DESIGNER CHECKED Peter 7/19'01 APPROVED James 7/19'01	SCALE 1 : 1	UNIT mm	SHEET 1/1
		DRAWING NO		REV 7