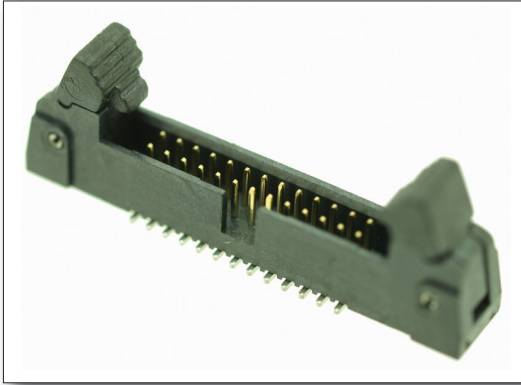
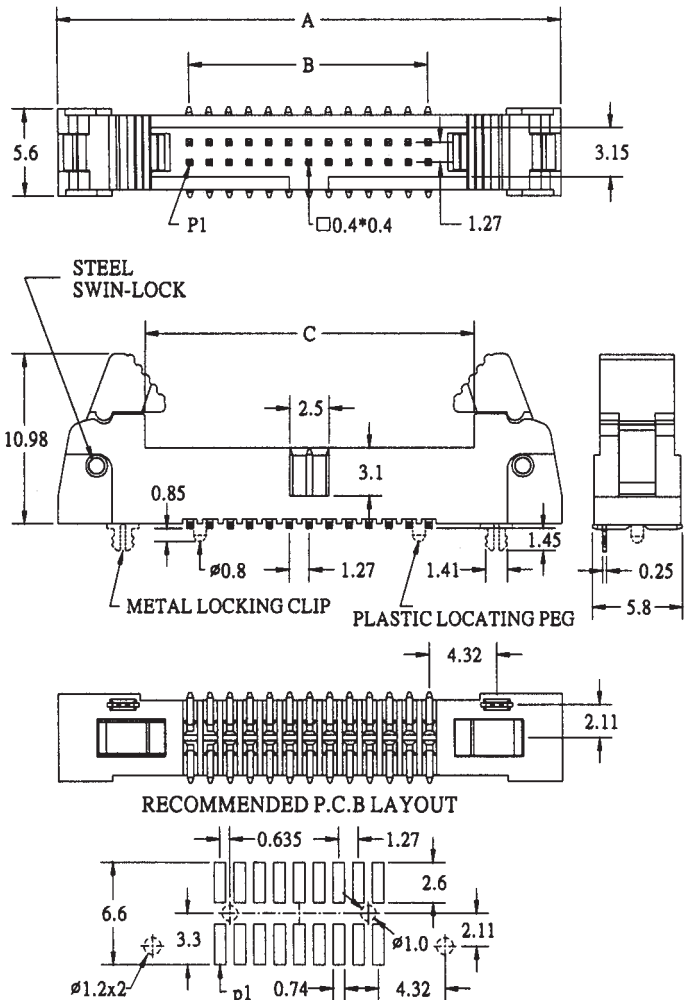


## 1.27 x 1.27mm Pitch Dual Row Surface Mount Micro Latch Headers C44a-xx-BSB-(y)-1G Series

Dual row surface mount latched box header  
Gold plated mating contacts and tin plated PCB contacts  
Mates with Valcon A32 series IDC sockets



POSITION	A	B	C
6	19.58	2.54	8.32
8	20.85	3.81	9.59
10	22.12	5.08	10.86
12	23.39	6.35	12.13
14	24.66	7.62	13.40
16	25.93	8.89	14.67
20	28.47	11.43	17.21
22	29.74	12.70	18.48
26	32.28	15.24	21.02
30	34.82	17.78	23.56
34	37.36	20.32	26.10
40	41.17	24.13	29.91
44	43.71	26.67	32.45
50	47.52	30.48	36.26
60	53.87	36.83	42.61
68	58.95	41.91	47.69
80	66.57	49.53	55.31



### Ordering Information:

#### C44a-xx BSB - (y) - 1G

1 2 3

**Option 1(xx)** Number of contacts (in total)  
**06,08,10,12,14,16,20,22,26,30,34,40,44,50,60,68 & 80**  
Please note: 06 = 2x3 positions ~ 80 = 2x40 positions  
Please note: Some sizes may be subject to MOQ

**Option 2** Locating peg (plastic or metal):  
**A** = With locating peg (May be subject to MOQ)  
**B** = With no locating peg (Standard)  
**C** = With metal PCB locking clip (May be subject to MOQ)

**Option 3(y)** Packaging type:  
**B** = Tube with no pick & place tab (Standard)  
**A** = Tube with pick & place tab (May be subject to MOQ)  
**C** = Tape & reel with pick & place pad (Min. Reel quantity will)

### Specification:

Insulator Material:	Black LCP UL94V-0
Contact Material:	Phosphor Bronze
Contact Plating:	Selective gold flash plated contacts
PCB Contact Plating:	Tin plated
Current Rating:	1 Amp
DWV:	250V AC for 1 minute
Insulation Resistance:	1000 MΩ min.
Contact Resistance:	30 mΩ Max.
Operating Temperature:	-40°C to +105°C

Mates with A32 series IDC sockets