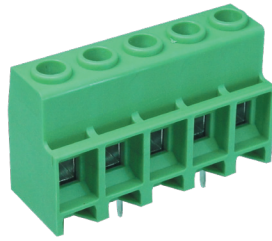
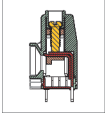


MH140 PCB Terminal Block, High Power- Modular



DIMENSIONS/POSITIONS

MH140-016M

Pitch	10.16mm
Poles	2 ~ 8Poles
Dimension A	10.16mm
Length	A= 10.16xP(P≥2)
Housing Material	PA 66
Cage Clamp	Brass, Tin Plated
Contact	Copper, Tin Plated
Screw Thread	M4, Steel, Zinc Plated
Wire Size	6 ~ 20AWG
PCB Hole Diameter	1.6mm
Tightening Torque, Max.	15 Lb-in
Operating Temperature	-40°C to +105°C

TECHNICAL DATA

Connection in acc. with standard EN-VDE	
Nominal Current I _n	60A
Nominal Cross Section	10mm ²
Maximum load current	60A
Insulating Material	PA
Inflammability class acc. to UL94	V0
Nominal voltage, UL/CUL	600V
Nominal current, UL/CUL	60A

