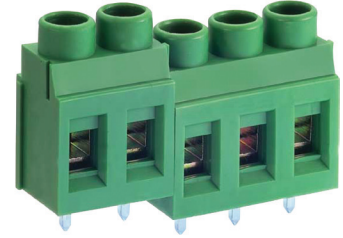
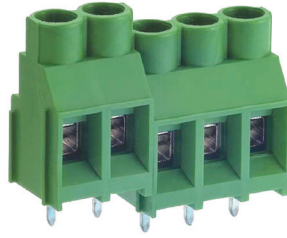
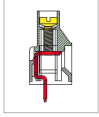


# MB912 PCB Terminal Block, Modular

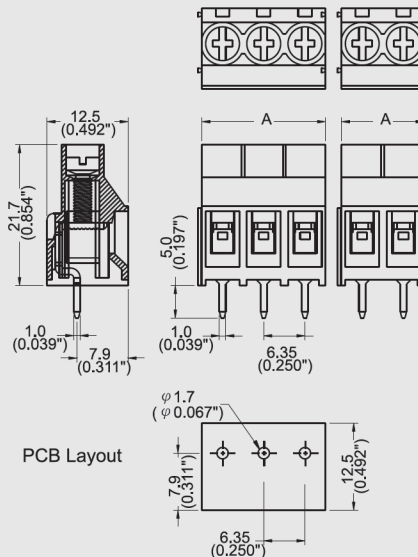


## DIMENSIONS/POSITIONS

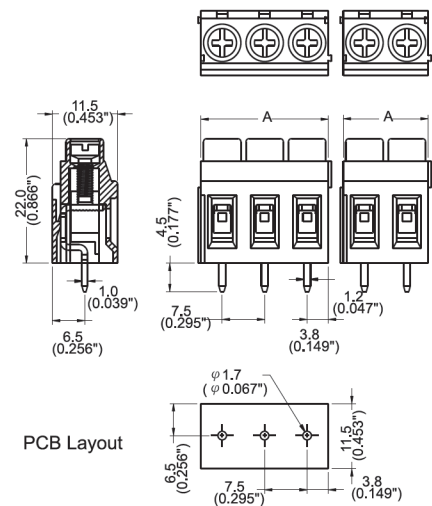
	MB912-635M	MB912-750M
Pitch	6.35mm	7.50mm
Poles	2 ~ 3Poles	2 ~ 3Poles
Dimension A	6.35mm	7.50mm
Length	A= 6.35xP(P≥2)	A= 7.50xP(P≥2)
Housing Material	PA 66	PA 66
Cage Clamp	Brass, Ni Plated	Brass, Ni Plated
Contact	Brass, Tin Plated	Brass, Tin Plated
Screw Thread	M3.0, Steel, Zinc Plated	M3.5, Steel, Zinc Plated
Wire Size	10 ~ 24AWG	10 ~ 24AWG
PCB Hole Diameter	1.7mm	1.7mm
Tightening Torque, Max.	5.5 Lb-in	5.5 Lb-in
Operating Temperature	-40°C to +105°C	-40°C to +105°C

## TECHNICAL DATA

Connection in acc. with standard EN-VDE		
Nominal Current I <sub>N</sub>	30A	30A
Nominal Cross Section	6.0mm <sup>2</sup>	6.0mm <sup>2</sup>
Maximum load current	30A	30A
Insulating Material	PA	PA
Inflammability class acc. to UL94	V0	V0
Nominal voltage, UL/CUL	300V	300V
Nominal current, UL/CUL	30A	30A



Note:  
 Screw Plating: Changes are available upon request  
 Cage Clamp: MB910: Steel



Note:  
 Screw Plating: Changes are available upon request  
 Cage Clamp: MB910: Steel