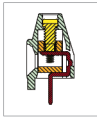
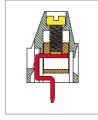


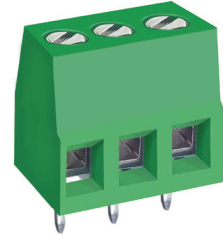
# MB312 PCB Terminal Block, Single Mold



MB312-254



MB312-500



## DIMENSIONS/POSITIONS

	MB312-254	MB312-500
Pitch	2.54mm	5.00mm
Poles	2 ~ 24Poles	2 ~ 24Poles
Dimension A	2.54mm	5.00mm
Length	A= 2.54 x P (P≥2)	A= 5.00xP(P≥2)
Housing Material	PA 66	PA 66
Cage Clamp	Brass, Ni Plated	Brass, Ni Plated
Contact	Brass, Tin Plated	Brass, Tin Plated
Screw Thread	M1.6, Steel, Zinc Plated	M2.6, Steel, Zinc Plated
Wire Size	20 ~ 26AWG	12 ~ 26AWG
PCB Hole Diameter	1.2mm	1.5mm
Tightening Torque, Max.	1.32 Lb-in	5.0 Lb-in
Operating Temperature	-40°C to +105°C	-40°C to +105°C

## TECHNICAL DATA

Connection in acc. with standard EN-VDE		
Nominal Current I <sub>N</sub>	6A	16A
Nominal Cross Section	2.5mm <sup>2</sup>	2.5mm <sup>2</sup>
Maximum load current	6A	16A
Insulating Material	PA	PA
Inflammability class acc. to UL94	V0	V0
Nominal voltage, UL/CUL	125V	300V
Nominal current, UL/CUL	6A	16A

