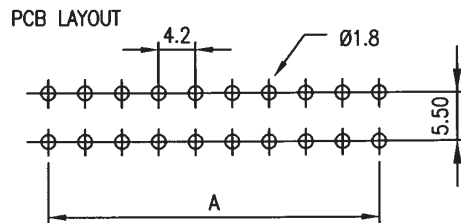
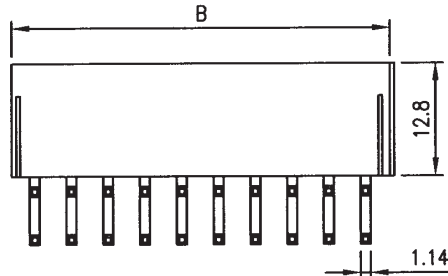
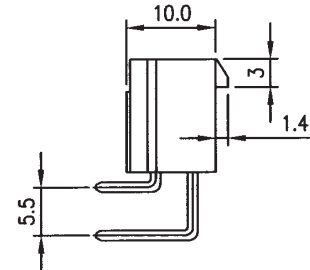
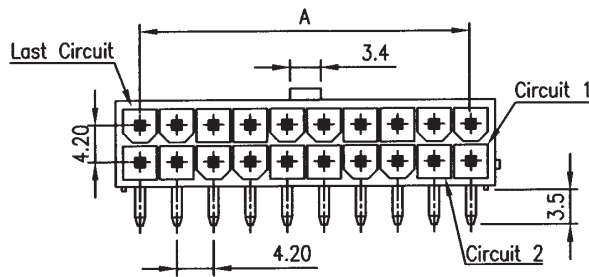
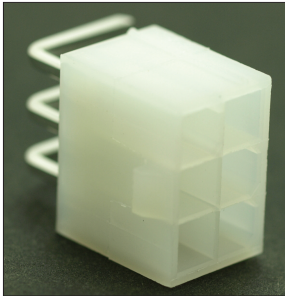


## 4.20mm Pitch Dual Row Right Angle Mount PCB 9 Amp Power Sockets - 5900-W-RT-xx Series

Dual row through hole types ~ 02 to 24 (2x12) positions  
Mates with Valcon 5700 series housings



Circuits	Dimension mm		Circuits	Dimension mm	
	A	B		A	B
2	--	5.4	14	25.2	30.6
4	4.2	9.6	16	29.4	34.8
6	8.4	13.8	18	33.6	39.0
8	12.6	18.0	20	37.8	43.2
10	16.8	22.2	22	42.0	47.4
12	21.0	26.4	24	46.2	51.6

### Ordering Information:

**5900- W-RT - xx**

**1**

#### Option 1(xx)

Number of contacts (in total)

**02(1x2)**

**04(2x2)**

**06(2x3)**

**08(2x4)**

**10(2x5)**

**12(2x6)**

**14(2x7)**

**16(2x8)**

**18(2x9)**

**20(2x10)**

**22(2x11)**

**24(2x12)**

Please note - some sizes may be subject to MOQ

### Specification:

Insulator Material:

White Nylon UL94V-2

Contact Material:

Brass

Contact Plating:

Tin

Current Rating:

9 Amps

Rated Voltage:

600V

DWV:

1500V AC for 1 minute

Contact Resistance:

10mΩ Max.

Insulation Resistance:

1000MΩ min.

Operating Temperature:

-40°C to +105°C

Tolerance:

±0.25mm

Complies with:

IEC 60695-2-12 glow-wire requirements  
& IEC 60695-2-11 750°C No flame

Mates with Valcon 5700 Series housings

Also available with PCB mounting pegs and screw flanges (special order)