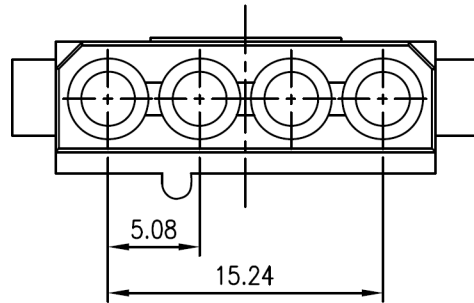




C US E182481



REV	DESCRIPTION	DATE
A1	EN011227-1	2012.12.27



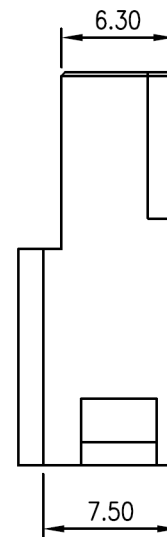
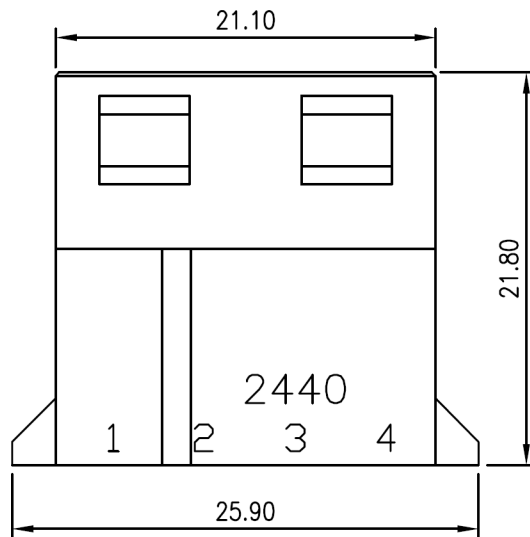
NOTES

Available in 04 Circuits
 Material: Nylon 66 UL94-V2
 Accepts 3100-T Crimp Terminal
 Mates with 3200M-H04 Series Housing
 3100-W04S or 3100-W04R Series Header
 Color: Nature

ORDERING INFORMATION

3100F - H 04
 $\frac{1}{2}$

1. H : Housing
2. No. of Circuits 04



TOLERANCE	
X.	--
X.X	±0.50
X.XX	±0.30
X.XXX	--
ANGULAR	--
APPROVALS	
DRAWN	Frank 27-December-2012
CHECKED	Kang 27-December-2012
APPROVED	Denise 27-December-2012

the **vital** component

TITLE
 5.08(.200") Pitch
 Wire to Wire Housing

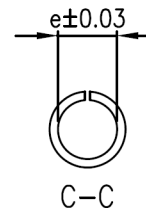
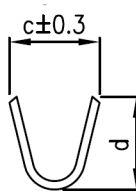
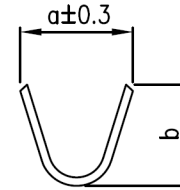
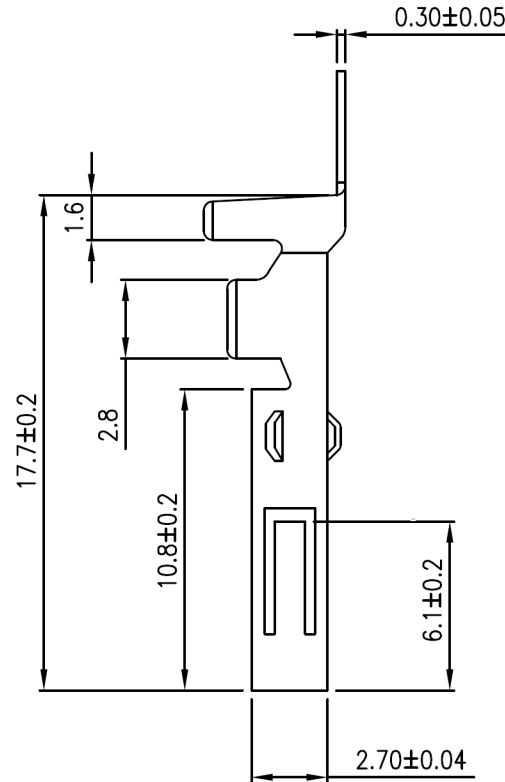
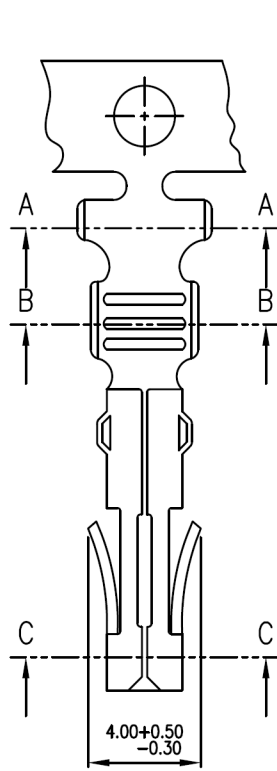
VIEW	SCALE	PART NO.	REV.
	F	3100F-H04	A1
UNIT	SIZE	DWG NO.	SHEET
MM	A4	3100F-H04	1 OF 1



C **UL** US E182481



REV	DESCRIPTION	DATE



NOTES

Used in 3100F-H Series Housing
 Material : Brass & Phosphor Bronze
 Finish : Tin-Plated
 Thickness: 0.30mm

ORDERING INFORMATION

3100 - T TA
 1 2

- 1. T : Terminal
- 2. TA : Tin , Pre-tinned

Wire Range	Wire Range						Insulation O.D.(mm)	Qty/reel
	a	b	c	d	e			
					Brass	Phos.Bronze		
AWG #18~20	3.8	3.3	2.3	2.3	2.00	2.02	2.55~2.8	7,000PCS

TOLERANCE	
X.	--
X.X	±0.25
X.XX	±0.13
X.XXX	±0.08
ANGULAR	--

the **vital** component

TITLE 5.08mm(.200") Pitch
 Wire to Wire Terminal

APPROVALS		VIEW	SCALE	PART NO.	REV.
DRAWN	Frank		F	3100-TTA	A0
CHECKED	Denise				
APPROVED	Jessica	UNIT	SIZE	DWG NO.	SHEET
		MM	A4	3100-TTA	1 OF 1

