



## DC POWER CONNECTORS: KLDX-SMT Series

Surface Mount Mini DC Power Jack

### Product Features

1.0mm and 1.3mm  
Built-In DC On/Off Switch  
Laptop and Palm Computer, Portable Modems, Radar Detectors, and Other Portable Device Applications  
High Temperature Material For Reflow Compatibility  
Packaged in Tape & Reel for Automated Assembly  
CSA/NRTL Certified File No. LR78160  
UL File No. E140125

### Performance Specifications

#### Materials and Finish

**Plastic Housing:** High Temperature Thermoplastic, UL94V-0 Rated, Black Color

**Center Pin:** Copper Alloy, Nickel Plated

**Contacts:** Copper Alloy, Silver Plated

### Electrical Characteristics

#### Contact Resistance

#### Before Durability Test

**Between Terminals:** 30 milliohms Max.

**Plug to Contacts:** 50 milliohms Max.

#### After Durability Test

**Between Terminals:** 60 milliohms Max.

**Plug to Contacts:** 100 milliohms Max.

**Rated Voltage:** 24V DC

**Rated Current:** 3.0A

**Insulation Resistance:** 100 Megohms Min.

**Dielectric Withstanding Voltage:**

500V AC RMS for 1 Minute

### Mechanical Characteristics

**Durability Test:** 5000 Cycles

**Insertion Force:** 0.3kg - 2.0kg

**Extraction Force:** 0.3kg - 2.0kg

**Operating Temperature:** -25°C to +85°C



Generated Part Number

KLDX-SMT-0201L-ATR

Part Number Builder

KLDX-SMT-0201L

Series

A

Diameter

TR

Packaging  
Option

#### Series

KLDX-SMT-0201L - Surface Mount Mini DC Power Jack

#### Diameter

A - 1.0mm Center Pin Diameter

B - 1.3mm Center Pin Diameter

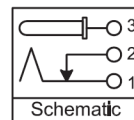
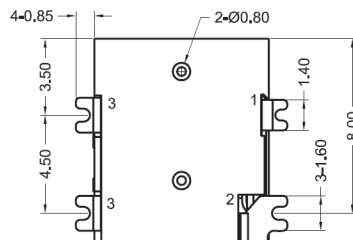
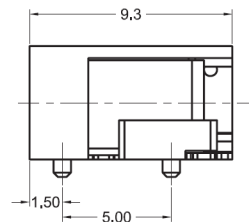
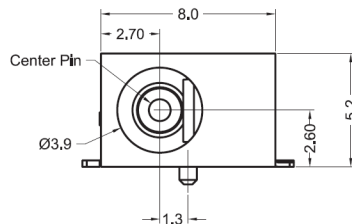
#### Packaging Option

TR - Tape and Reel

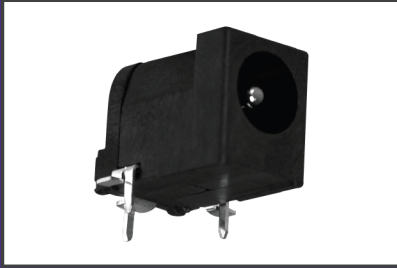
Contact Kycon for Other Options

### KLDX-SMT-0201L

Dimensions in mm



Schematic



## DC POWER CONNECTORS: KLDX-SMT Series

### Hybrid DC Power Jack

#### Product Features

2.0mm and 2.5mm  
Built-In DC On/Off Switch  
Laptop and Palm Computer, Portable Modems, Radar Detectors, and Other Portable Device Applications  
High Temperature Material For Reflow Compatibility  
Packaged in Tubes for Automated Assembly  
Optional Center Peg Available  
CSA/NRTL Certified File No. LR78160  
UL File No. E140125

#### Performance Specifications

##### Materials and Finish

**Plastic Housing:** High Temperature Thermoplastic, UL 94V-0 Rated, Black Color  
**Center Pin:** Copper Alloy, Nickel Plated  
**Contact #1: and #3:** Brass, Silver Plated  
**Contact #2:** Phosphor Bronze, Silver Plated

#### Electrical Characteristics

##### Contact Resistance

##### Before Durability Test

**Between Terminals:** 30 milliohms Max.

**Plug to Contacts:** 50 milliohms Max.

##### After Durability Test

**Between Terminals:** 60 milliohms Max.

**Plug to Contacts:** 100 milliohms Max.

**Rated Voltage:** 24V DC

**Rated Current:** 3.5A

**Insulation Resistance:** 100 Megohms Min. at 500V DC

**Dielectric Withstanding Voltage:**

500V AC RMS for 1 Minute

#### Mechanical Characteristics

**Durability Test:** 5000 Cycles

**Insertion Force:** 0.3kg - 2.0kg

**Extraction Force:** 0.3kg - 2.0kg

**Operating Temperature:** -25°C to +85°C



Generated Part Number

KLDX-SMT-0202-AP

Part Number Builder

KLDX-SMT-0202	-	A	P	
Series		Diameter	Peg Option	Packaging Option

#### Series

KLDX-SMT-0202 - Hybrid Mount DC Power Jack

#### Diameter

A - 2.0mm Center Pin Diameter  
B - 2.5mm Center Pin Diameter

#### Center Peg Option

Blank - No Peg  
P - With Peg

#### Packaging Option

Blank - Bulk  
TR - Tape and Reel

Contact Kycon for Other Options

#### KLDX-SMT Series

Dimensions in mm

