

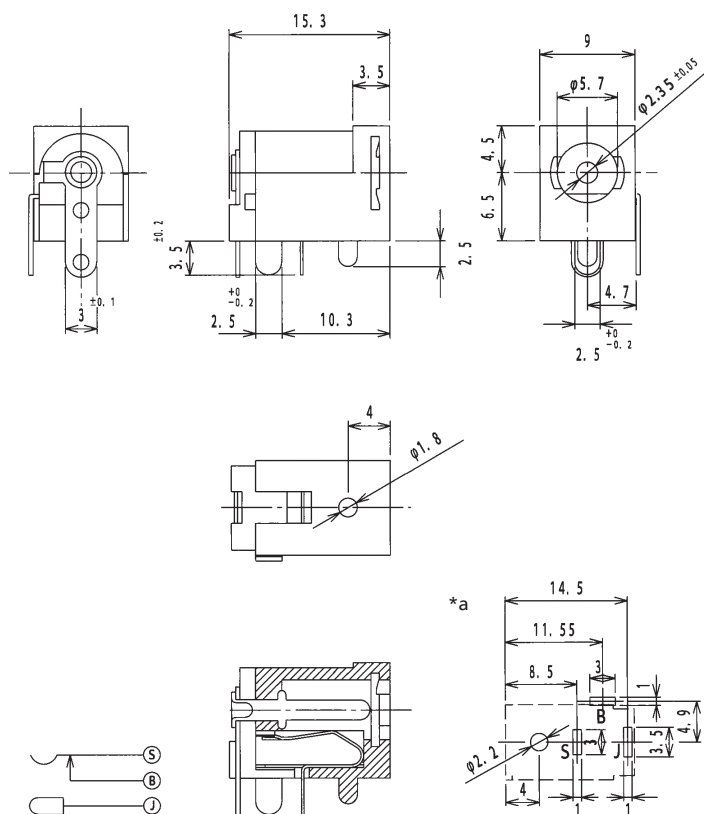
## Power supply connectors



Power supply chassis socket, angular version, with bayonet lock, with break contact, for printed circuit boards

16

1613 23



#### Environmental conditions

Temperature range -20 °C/+70 °C

#### Materials

Insulating body PC, V-2 according to UL94  
Contact Cu alloy, nickel-plated/tin-plated

#### Mechanical data

Diameter opening 5.7 mm  
Diameter center pin 2.35 mm  
Mating cycles  $\geq 5000$   
Insertion force 5–20 N  
Withdrawal force 4–15 N

#### Electrical data (at $T_{amb}$ 20 °C)

Contact resistance  $\leq 30$  m $\Omega$   
Rated current 1 A  
Rated voltage 12 V DC  
Rated impulse voltage 500 V/60 s  
Insulation resistance  $\geq 100$  M $\Omega$

#### Associated products

Counterparts  
☑ 1634 01

\*a printed circuit board layout, solder side view

16

1613 23

Designation	Pole Number	PU (Pieces)	MDQ (Pieces)
1613 23	2	250	500

**Packaging:**

in bulk, in a cardboard box or a plastic bag