

A28 MINI-SIZE CONNECTOR (MALE ON WIRE TYPE)

PITCH: 2.54mm * 1.5mm

SPECIFICATIONS

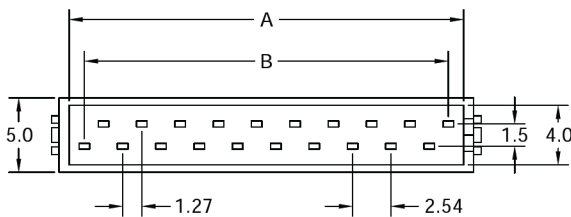
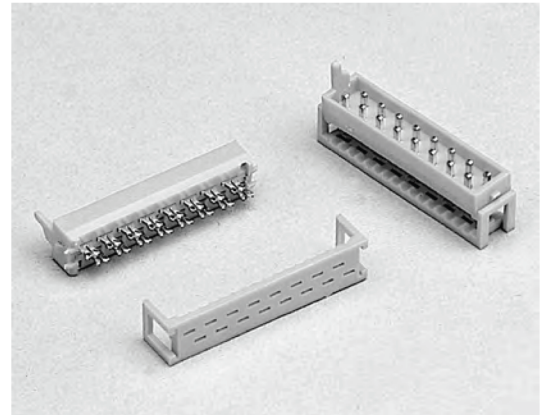
Material

Insulator : PBT, glass reinforced, rated UL 94V-0
 Contact : Phosphor Bronze

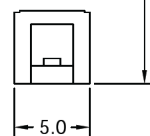
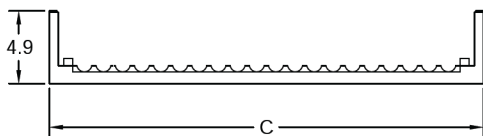
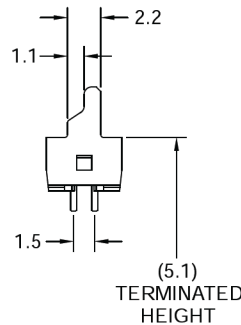
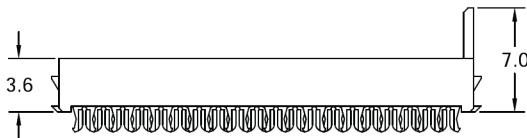
Electrical

Current Rating : 1 Amp
 Contact Resistance : 30 mΩ max.
 Insulation Resistance : 3000 MΩ min.
 Dielectric Withstanding Voltage : 500V AC for 1minute
 Operating Temperature : -40°C to +105°C

- ▶ Terminated with L01-1.27mm pitch flat ribbon cable.
- ▶ Mating Suggestion : A28b, A28c & A28d series.



POSITION	A	B	C
4	5.84	3.81	8.46
6	8.38	6.35	11.00
8	10.92	8.89	13.54
10	13.46	11.43	16.08
12	16.00	13.97	18.62
14	18.54	16.51	21.16
16	21.08	19.05	23.70
18	23.62	21.59	26.24
20	26.16	24.13	28.78
22	28.70	26.67	31.32
24	31.24	29.21	33.86
26	33.78	31.75	36.40



How to order: A28 - 1 - 2 - 3 - 4 - G(RoHS)

1.NO. OF CONTACT	2.CONTACT MATERIAL	3.CONTACT PLATING	4.INSULATOR COLOR
04 06 08 10 12 14 16 18 20 22 24 26	B: PHOSPHOR BRONZE	T: TIN PLATED S: SELECTIVE G: GOLD FLASH A: 5u" INCH GOLD B: 10u" INCH GOLD C: 15u" INCH GOLD D: 30u" INCH GOLD	6. RED 

L01 FLAT RIBBON CABLE

PITCH: 1.27mm

SPECIFICATIONS

UL File No. : E162690

UL Style : 2651

Operating Temperature : -20°C to +105°C

Flammability Rating : UL-VW-1

Voltage Rating : 300V

Physical

Insulation Material : Polyvinyl Chloride (PVC)

Conductor : #28AWG (7*0.127) Stranded Tinned Copper
 #26AWG (7*0.16) Stranded Tinned Copper

Color : Grey With Red Edge

Electrical

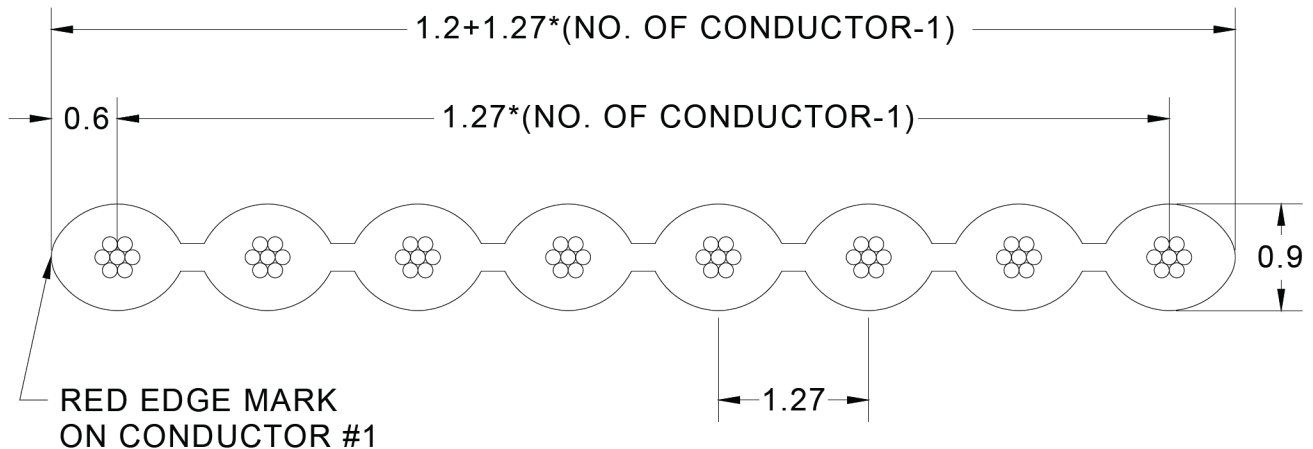
Impedance : 115Ω (Unbalanced)

Capacitance : 12.2 pF/ft.

Inductance : .14uH/ft.

Propagation Delay : 1.4 ns/ft.

Insulation Resistance : 1GΩ/M min.



How to order: L01 - 1 - 2 - 3 - 4 - G(RoHS)

1.NO. OF CONDUCTOR	2.INSULATION MATERIAL	3.WIRE SIZE	4.CABLE LENGTH / UNIT
06 TO 64	P: PVC	A: 28 AWG	F: FEET 