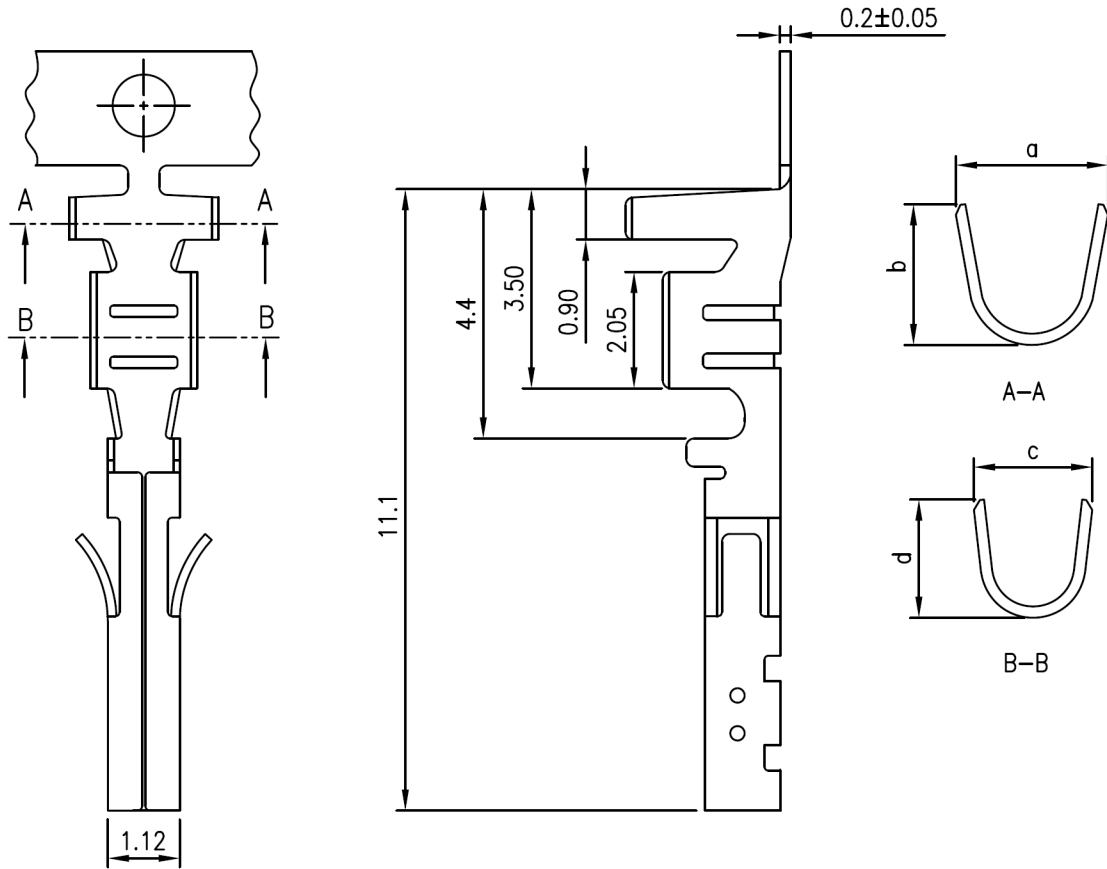




CULUS E182481



REV	DESCRIPTION	DATE
A1	EN000629-1	2011.06.29



NOTES

Used in 5750-H Series Housing
 Material : Phosphor Bronze
 Finish : Tin-Plated or Gold-Plated
 Thickness: 0.2mm

ORDERING INFORMATION

5750 -T TA P - L

1 2 3

1. T : Terminal
2. TA : Tin , Pre-tinned
3. Material
P : Phosphor Bronze

L = Loose Bulk Pack



TOLERANCE	
X.	--
X.X	±0.25
X.XX	±0.15
X.XXX	±0.05
ANGULAR	--

the **vital** component

TITLE
 3.0mm(.118") Pitch
 Wire to Wire Terminal

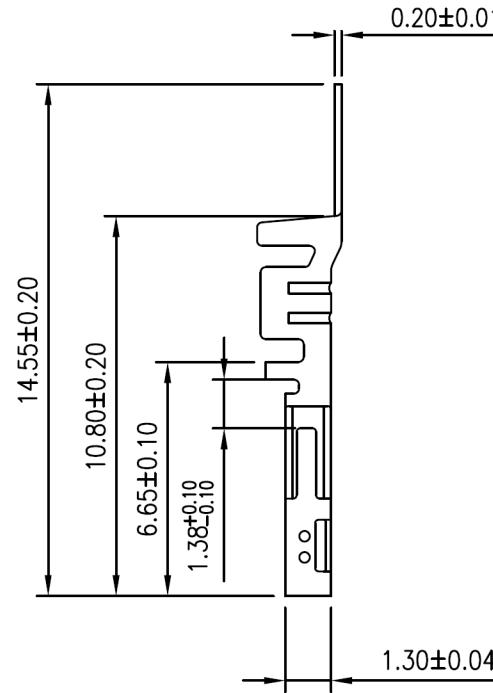
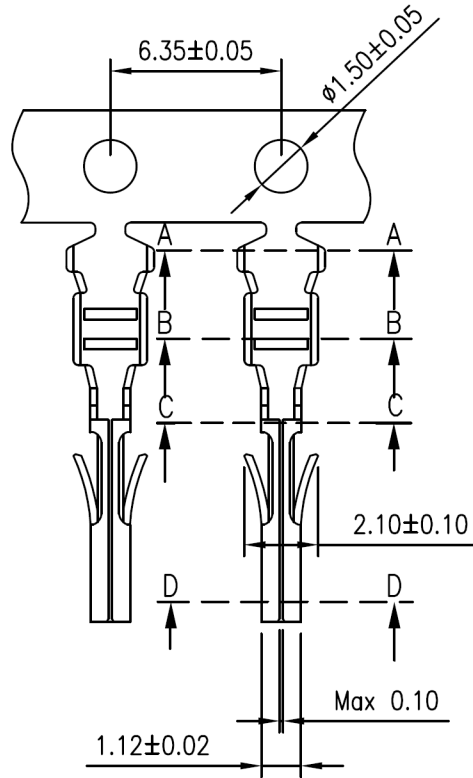
APPROVALS		VIEW	SCALE	PART NO.	REV.
DRAWN	Frank		F	5750-T**P*	A1
CHECKED	Denise				
APPROVED	Jessica	UNIT	SIZE	DWG NO.	SHEET
		MM	A4	5750-T**P*	1 OF 1



C **UL** US E182481



REV	DESCRIPTION	DATE
A1	EN990305-1	2010.03.05
A2	EN201408180001	2014.08.18



NOTES

Used in 5750-H Series Housing
 Accepts AWG #20~24 Wire Range
 Insulation O.D.= 1.75 mm(max)
 Material : Phosphor Bronze or Brass
 Finish : Tin-Plated
 Qty/reel: 10,000 PCS
 Thickness: 0.2mm

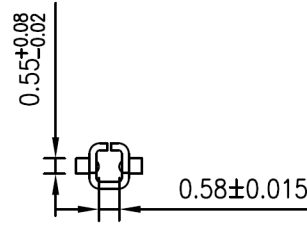
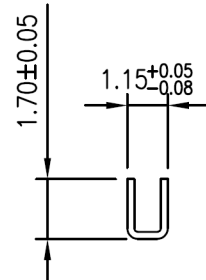
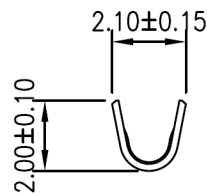
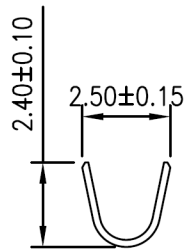
ORDERING INFORMATION

5750 - T ** *
 1 2 3

1. T : Terminal
2. TB : Tin , Stamping before Plated

3. Material

P : Phosphor bronze



A-A

B-B

C-C

D-D

TOLERANCE	
X.	--
X.X	±0.15
X.XX	±0.10
X.XXX	±0.05
ANGULAR	--

the **vital** component

TITLE
 3.0mm(.118") Pitch
 Wire to Board Terminal

APPROVALS		VIEW	SCALE	PART NO.	REV.
DRAWN	JC		F	5750-T***	A2
CHECKED	Denise				
APPROVED	Jessica	UNIT	SIZE	DWG NO.	SHEET
	18-August-2014	MM	A4	5750-T***	1 OF 1