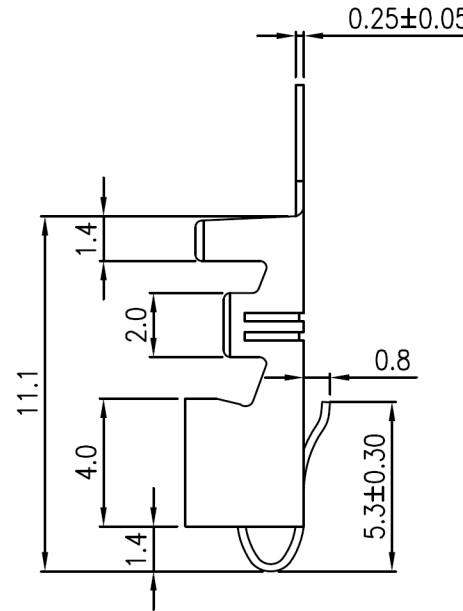
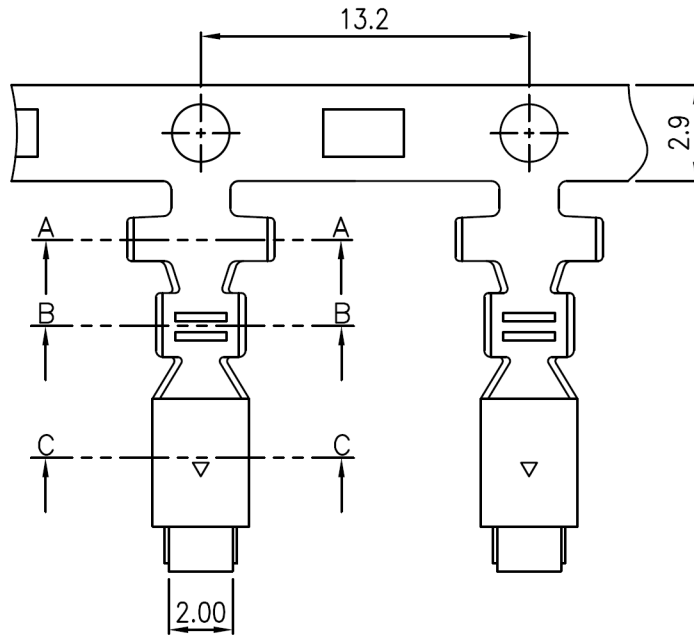




CULUS E182481



REV	DESCRIPTION	DATE
A1	EN980522-1	2009.05.22



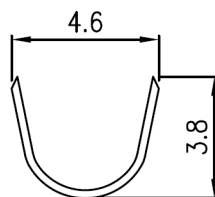
NOTES

Used in VH396-xxH Series Housing
 Accepts AWG #18~22 Wire Range
 Insulation O.D.= 2.80 mm(max)
 Material : Brass
 Finish : Tin-Plated
 Qty/Reel : 4,000 PCS
 Thickness: 0.25mm

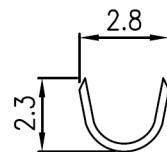
ORDERING INFORMATION

VH396T-L = Loose Crimp
 (No MOQ)

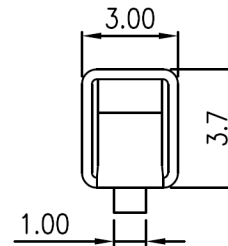
VH396T-010 = Reeled Crimp
 (4000 crimps per reel MOQ)



A-A



B-B



C-C



THE VITAL COMPONENT

TOLERANCE	
X.	--
X.X	±0.25
X.XX	±0.15
X.XXX	±0.05
ANGULAR	--

the vital component

TITLE
 3.96mm(.156") Pitch
 Wire to Board Terminal

APPROVALS		VIEW	SCALE	PART NO.	REV.
DRAWN	Frank		F	VH396-xxx	A1
CHECKED	Denise				
APPROVED	Jessica	UNIT	SIZE	DWG NO.	SHEET
		MM	A4	VH396-xxx	1 OF 1