

C06c LOW PROFILE SHROUDED HEADER SMT

PITCH: 2.0mm * 2.0mm

SPECIFICATIONS

Material

Insulator : LCP, glass reinforced, rated UL 94V-0

Contact : Brass

Electrical

Current Rating : 1 Amp

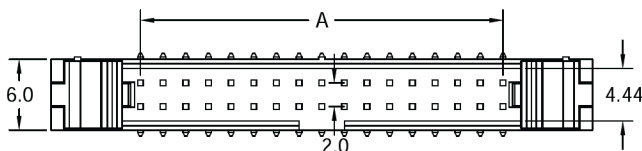
Contact Resistance : 30 mΩ max.

Insulation Resistance : 3000 MΩ min.

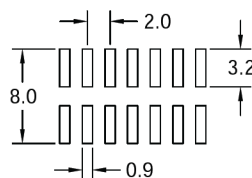
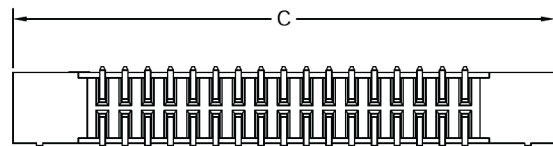
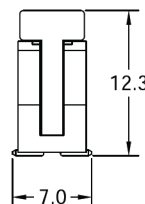
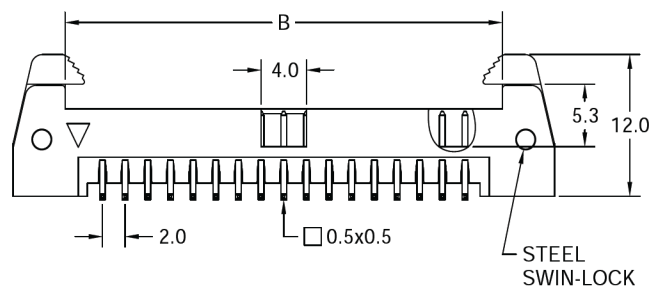
Dielectric Withstanding Voltage : 500V AC for 1minute

Operating Temperature : -40°C to +105°C

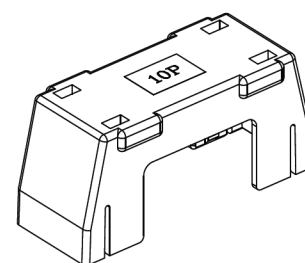
► Mating Suggestion : A05b series.



POSITION	A	B	C
10	8.0	14.6	23.8
12	10.0	16.6	25.8
14	12.0	18.6	27.8
16	14.0	20.6	29.8
20	18.0	24.6	33.8
22	20.0	26.6	35.8
24	22.0	28.6	37.8
26	24.0	30.6	39.8
30	28.0	34.6	43.8
34	32.0	38.6	47.8
40	38.0	44.6	53.8
44	42.0	48.6	57.8
50	48.0	54.6	63.8



RECOMMENDED P.C.B LAYOUT



EJECTOR LATCH CAP (AVAILABLE)

How to order: C06c - 1 - 2 - 3 - 4 - 5 - G(RoHS)

1.NO. OF CONTACT	2.CONTACT MATERIAL	3.CONTACT PLATING	4.PACKAGING	5.INSULATOR COLOR
10 12 14 16 20 22 24 26 30 34 40 44 50	A: BRASS	T: TIN PLATED S: SELECTIVE G: GOLD FLASH A: 5u" INCH GOLD B: 10u" INCH GOLD C: 15u" INCH GOLD D: 30u" INCH GOLD	A: TUBE WITH PAD B: TUBE W/O PAD C: TAPE & REEL WITH PAD	1. BLACK 