



C05a SHROUDED HEADER STR

PITCH: 2.0mm * 2.0mm

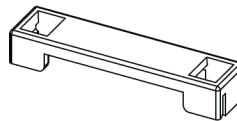
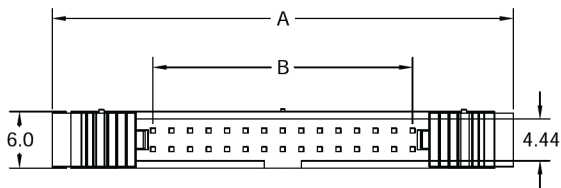
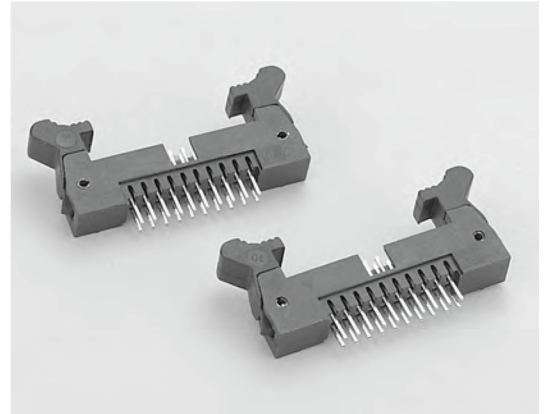
SPECIFICATIONS

Material

Insulator : Nylon 66, glass reinforced, rated UL 94V-0
Contact : Brass

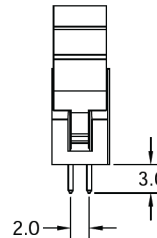
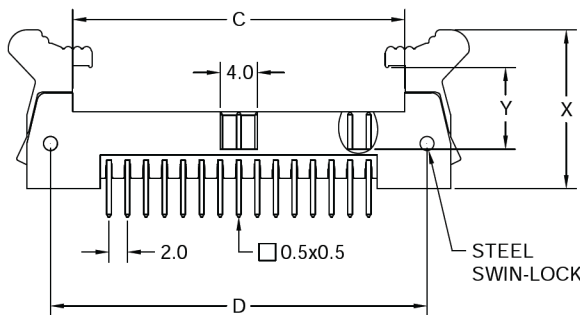
Electrical

Current Rating : 1 Amp
Contact Resistance : 30 mΩ max.
Insulation Resistance : 3000 MΩ min.
Dielectric Withstanding Voltage : 500V AC for 1minute
Operating Temperature : -40°C to +105°C
▶ Mating Suggestion : A05, A05g & A58 series.

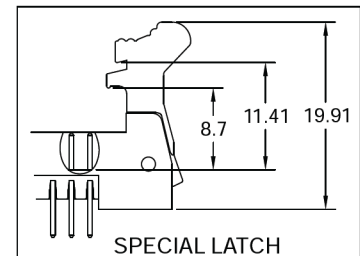
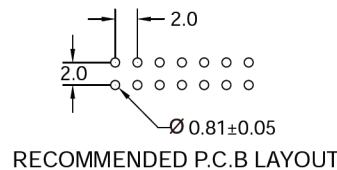
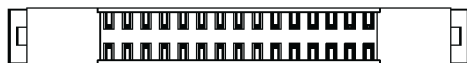


EJECTOR LATCH CAP
(AVAILABLE)

POSITION	A	B	C	D
6	25.5	4.0	11.8	16.6
8	27.5	6.0	13.8	18.6
10	29.5	8.0	15.8	20.6
12	31.5	10.0	17.8	22.6
14	33.5	12.0	19.8	24.6
16	35.5	14.0	21.8	26.6
20	39.5	18.0	25.8	30.6
22	41.5	20.0	27.8	32.6
24	43.5	22.0	29.8	34.6
26	45.5	24.0	31.8	36.6
30	49.5	28.0	35.8	40.6
34	53.5	32.0	39.8	44.6
40	59.5	38.0	45.8	50.6
44	63.5	42.0	49.8	54.6
50	69.5	48.0	55.8	60.6
68	87.5	66.0	73.8	78.6



ACCESSORIES	X	Y
LONG LATCH	19.9	11.4
SHORT LATCH	16.9	8.7



How to order: C05a - 1 - 2 - 3 - 4 - 5 - G(RoHS)

1.NO. OF CONTACT	2.CONTACT MATERIAL	3.CONTACT PLATING	4.ACCESSORIES	5.INSULATOR COLOR
06 08 10 12 14 16 20 22 24 26 30 34 40 44 50 68	A: BRASS	T: TIN PLATED S: SELECTIVE G: GOLD FLASH A: 5u" INCH GOLD B: 10u" INCH GOLD C: 15u" INCH GOLD D: 30u" INCH GOLD	A: LONG LATCH B: SHORT LATCH C:SPECIAL LATCH	1. BLACK THE VITAL COMPONENT