



# B27c FEMALE HEADER SMT (H: 7.1mm)

**PITCH: 2.54mm \* 2.54mm**

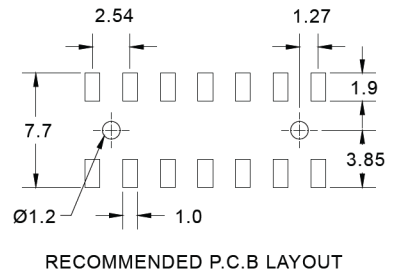
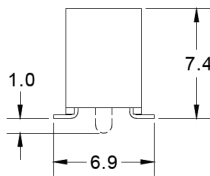
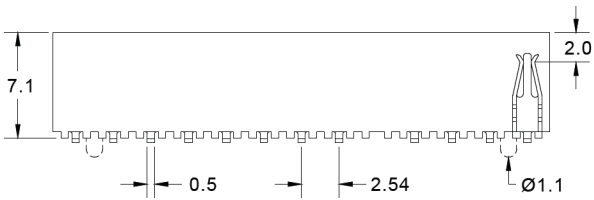
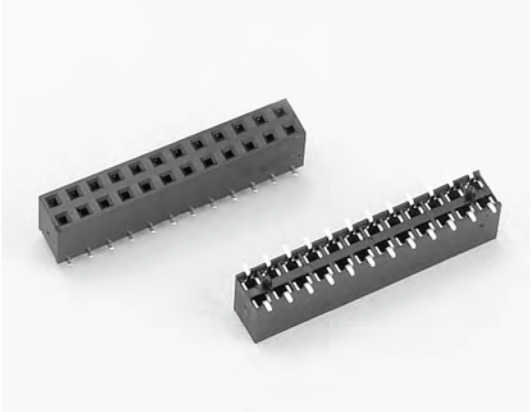
## SPECIFICATIONS

### Material

Insulator : LCP, glass reinforced, rated UL 94V-0  
Contact : Phosphor Bronze

### Electrical

Current Rating : 1 Amp  
Contact Resistance : 30 mΩ max.  
Insulation Resistance : 3000 MΩ min.  
Dielectric Withstanding Voltage : 500V AC for 1minute  
Operating Temperature : -40°C to +105°C  
▶ Mating Suggestion : C17, C18, C20 & C25 series.



**How to order:** B27c - 1 - 2 - 3 - 4 - 5 - 6 - G(RoHS)

| 1.NO. OF CONTACT       | 2.CONTACT MATERIAL | 3.CONTACT PLATING   | 4.SPECIAL FUNCTION                          | 5.PACKAGING  | 6.INSULATOR COLOR |
|------------------------|--------------------|---|---|--|-------------------|
| DUAL ROW<br>2*2 - 2*40 | B: PHOSPHOR BRONZE | T: TIN PLATED<br>S: SELECTIVE<br>G: GOLD FLASH<br>A: 5u" INCH GOLD<br>B: 10u" INCH GOLD<br>C: 15u" INCH GOLD<br>D: 30u" INCH GOLD | A: WITH LOCATING PEG<br>B: W/O LOCATING PEG | A: TUBE WITH PAD<br>B: TUBE W/O PAD<br>C: TAPE & REEL WITH PAD | 1. BLACK<br><br>  |