



C03f ELEVATED SHRUNK BOX HEADER STR

PITCH: 2.54mm * 2.54mm

SPECIFICATIONS

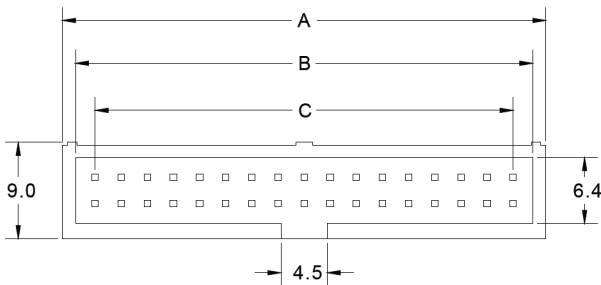
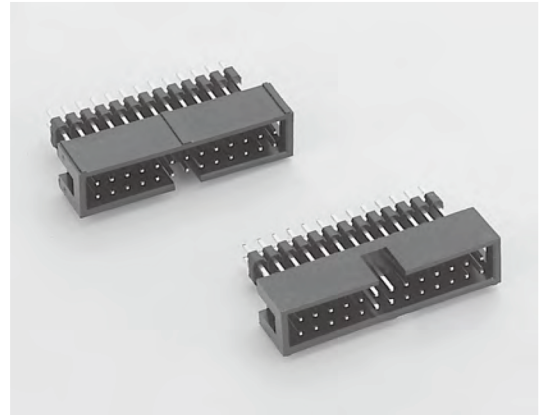
Material

Insulator : PBT, glass reinforced, rated UL 94V-0
Contact : Phosphor Bronze or Brass

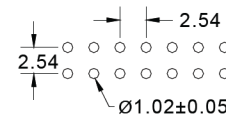
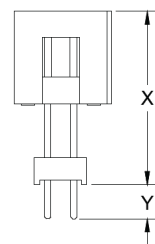
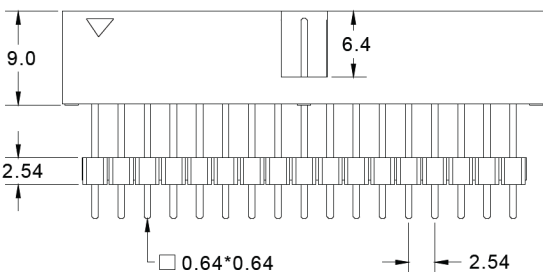
Electrical

Current Rating : 2 Amp
Contact Resistance : 30 mΩ max.
Insulation Resistance : 3000 MΩ min.
Dielectric Withstanding Voltage : 500V AC for 1minute
Operating Temperature : -40°C to +105°C

► Mating Suggestion : B06d, B06e, B06f, B07a, B22b, B27e & B27f series.



POSITION	A	B	C
6	11.43	8.89	5.08
8	13.97	11.43	7.62
10	16.51	13.97	10.16
12	19.05	16.51	12.70
14	21.59	19.05	15.24
16	24.13	21.59	17.78
20	29.21	26.67	22.86
24	34.29	31.75	27.94
26	36.83	34.29	30.48
30	41.91	39.37	35.56
34	46.99	44.45	40.64
40	54.61	52.07	48.26
44	59.69	57.15	53.34
50	67.31	64.77	60.96
60	80.01	77.47	73.66
64	85.09	82.55	78.74



RECOMMENDED P.C.B LAYOUT

How to order: C03f - 1 - 2 - 3 - 4 - 5 - G(RoHS)

1.NO. OF CONTACT	2.CONTACT MATERIAL	3.CONTACT PLATING	4.INSULATOR COLOR	5.LEAD STYLE
06 08 10 12 14 16 20 24 26 30 34 40 44 50 60 64	A: BRASS B: PHOSPHOR BRONZE	T: TIN PLATED S: SELECTIVE G: GOLD FLASH A: 5u" INCH GOLD B: 10u" INCH GOLD C: 15u" INCH GOLD D: 30u" INCH GOLD	1. BLACK	X / Y 