



B31 FEMALE HEADER STR (H: 6.35mm)

PITCH: 2.0mm * 2.0mm

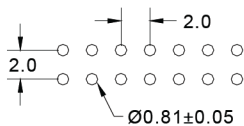
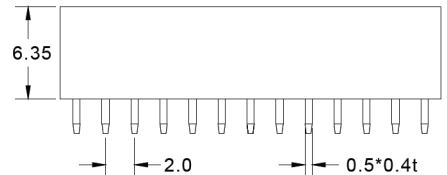
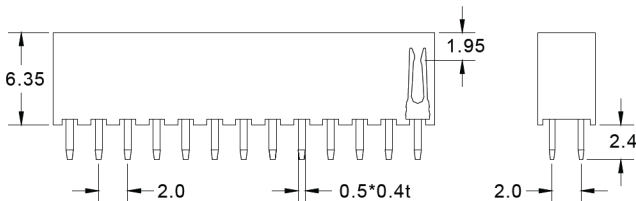
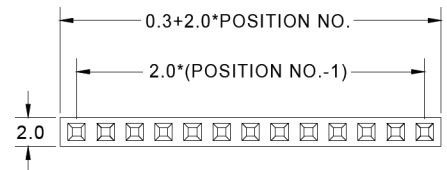
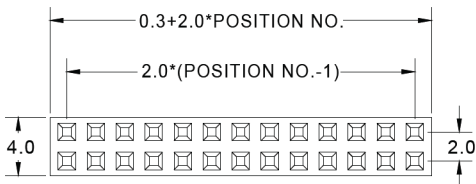
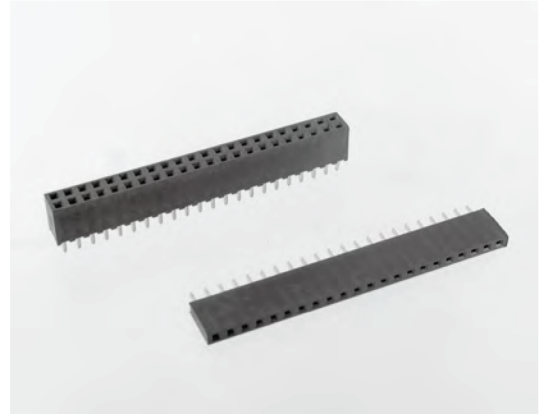
SPECIFICATIONS

Material

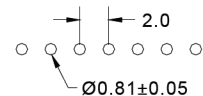
Insulator : LCP, glass reinforced, rated UL 94V-0
Contact : Phosphor Bronze

Electrical

Current Rating : 1 Amp
Contact Resistance : 30 mΩ max.
Insulation Resistance : 1000 MΩ min.
Dielectric Withstanding Voltage : 500V AC for 1minute
Operating Temperature : -40°C to +105°C
▶ Mating Suggestion : C27, C28, C29 & C30 series.



RECOMMEND P.C.B. LAYOUT



RECOMMEND P.C.B. LAYOUT

How to order: B31 - 1 - 2 - 3 - 4 - G(RoHS)

1.NO. OF CONTACT	2.CONTACT MATERIAL	3.CONTACT PLATING	4.INSULATOR COLOR
SINGLE ROW 1*2 - 1*40 DUAL ROW 2*2 - 2*40	B: PHOSPHOR BRONZE	T: TIN PLATED S: SELECTIVE G: GOLD FLASH A: 5u" INCH GOLD B: 10u" INCH GOLD C: 15u" INCH GOLD D: 30u" INCH GOLD	1. BLACK THE VITAL COMPONENT