

B13b FEMALE HEADER SMT PROFILE: 4.5mm



PITCH: 2.0mm & 2.0mm * 2.0mm

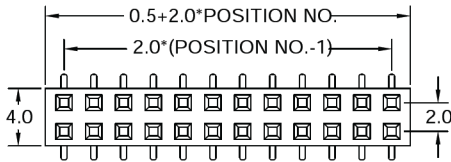
SPECIFICATIONS

Material

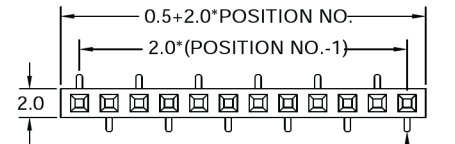
Insulator : LCP, glass reinforced, rated UL 94V-0
 Contact : Phosphor Bronze

Electrical

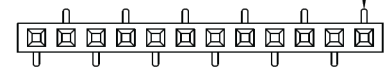
Current Rating : 1 Amp
 Contact Resistance : 30 mΩ max.
 Insulation Resistance : 3000 MΩ min.
 Dielectric Withstanding Voltage : 500V AC for 1minute
 Operating Temperature : -40°C to +105°C
 ► Mating Suggestion : C27, C28, C29 & C30 series.



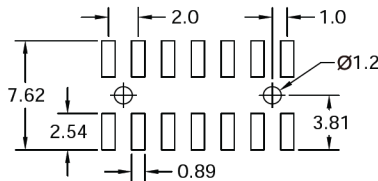
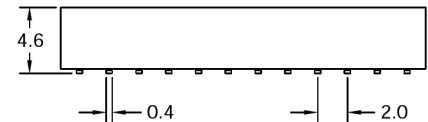
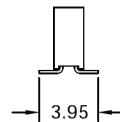
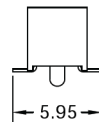
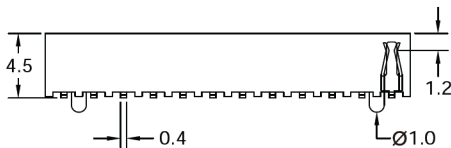
(TYPE A)



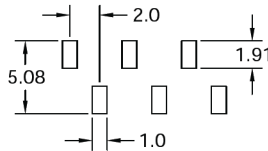
(TYPE B1)



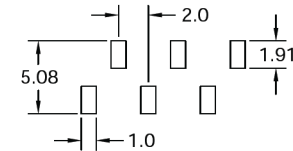
(TYPE B2)



(TYPE A)
RECOMMENDED.P.C.B.LAYOUT



(TYPE B1)
RECOMMENDED.P.C.B.LAYOUT



(TYPE B2)
RECOMMENDED.P.C.B.LAYOUT

How to order: B13b - 1 - 2 - 3 - 4 - 5 - 6 - 7 - G(RoHS)

1.NO. OF CONTACT		2.CONTACT MATERIAL		3.CONTACT PLATING	
SINGLE ROW : 1*2 - 1*40 DUAL ROW : 2*2 - 2*40		B: PHOSPHOR BRONZE		T: TIN PLATED S: SELECTIVE G: GOLD FLASH	
4.FOOT RANK TYPE	5.SPECIAL FUNCTION	6.PACKAGING	7. INSULATOR COLOR	A: 5u" INCH GOLD B: 10u" INCH GOLD C: 15u" INCH GOLD D: 30u" INCH GOLD	
A: TYPE A B: TYPE B1 C: TYPE B2	A: WITH LOCATING PEG B: W/O LOCATING PEG	A:TUBE WITH PAD B: TUBE W/O PAD C: TAPE & REEL WITH PAD	1. BLACK 		