

C05c ELEVATED BOX HEADER STR

PITCH: 2.0mm * 2.0mm

SPECIFICATIONS

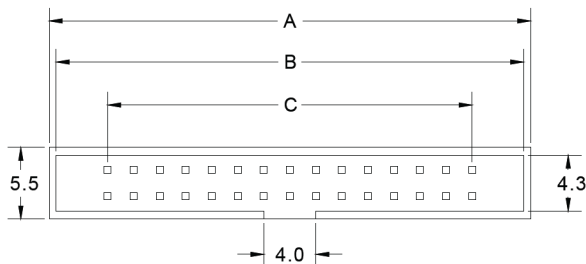
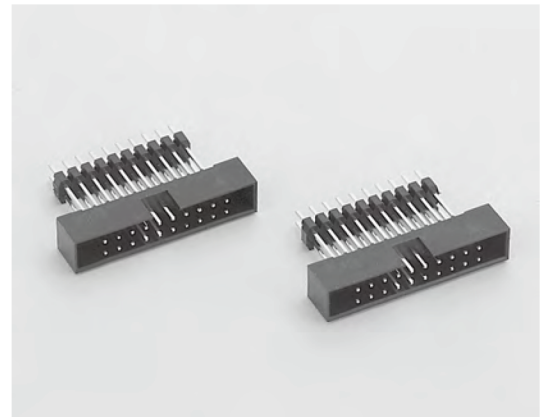
Material

Insulator : LCP, glass reinforced, rated UL 94V-0
 Contact : Phosphor Bronze or Brass

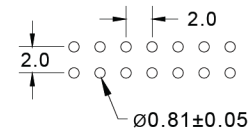
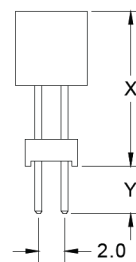
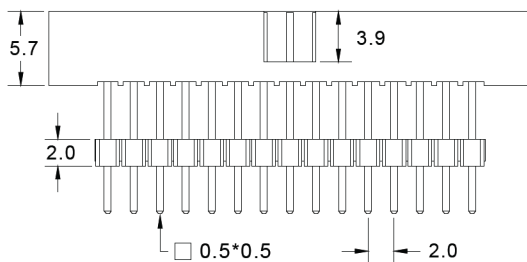
Electrical

Current Rating : 1 Amp
 Contact Resistance : 30 mΩ max.
 Insulation Resistance : 3000 MΩ min.
 Dielectric Withstanding Voltage : 500V AC for 1minute
 Operating Temperature : -40°C to +105°C

► Mating Suggestion : A05, A05a & A05g series.




POSITION	A	B	C
6	13.10	12.10	4.00
8	15.10	14.10	6.00
10	17.10	16.10	8.00
12	19.10	18.10	10.00
14	21.10	20.10	12.00
16	23.10	22.10	14.00
20	27.10	26.10	18.00
22	29.10	28.10	20.00
24	31.10	30.10	22.00
26	33.10	32.10	24.00
30	37.10	36.10	28.00
34	41.10	40.10	32.00
36	43.10	42.10	34.00
40	47.10	46.10	38.00
44	51.10	50.10	42.00
50	57.10	56.10	48.00
68	75.10	74.10	66.00



RECOMMENDED P.C.B LAYOUT

How to order: C05c - 1 - 2 - 3 - 4 - 5 - G(RoHS)

1.NO. OF CONTACT	2.CONTACT MATERIAL	3.CONTACT PLATING	4.INSULATOR COLOR	5.LEAD STYLE
06 08 10 12 14 16 20 22 24 26 30 34 36 40 44 50 68	A: BRASS B: PHOSPHOR BRONZE	T: TIN PLATED S: SELECTIVE G: GOLD FLASH A: 5u" INCH GOLD B: 10u" INCH GOLD C: 15u" INCH GOLD D: 30u" INCH GOLD	1. BLACK	X/Y  THE VITAL COMPONENT