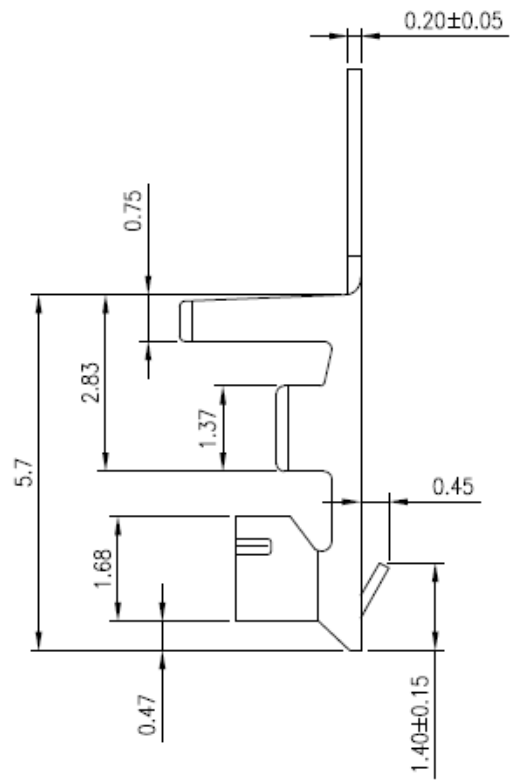
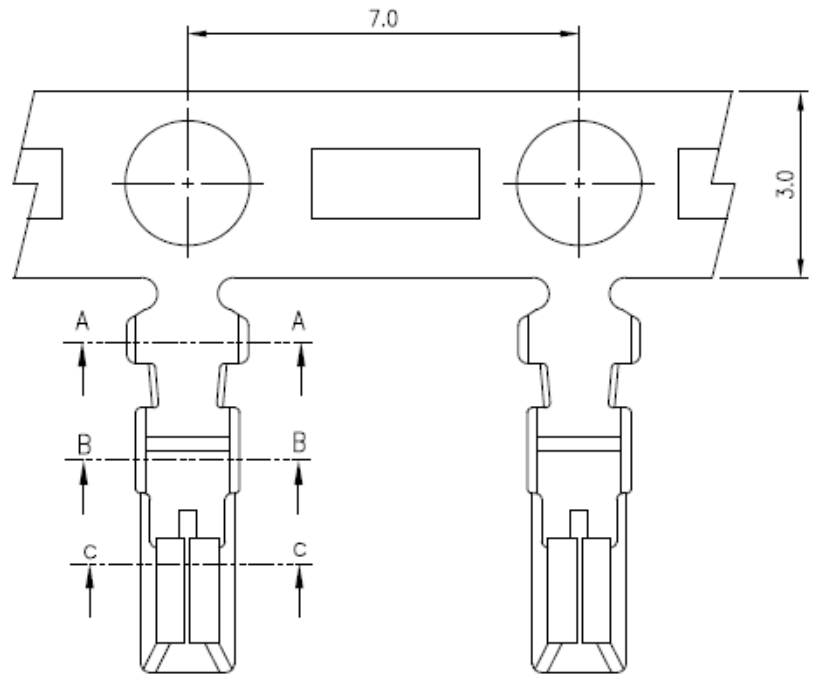




CULUS E182481

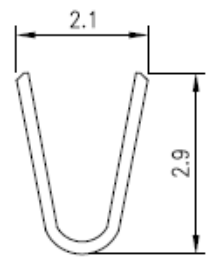
REV	DESCRIPTION	DATE



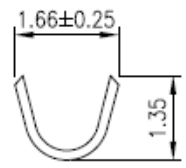
NOTES

- Crimp Material: Phosphore Bronze (0.2mm thickness)
- Crimp Plating: Tin
- Current Rating: 2 Amps
- Rated Voltage: 250V AC/DC
- DWV: 800V AC for 1 minute
- Insulation Resistance: 1000 MΩ min.
- Contact Resistance: 20 mΩ max.
- Operating Temperature: -25°C to +85°C
- Tolerance: ±0.25mm
- Crimp Wire Size: AWG 26 ~30 only
- Crimp Wire Insulation OD: 1.40mm Max.

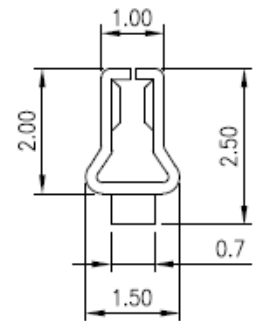
PH200T-L (loose) No MOQ
 PH200T-010 (reeled - 10000 per reel)



A-A



B-B



C-C

TOLERANCE	
X.	--
X.X	±0.25
X.XX	±0.15
X.XXX	±0.05
ANGULAR	--

the **vital** component

TITLE 2.0mm (.079") Pitch
 Wire to Board Terminal

APPROVALS		VIEW	SCALE	PART NO.	REV.
DRAWN	Frank		F	Valcon PH200-xx	A0
CHECKED	Denise				
APPROVED	Jessica	UNIT	SIZE	DWG NO.	SHEET
		MM	A4	Valcon PH200-xx	1 OF 1

