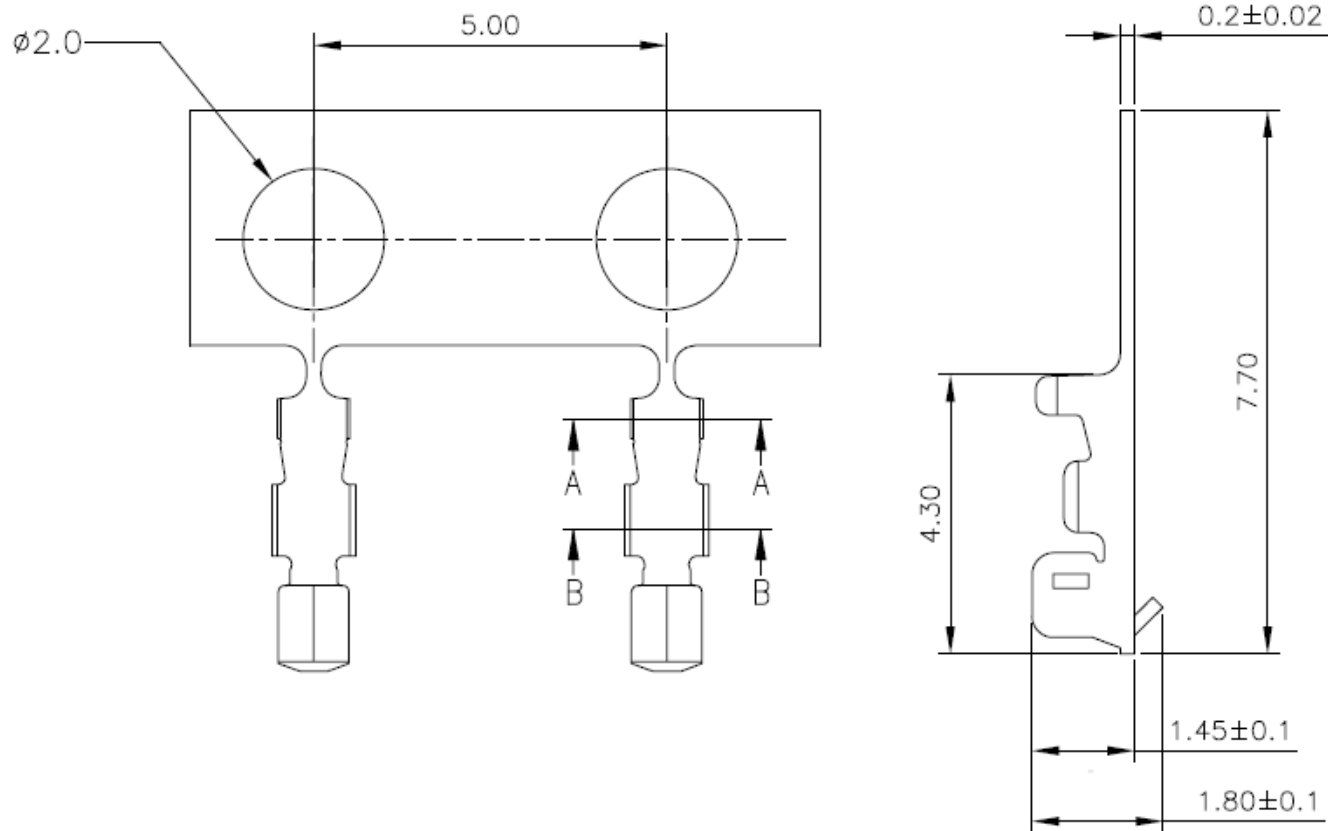


REV	DESCRIPTION	DATE
A1	EN201403250001	2014-03-25



NOTES

Used in 1160-H Series Housing
 Accepts AWG #28~32 Wire Range
 Insulation O.D.= 1.10 mm(max)
 Material : Phosphor Bronze
 Finish : Tin-Plated
 Qty/Reel : 10,000 PCS
 Thickness: 0.20mm

SPECIFICATION:

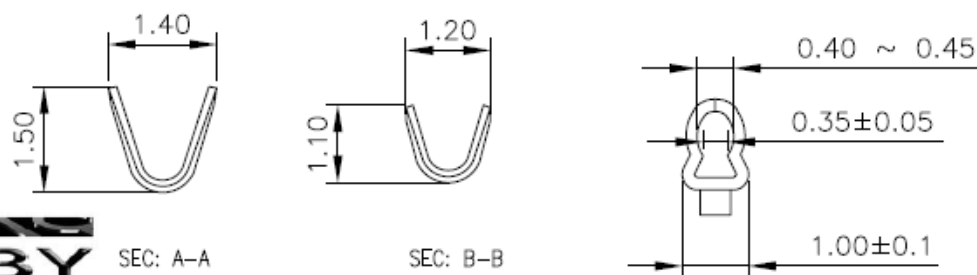
Current rating: 1 A AC / DC
 Voltage rating: 100V AC / DC
 Contact Resistance: 20m Ω Max.
 Insulation Resistance: 500M Ω Min.
 Withstanding Voltage: 500V AC /minute
 Temperature range: -25°C ~ +85°C

ORDERING INFORMATION

1160 - $\frac{T}{1}$ $\frac{T}{2}$ $\frac{P}{3}$

- 1. T : Terminal
- 2. Plated
- T : Tin
- 3. Material

P : Phosphor bronze



SEC: A-A

SEC: B-B

TOLERANCE		the vital component		
X.	---	TITLE 1.50mm(.059") Pitch Wire to Board Terminal		
X.X	± 0.30			
X.XX	± 0.20			
X.XXX	± 0.10			
ANGULAR	---			
APPROVALS		DRAWN		
		VIEW	SCALE	PART NO.
		UNIT	SIZE	DWG NO.
		MM	A4	1160-TTBP-217
		REV.	SHEET	
		A1	1 OF 1	