



(0,635 mm) .025"

QTS SERIES

HIGH SPEED GROUND PLANE HEADER

SPECIFICATIONS

For complete specifications and recommended PCB layouts see www.samtec.com?QTS

Insulator Material:

Liquid Crystal Polymer

Contact Material:

Phosphor Bronze

Plating:

Au or Sn over

50μ" (1,27 μm) Ni

Current Rating:

Contact:

1.8 A per pin

(1 pin powered per row)

Ground Plane:

23.1 A per ground plane

(1 ground plane powered)

Operating Temp:

-55°C to +125°C

Voltage Rating: 285 VAC

Max Cycles: 100

RoHS Compliant: Yes

Processing:

Lead-Free Solderable: Yes

SMT Lead Coplanarity:

(0,10 mm) .004" max (025-075)

Board Stacking:

For applications requiring more than two connectors per board contact ipg@samtec.com

RECOGNITIONS

For complete scope of recognitions see www.samtec.com/quality



FILE NO. E111594

ALSO AVAILABLE (MOQ Required)

- 11 mm & 16 mm stack height (Caution: Some automatic placement/inspection machines may have component height restrictions. Please consult machinery specifications.)
- 30μ" (0,76 μm) Gold
- Differential Pair and "Partitionable" (combine differential & single-ended banks in same connector) available.
- 100 & 125 positions per row
- Edge Mount

Contact Samtec.

*Note: -C Plating passes 10 year MFG testing

Note: Some lengths, styles and options are non-standard, non-returnable.

Board Mates:
QSS

Cable Mates:
SQCD



QTS/QSS 5 mm Stack Height	Type	Rated @ 3dB Insertion Loss*
Single-Ended Signaling	-D	9 GHz / 18 Gbps
Differential Pair Signaling	-D	8.5 GHz / 17 Gbps
Differential Pair Signaling	-DP	8.5 GHz / 17 Gbps

*Performance data includes effects of a non-optimized PCB.

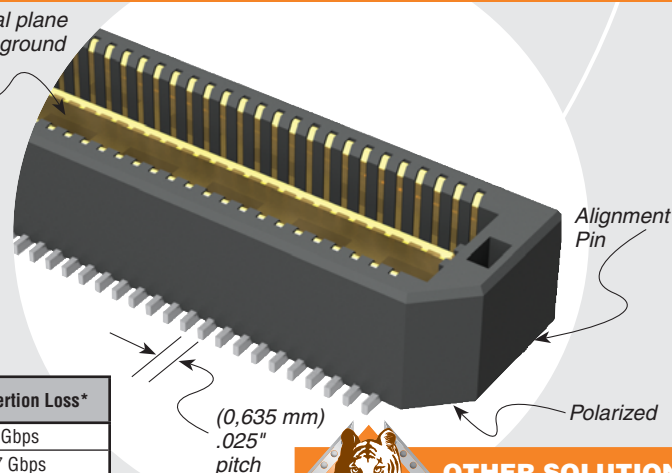
Performance data for other stack heights and complete test data available at www.samtec.com?QTS or contact sig@samtec.com

Integral metal plane
for power or ground

QTS-025-01-L-D-A

QTS-075-01-F-D-A

QTS-050-01-F-D-A



(0,635 mm)
.025"
pitch

Alignment
Pin

Polarized



OTHER SOLUTIONS

- Board spacing standoffs (See SO Series)

QTS — NO. OF POSITIONS PER ROW — LEAD STYLE — PLATING OPTION — D — A — OTHER OPTION

-025, -050, -075
(50 total positions per bank)

Specify
LEAD
STYLE
from
chart.

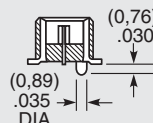
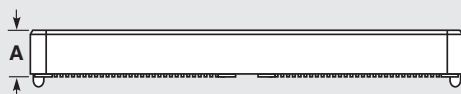
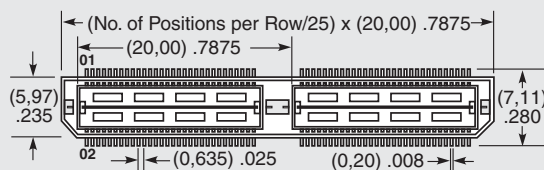
-F
= Gold Flash on Signal Pins
and Ground Plane,
Matte Tin on tails

-L
= 10μ" (0,25 μm) Gold on Signal
Pins and Ground Plane,
Matte Tin on tails

-C*
= Electro-Polished Selective
50μ" (1,27 μm) min Au over
150μ" (3,81 μm) Ni on Signal
Pins in contact area,
10μ" (0,25 μm) min Au over
50μ" (1,27 μm) Ni on Ground
Plane in contact area,
Matte Tin over 50μ" (1,27 μm)
min Ni on all solder tails

-K
= (7,00 mm)
.275" DIA
Polyimide film
Pick &
Place Pad

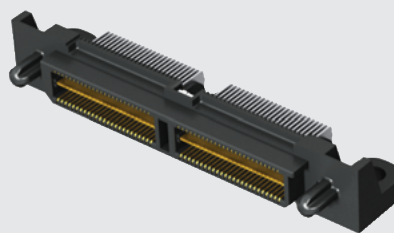
-TR
= Tape & Reel



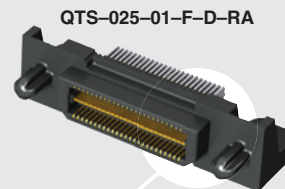
STACK HEIGHTS		
LEAD STYLE	A	MATED HEIGHT
-01	(4,27) .168	(5,00) .197
-02	(7,26) .286	(8,00) .315

Processing conditions will affect mated height.

(0,635 mm) .025"



QTS-050-01-F-D-RA-WT



QTS-025-01-F-D-RA

QTS-RA SERIES

RIGHT ANGLE GROUND PLANE HEADER

SPECIFICATIONS

For complete specifications and recommended PCB layouts see www.samtec.com/QTS-RA

Insulator Material:

Liquid Crystal Polymer

Terminal Material:

Phosphor Bronze

Plating:

Au or Sn over

50µ" (1,27 µm) Ni

Current Rating:

Contact:

2 A per pin

(1 pin powered per row)

Ground Plane:

15.7 A per ground plane

(1 ground plane powered)

Operating Temp Range:

-55°C to +125°C

Voltage Rating:

275 VAC mated with QSS-RA

RoHS Compliant:

Yes

Processing:

Lead-Free Solderable:

Yes

SMT Lead Coplanarity:

(0,10 mm) .004" max (025-075)

RECOGNITIONS

For complete scope of recognitions see www.samtec.com/quality



FILE NO. E111594

ALSO AVAILABLE (MOQ Required)

- 30µ" (0,76 µm) Gold
- Differential Pair
- "Partitionable" (combine differential & single-ended banks in same connector)
- Lead Style for (2,36 mm) .093" thick board
- -LS1 Locking Screw (Mates with QSS-RA-LS1)
- -LS2 Locking Screw (Mates with QSS-LS2)
- 100 positions per row
- Contact Samtec.

Note: Some lengths, styles and options are non-standard, non-returnable.

Board Mates:
QSS

QTS-RA/QSS-RA	Type	Rated @ 3dB Insertion Loss*
Single-Ended Signaling	-D	4.50 GHz / 9 Gbps
Differential Pair Signaling	-D	4.50 GHz / 9 Gbps
QTS-RA/QSS	Type	Rated @ 3dB Insertion Loss*
Single-Ended Signaling	-D	5.5 GHz / 11 Gbps
Differential Pair Signaling	-D	6.0 GHz / 12 Gbps

*Performance data includes effects of a non-optimized PCB.

Complete test data available at www.samtec.com/QTS-RA or contact sig@samtec.com

Integral metal plane for power or ground

Right Angle

Selectively plated

Guide Post

Final InCh
CERTIFIED

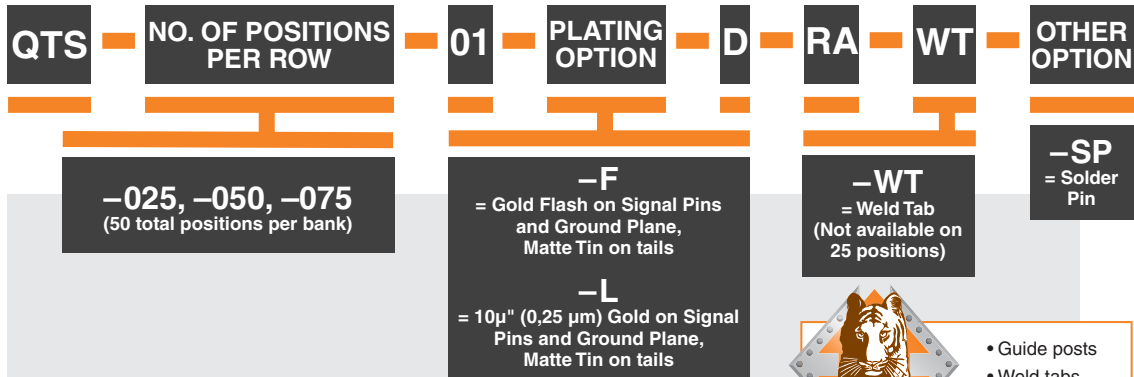
APPLICATIONS



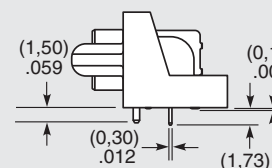
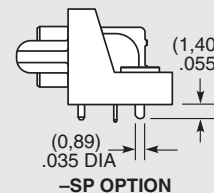
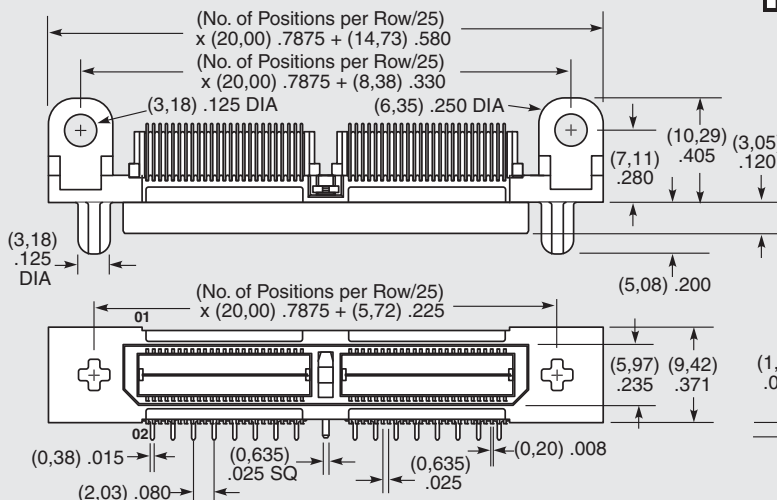
HORIZONTAL



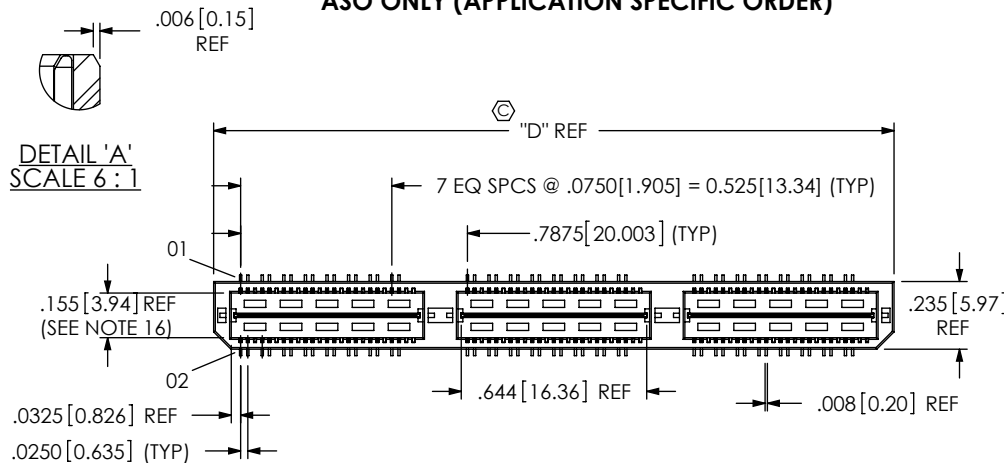
PERPENDICULAR



- Guide posts
- Weld tabs
- PCB mounting holes
- Solder pin option



DO NOT
SCALE FROM
THIS PRINT



No. OF POSITIONS
-016, -032, -048,
**-064, **-080
(PER ROW)

**SEE NOTE 17

LEAD STYLE
-01: .1680 [4.267]
-02: .2861 [7.264]
-03: .4042 [1.123]
-04: .6000 [15.240]
-05: .7180 [18.237]
-06: .8360 [21.234]

PLATING SPECIFICATION

-F: 3µ" FLASH SELECTIVE GOLD, MATTE TIN TAILS
(USE T-1SXX-XX-F & T-1G1-XX-F) (SEE NOTE 11)
-L: 10µ" LIGHT SELECTIVE GOLD, MATTE TIN TAILS
(USE T-1SXX-XX-L & T-1G1-XX-L)
-H: 30µ" HEAVY GOLD, 3µ" GOLD TAILS
(USE T-1SXX-XX-H & T-1G1-XX-G)
-STL: 30µ" HEAVY SELECTIVE GOLD, TIN LEAD TAILS
(USE T-1SXX-XX-STL & T-1G1-XX-STL)
-FTL: 3µ" FLASH SELECTIVE GOLD, TIN LEAD TAILS
(USE T-1SXX-XX-FTL & T-1G1-XX-FTL)

OPTION

-A: ALIGNMENT PINS (SEE FIG 1)
(USE QTS-25-01-D-XX-A)
-LC: LOCKING CLIPS (SEE FIG 2, NOTE 15)
(USE LC-08-TM-01)
-K: POLYIMIDE FILM PAD OPTION
(SEE FIG 3, SHT 2)
(USE K-500-300)
-TR: TAPE & REEL OPTION
(48 POS MAX)

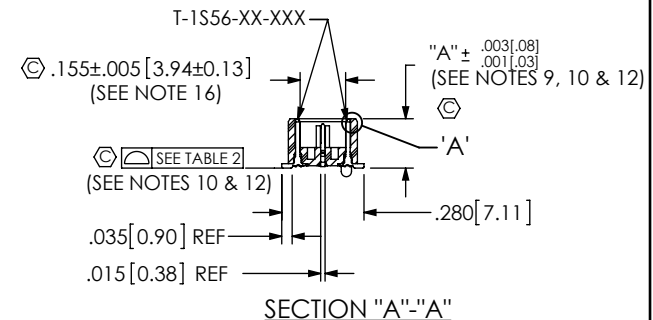
-DP: DIFFERENTIAL PAIRS

ROW SPECIFICATION

-D: DOUBLE (USE QTS-25-XX-D-XX
& QTSH-25-XX-D-XX)

No. OF BANKS

☒ = SEE SHEET 3
* = NOT ENGINEERING APPROVED



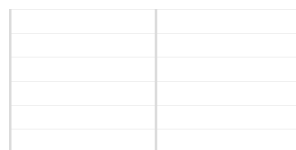
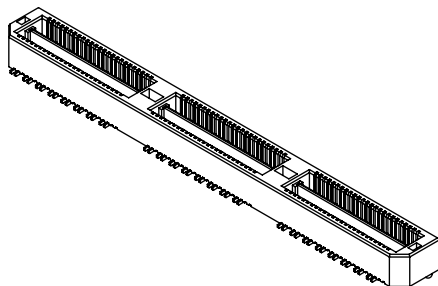
NOTES:

1. Ⓢ REPRESENTS A CRITICAL DIMENSION.
2. NOTE DELETED.
3. NOTE DELETED.
4. MINIMUM TERMINAL RETENTION: 5 OZ.
5. MINIMUM GROUND PLANE RETENTION: 1 LB.
6. NOTE WAS DELETED.
7. PARTS TO BE MOLDED TO POSITION.
8. NOTE DELETED.
9. MAXIMUM VARIANCE OF .002 [0.05].
10. DIMENSION APPLIES TO TERMINALS AND GROUND PLANES INDEPENDENT OF THE GROUND PLANE OR TERMINAL RESPECTIVELY.
11. -L PLATING CAN BE SUBSTITUTED FOR -F PLATING.
12. GROUND PLANE PRESS HEIGHT MUST BE .003 [0.08] LESS THAN THE MAX HEIGHT OR .001 [0.03] GREATER THAN THE MINIMUM HEIGHT OF THE TERMINALS.
13. LEAD STYLES -03 THRU -06: TOP BODY (QTS) CANNOT HAVE -A OPTION.
14. NOTE DELETED.
15. DUE TO THE HIGH AMOUNT OF INSERTION FORCE NEEDED, THE -LC OPTION IS NOT COMPATIBLE WITH AUTO PLACEMENT. SAMTEC RECOMMENDS MANUAL PLACEMENT FOR ALL ASSEMBLIES WITH THE -LC OPTION."
16. MINIMUM ROW TO ROW IS .152. PIN CAN EXTEND PAST WALL .003 MAX.
17. AVAILABLE FOR EXISTING CUSTOMERS ONLY.

TABLE 6		
No. OF POS	"D"	"E"
-016	.788 [20.00]	.728 [18.48]
-032	1.575 [40.01]	1.515 [38.48]
-048	2.363 [60.01]	2.303 [58.48]
** -064	3.150 [80.01]	3.090 [78.49]
** -080	3.938 [100.01]	3.878 [98.49]

** = SEE NOTE 17

TABLE 1						MATED HEIGHT WITH QSS-01-DP
STYLE	"A"	"B"	BODY	GROUND PLANE	TERMINAL	
-01	.1680	.1600	QTS-25-01-D-XX	T-1G1-01-XXX	T-1S56-01-XXX	.197 [5.00] REF
-02	.2861	.2781	QTS-25-02-D-XX	T-1G1-02-XXX	T-1S56-22-XXX	.315 [8.00] REF



UNLESS OTHERWISE SPECIFIED,
DIMENSIONS ARE IN INCHES.
TOLERANCES ARE:
DECIMALS ANGLES
.XX: ±.01 [.3] ± 2°
.XXX: ±.005 [.13]
.XXXX: ±.0020 [.051]

PROPRIETARY NOTE

THIS DOCUMENT CONTAINS INFORMATION
CONFIDENTIAL AND PROPRIETARY TO
SAMTEC, INC. AND SHALL NOT BE REPRODUCED
OR TRANSFERRED TO OTHER DOCUMENTS OR
DISCLOSED TO OTHERS OR USED FOR ANY
PURPOSE OTHER THAN THAT WHICH IT WAS
OBTAINED WITHOUT THE EXPRESSED WRITTEN
CONSENT OF SAMTEC, INC.

samtec

520 PARK EAST BLVD, NEW ALBANY, IN 47150
PHONE: 812-944-6733 FAX: 812-948-5047
e-Mail: info@SAMTEC.com code: 55322

MATERIAL: DO NOT SCALE DRAWING SHEET SCALE: 1.5:1

DESCRIPTION:
.635mm DIFFERENTIAL PAIRS HS TERMINAL ASSEMBLY

INSULATOR: LCP, UL94V-0; COLOR: BLACK
TERMINAL & GROUND PLANE: PHOS BRONZE

DWG. NO.
QTS-XXX-XX-XXX-D-DP-XX

BY: KEVIN B 09-14-2010 SHEET 1 OF 3

F:\DWG\MISC\MKTG\QTS-XXX-XX-XXX-D-DP-XX-MKT.SLDDRW

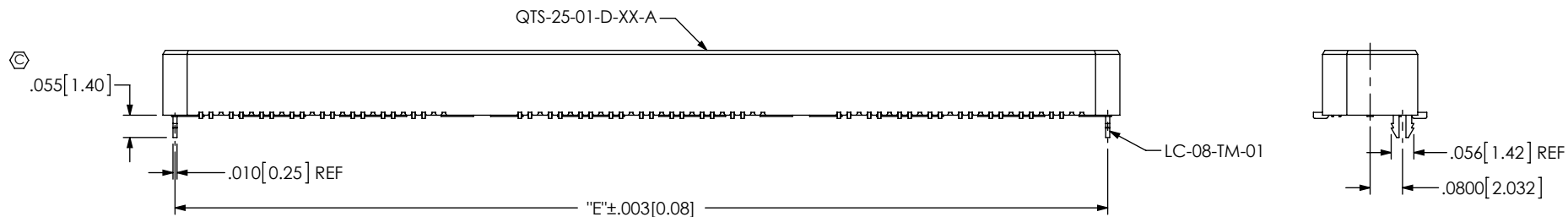


FIG 2
-LC: LOCKING CLIP OPTION
(QTS-048-01-XXX-D-DP-LC SHOWN)
(DIFFERENT AS SHOWN, OTHERWISE SAME AS FIG 1)

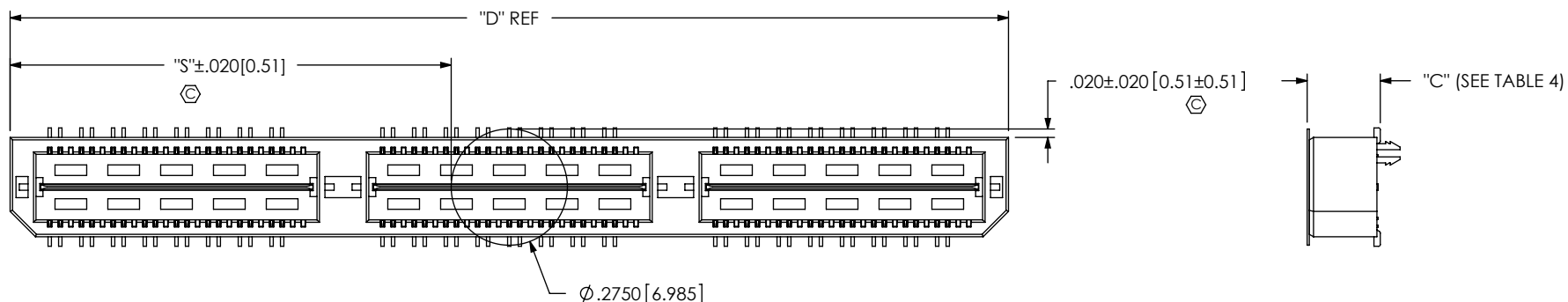


FIG 3
-K: POLYIMIDE FILM PAD
(USE K-DOT-500-300)

TABLE 7	
No OF POS	"S"
-016	.256 [6.50]
-032	.650 [16.51]
-048	1.043 [26.49]
** -064	1.437 [36.50]
** -080	1.831 [46.51]

** = SEE NOTE 17

TABLE 4	
STYLE	"C"
-01	.173 [4.39]
-02	.291 [7.39]
-03	.409 [10.39]
-04	.605 [15.37]
* -05	.723 [18.36]
* -06	.841 [21.36]

*

*

* =NOT ENGINEERING APPROVED

PROPRIETARY NOTE

THIS DOCUMENT CONTAINS INFORMATION
CONFIDENTIAL AND PROPRIETARY TO
SAMTEC, INC. AND SHALL NOT BE REPRODUCED
OR TRANSFERRED TO OTHER DOCUMENTS OR
DISCLOSED TO OTHERS OR USED FOR ANY
PURPOSE OTHER THAN THAT WHICH IT WAS
OBTAINED WITHOUT THE EXPRESSED WRITTEN
CONSENT OF SAMTEC, INC.

DO NOT SCALE DRAWING

SHEET SCALE: 2.5:1

samtec

520 PARK EAST BLVD, NEW ALBANY, IN 47150
PHONE: 812-944-6733 FAX: 812-948-5047
e-Mail: info@SAMTEC.com code: 55322

DESCRIPTION:
.635mm DIFFERENTIAL PAIRS HS TERMINAL ASSEMBLY

DWG. NO.
QTS-XXX-XX-XXX-D-DP-XX

BY: KEVIN B 09-14-2010 SHEET 2 OF 3

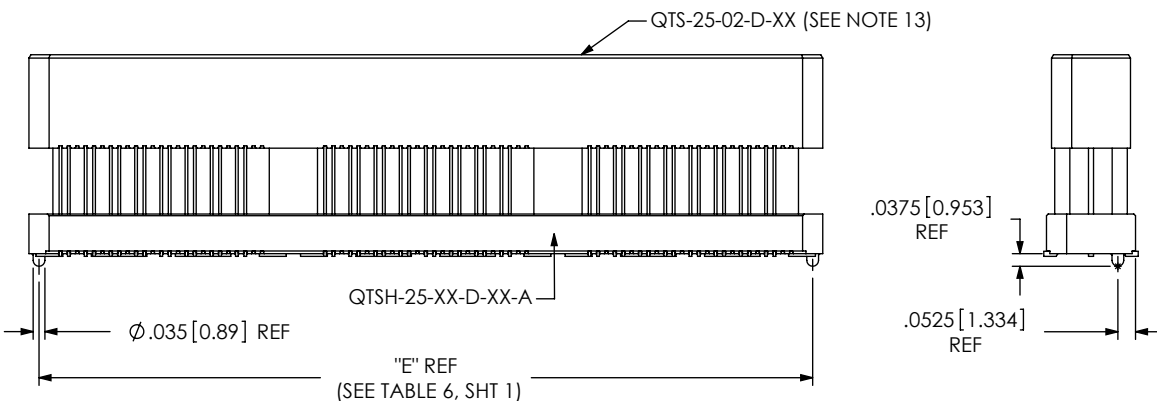
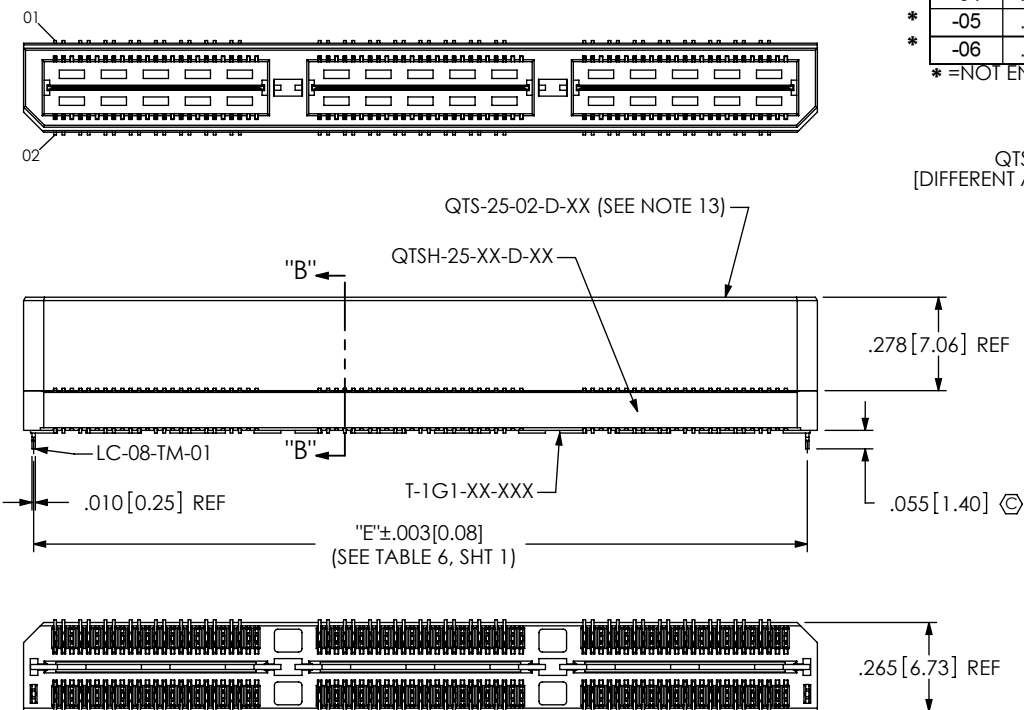
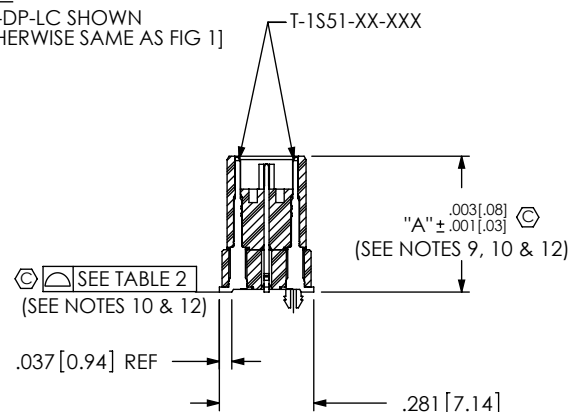


FIG 5
(QTS-048-04-XXX-D-DP-A SHOWN)
(DIFFERENT AS SHOWN, OTHERWISE SAME AS FIG 1)
(STYLE -03, -04, -05 & -06)

TABLE 5					MATED HEIGHT WITH QSS-01-DP
STYLE	"A"	GROUND PLANE	TERMINAL	SPACER BODY	
-03	.4042 [10.267]	T-1G1-03-XXX	T-1S51-03-XXX	QTS-25-01-D-XX-X	.433 [11.00] REF
-04	.6000 [15.240]	T-1G1-04-XXX	T-1S51-04-XXX	QTS-25-01-D-XX-X	.630 [16.00] REF
-05	.7180 [18.237]	T-1G1-05-XXX	T-1S51-05-XXX	QTS-25-02-D-XX-X	.748 [19.00] REF
-06	.8360 [21.234]	T-1G1-06-XXX	T-1S51-06-XXX	QTS-25-02-D-XX-X	.866 [22.00] REF

* =NOT ENGINEERING APPROVED

FIG 4
QTS-048-03-XXX-D-DP-LC SHOWN
(DIFFERENT AS SHOWN, OTHERWISE SAME AS FIG 1)



SECTION "B"-"B"

PROPRIETARY NOTE

THIS DOCUMENT CONTAINS INFORMATION
CONFIDENTIAL AND PROPRIETARY TO
SAMTEC, INC. AND SHALL NOT BE REPRODUCED
OR TRANSFERRED TO OTHER DOCUMENTS OR
DISCLOSED TO OTHERS OR USED FOR ANY
PURPOSE OTHER THAN THAT WHICH IT WAS
OBTAINED WITHOUT THE EXPRESSED WRITTEN
CONSENT OF SAMTEC, INC.

DO NOT SCALE DRAWING

SHEET SCALE: 1.75:1

samtec

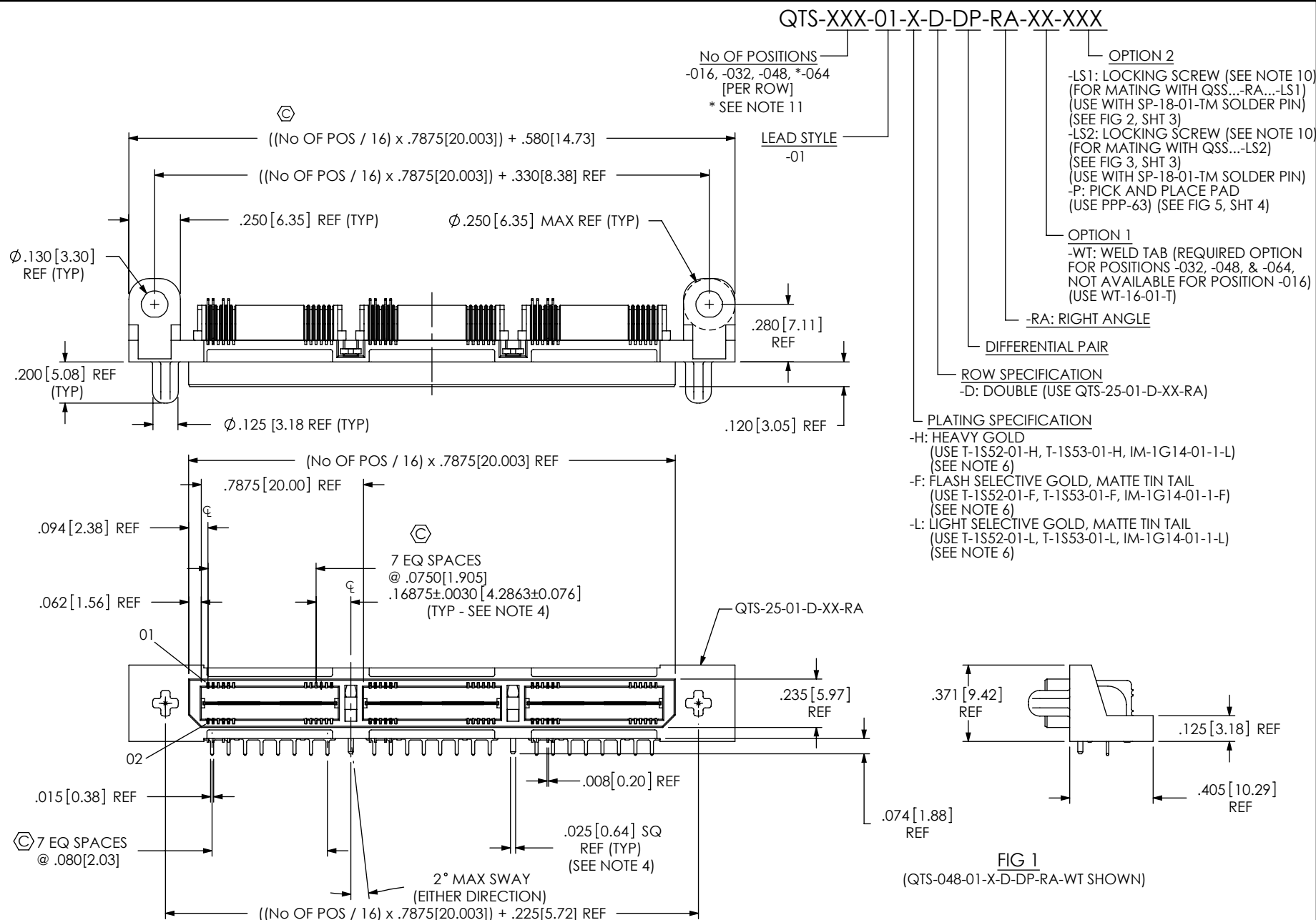
520 PARK EAST BLVD, NEW ALBANY, IN 47150
PHONE: 812-944-6733 FAX: 812-948-5047
e-Mail: info@SAMTEC.com code: 55322

DESCRIPTION:
.635mm DIFFERENTIAL PAIRS HS TERMINAL ASSEMBLY

DWG. NO.
QTS-XXX-XX-XXX-D-DP-XX

BY: KEVIN B 09-14-2010 SHEET 3 OF 3

DO NOT
SCALE FROM
THIS PRINT



UNLESS OTHERWISE SPECIFIED,
DIMENSIONS ARE IN INCHES.

TOLERANCES ARE:

DECIMALS ANGLES
.XX: $\pm .01$ [.3] 2°
.XXX: $\pm .005$ [.13]
.XXXX: $\pm .0020$ [.051]

PROPRIETARY NOTE

THIS DOCUMENT CONTAINS INFORMATION
CONFIDENTIAL AND PROPRIETARY TO
SAMTEC, INC. AND SHALL NOT BE REPRODUCED
OR TRANSFERRED TO OTHER DOCUMENTS OR
DISCLOSED TO OTHERS OR USED FOR ANY
PURPOSE OTHER THAN THAT WHICH IT WAS
OBTAINED WITHOUT THE EXPRESSED WRITTEN
CONSENT OF SAMTEC, INC.

samtec

520 PARK EAST BLVD, NEW ALBANY, IN 47150
PHONE: 812-944-6733 FAX: 812-948-5047
e-Mail: info@SAMTEC.com code 55322

MATERIAL: DO NOT SCALE DRAWING
INSULATOR:
TERMINAL & GROUND PLANE: PHOS BRONZE

SHEET SCALE: 1:0.6666666666666667

DESCRIPTION:
.635mm DOUBLE ROW RIGHT ANGLE TERMINAL STRIP

DWG. NO.

QTS-XXX-01-X-D-DP-RA-XX-XXX

BY: DEAN P 2/13/2003 SHEET 1 OF 4

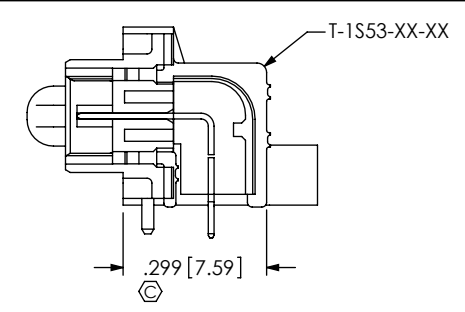
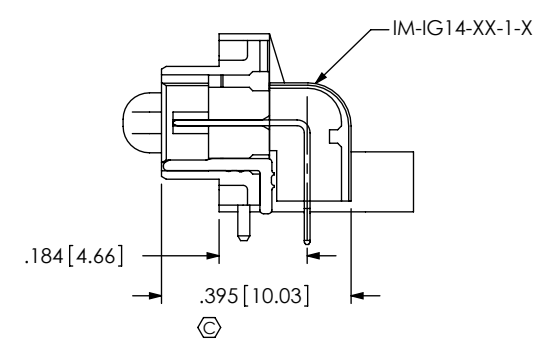
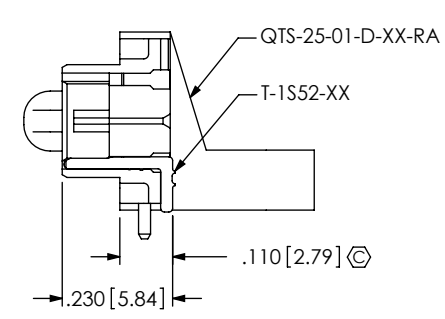
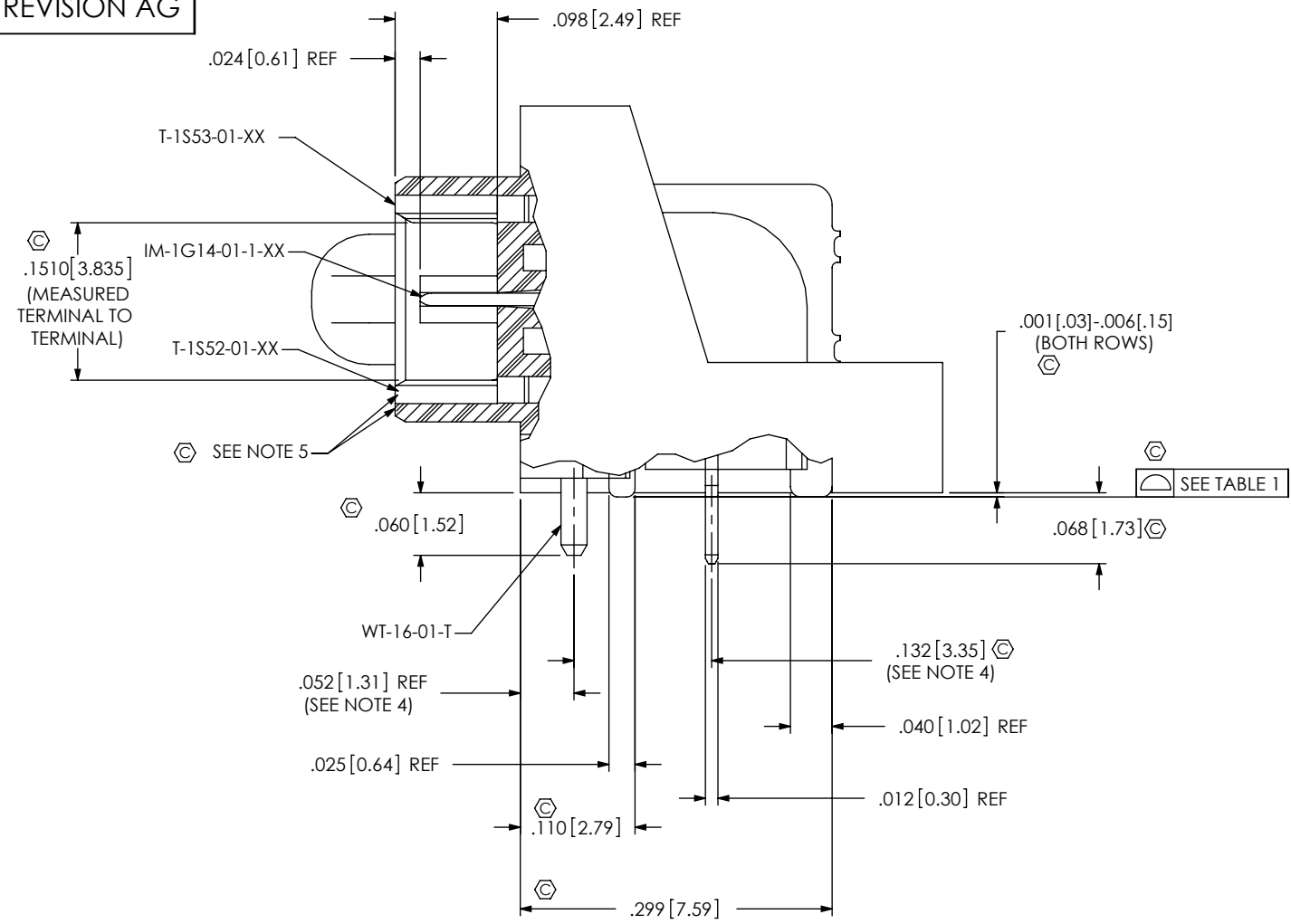


TABLE 1	
No OF POSITIONS	COPLANARITY
-016 THRU -048	.004[0.10]
*-064	.006[0.15]

* = SEE NOTE 11

PROPRIETARY NOTE
THIS DOCUMENT CONTAINS INFORMATION
CONFIDENTIAL AND PROPRIETARY TO
SAMTEC, INC. AND SHALL NOT BE REPRODUCED
OR TRANSFERRED TO OTHER DOCUMENTS OR
DISCLOSED TO OTHERS OR USED FOR ANY
PURPOSE OTHER THAN THAT WHICH IT WAS
OBTAINED WITHOUT THE EXPRESSED WRITTEN
CONSENT OF SAMTEC, INC.

DO NOT SCALE DRAWING

SHEET SCALE: 1:0.16667

520 PARK EAST BLVD, NEW ALBANY, IN 47150
PHONE: 812-944-6733 FAX: 812-948-5047
e-Mail info@SAMTEC.com code 55322

DESCRIPTION:
.635mm DOUBLE ROW RIGHT ANGLE TERMINAL STRIP

DWG. NO.
QTS-XXX-01-X-D-DP-RA-XX-XXX

BY: DEAN P 2/13/2003

SHEET 2 OF 4

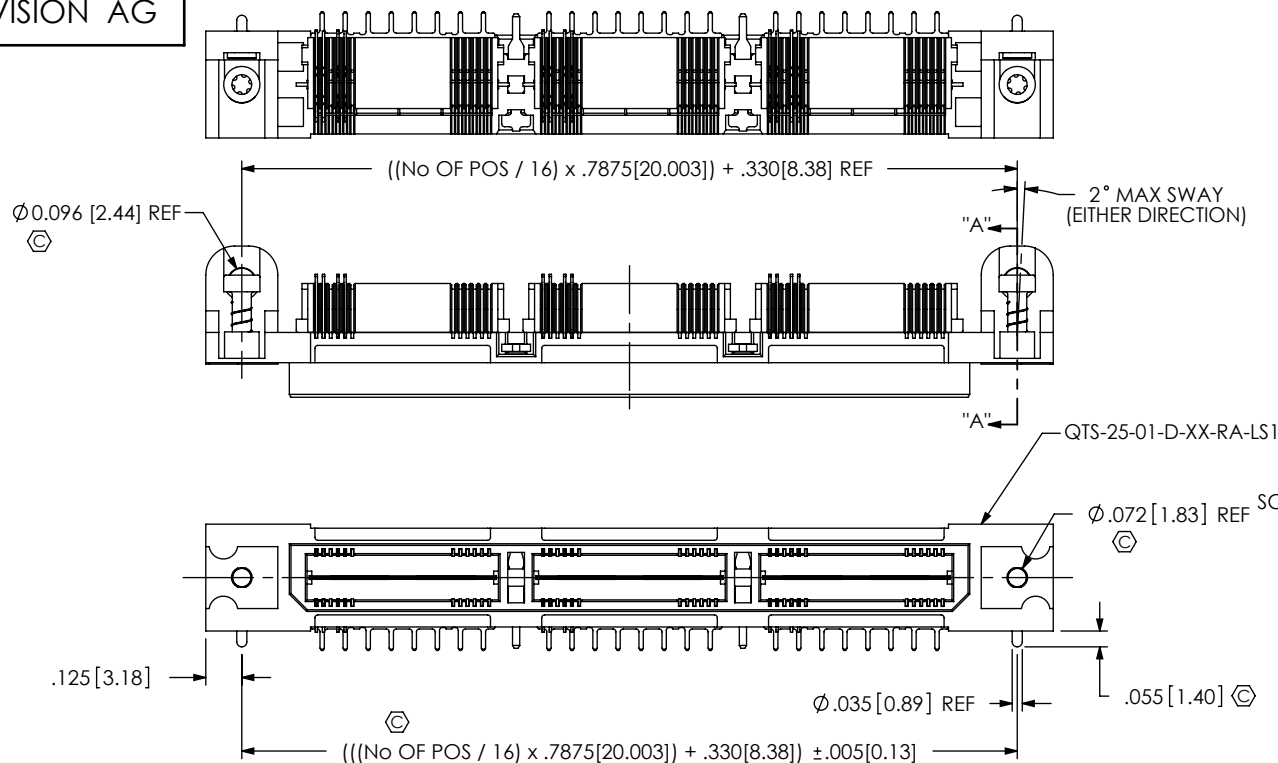
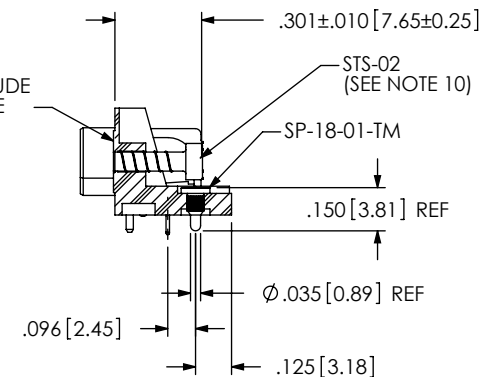
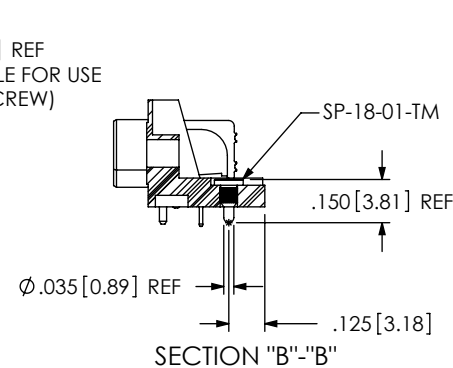
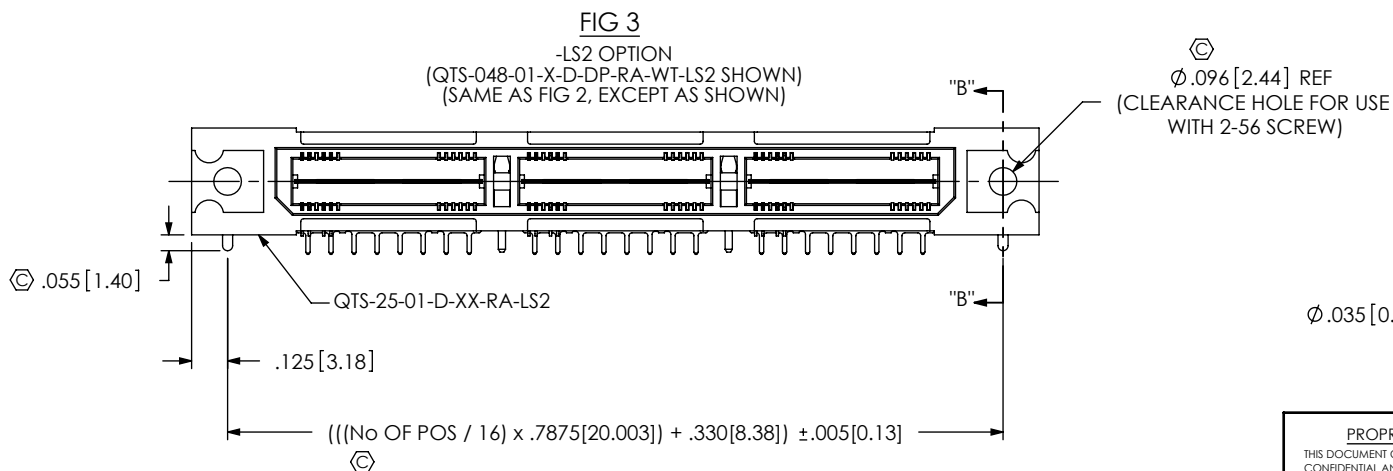


FIG 2
-LS1 OPTION
(QTS-048-01-X-D-DP-RA-WT-LS1 SHOWN)
(SAME AS FIG 1, EXCEPT AS SHOWN)



SECTION "A"-"A"



SECTION "B"-"B"

PROPRIETARY NOTE
THIS DOCUMENT CONTAINS INFORMATION
CONFIDENTIAL AND PROPRIETARY TO
SAMTEC, INC. AND SHALL NOT BE REPRODUCED
OR TRANSFERRED TO OTHER DOCUMENTS OR
DISCLOSED TO OTHERS OR USED FOR ANY
PURPOSE OTHER THAN THAT WHICH IT WAS
OBTAINED WITHOUT THE EXPRESSED WRITTEN
CONSENT OF SAMTEC, INC.

DO NOT SCALE DRAWING

SHEET SCALE: 1:0.666667

samtec

520 PARK EAST BLVD, NEW ALBANY, IN 47150
PHONE: 812-944-6733 FAX: 812-948-5047
e-Mail: info@SAMTEC.com code 55322

DESCRIPTION:
.635mm DOUBLE ROW RIGHT ANGLE TERMINAL STRIP

DWG. NO.
QTS-XXX-01-X-D-DP-RA-XX-XXX

BY: DEAN P 2/13/2003 SHEET 3 OF 4

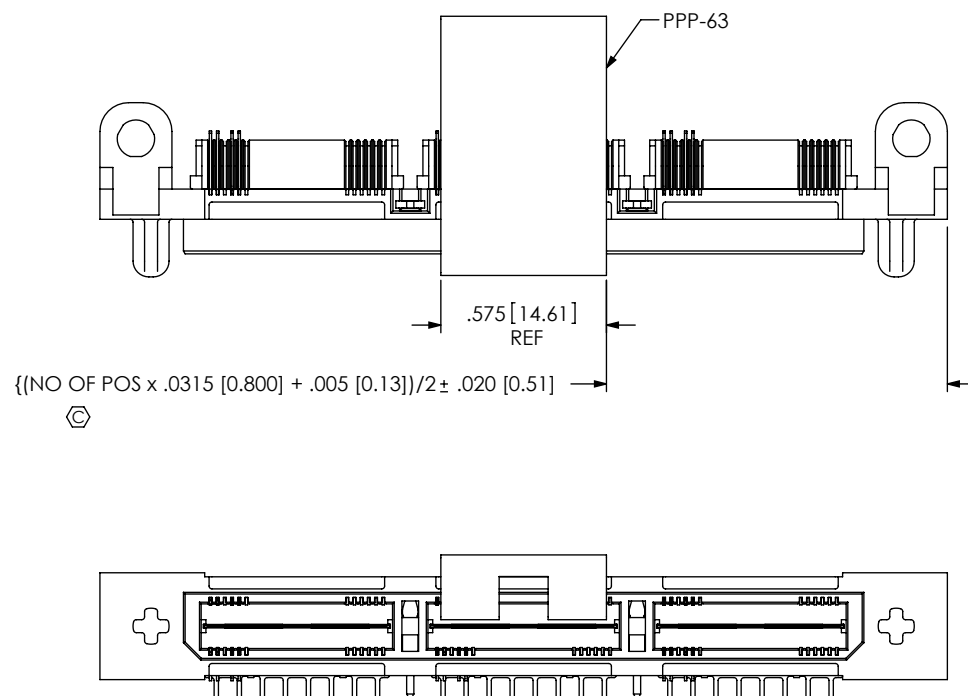
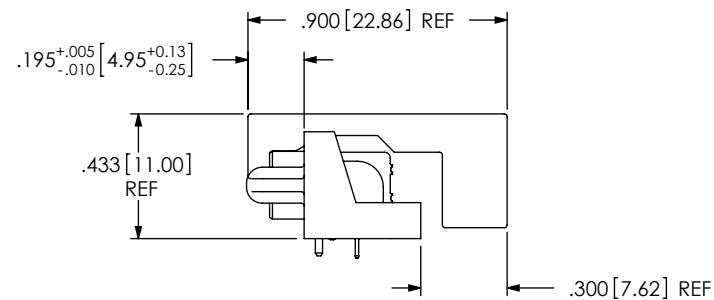


FIG 4
-P OPTION
(QTS-075-01-X-D-DP-RA-WT-P SHOWN)
(SAME AS FIG 1, EXCEPT AS SHOWN)



PROPRIETARY NOTE
THIS DOCUMENT CONTAINS INFORMATION
CONFIDENTIAL AND PROPRIETARY TO
SAMTEC, INC. AND SHALL NOT BE REPRODUCED
OR TRANSFERRED TO OTHER DOCUMENTS OR
DISCLOSED TO OTHERS OR USED FOR ANY
PURPOSE OTHER THAN THAT WHICH IT WAS
OBTAINED WITHOUT THE EXPRESSED WRITTEN
CONSENT OF SAMTEC, INC.

DO NOT SCALE DRAWING

SHEET SCALE: 1:0.666667

samtec

520 PARK EAST BLVD, NEW ALBANY, IN 47150
PHONE: 812-944-6733 FAX: 812-948-5047
e-Mail: info@SAMTEC.com code 55322

DESCRIPTION:
.635mm DOUBLE ROW RIGHT ANGLE TERMINAL STRIP

DWG. NO.
QTS-XXX-01-X-D-DP-RA-XX-XXX

BY: DEAN P 2/13/2003 SHEET 4 OF 4

REVISION P

DO NOT
SCALE FROM
THIS PRINT

TABLE 1					
EDGE MOUNT THICKNESS	"A"	"B"	"C"	BODY	CONTACT
-EM2	.130[3.30]	.0670[1.702]	.058[1.47]	QTS-25-01-D-EM2-XX	T-1S42-01-XXX
*-EM3	.160[4.06]	.0980[2.489]	.088[2.24]	QTS-25-01-D-EM3-XX	T-1S42-02-XXX

* = SEE NOTE 12

ASO ONLY (APPLICATION SPECIFIC ORDER)

QTS-XXX-01-XXX-D-DP-EMX-XX

No OF PAIRS
-016, -032, -048,
*-064, *-080
(PER ROW)

**SEE NOTE 13

LEAD STYLE
-01: .1680[4.267]

OPTION
-TY: TRAY PACKAGING

EDGE MOUNT THICKNESS
-EM2: .064[1.63] ±.004 PCB
(USE QTS-25-01-D-EM2-XX
& T-1S42-01-XXX)
*-EM3: (USE QTS-25-01-D-EM3-XX
& T-1S42-02-XXX)

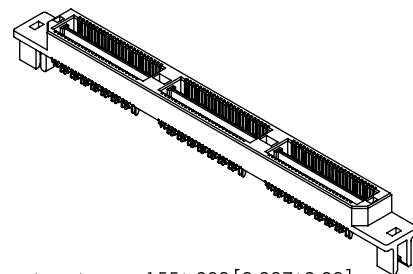
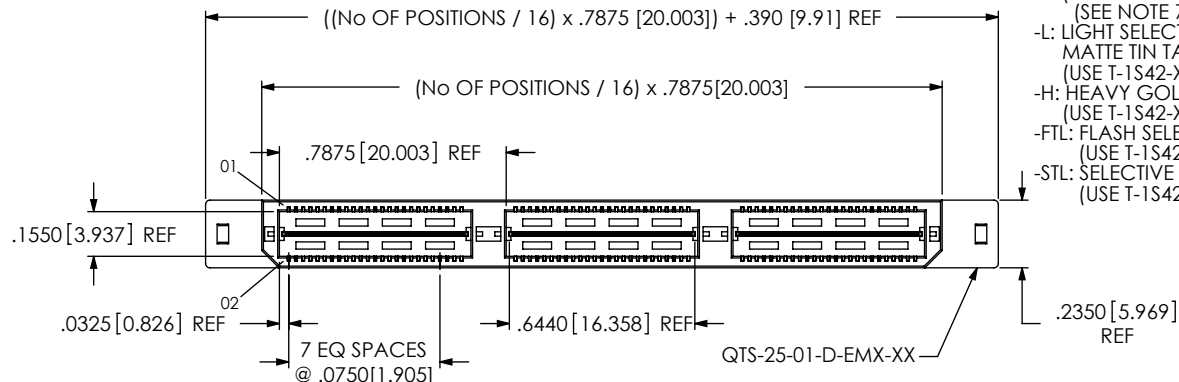
SEE NOTE 12

DIFFERENTIAL PAIRS

ROW SPECIFICATION
-D: DOUBLE
(USE QTS-25-XX-D-EMX-XX)

No OF BANKS

PLATING SPECIFICATION
-F: FLASH SELECTIVE GOLD WITH
MATTE TIN TAILS
(USE T-1S42-XX-F & T-1G1-01-F)
(SEE NOTE 7)
-L: LIGHT SELECTIVE GOLD WITH
MATTE TIN TAILS
(USE T-1S42-XX-L & T-1G1-01-L)
-H: HEAVY GOLD
(USE T-1S42-XX-H & T-1G1-01-G)
-FTL: FLASH SELECTIVE GOLD, TIN/LEAD TAIL
(USE T-1S42-XX-FTL & T-1G1-01-FTL)
-STL: SELECTIVE GOLD, TIN/LEAD TAIL
(USE T-1S42-XX-STL & T-1G1-01-STL)



SECTION "A"-A"

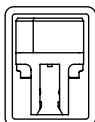
NOTES:

1. Ⓢ REPRESENTS A CRITICAL DIMENSION.
2. BURR ALLOWANCE: .0015[.038] MAX.
3. MINIMUM PUSHOUT FORCE: 6 OZ.
4. MINIMUM GROUND PLANE RETENTION: 1 LB.
5. NOTE DELETED.
6. PARTS TO BE MOLDED TO POSITION.
7. -L PLATING CAN BE SUBSTITUTED FOR -F PLATING (CONTACT).
8. NOTE DELETED.
9. NOTE DELETED.
10. SEE www.samtec.com/processing/edgemt_tectalk/index.htm FOR INFORMATION ON PROCESSING EDGE MOUNT PARTS TO BOARDS.
11. MAX VARIANCE OF .002[.05].
12. -EM3 IS NOT A STANDARD OFFERING; AVAILABLE AS AN ASP ONLY. PLEASE CONTACT SAMTEC INTERCONNECT PROCESSING GROUP WITH ORDER INQUIRIES
13. FOR NEW APPLICATIONS REQUIRING THESE POSITIONS, PLEASE CONTACT SAMTEC INTERCONNECT PROCESSING GROUP.
14. PARTS WITHOUT -TY OPTION SHALL BE PACKAGED IN TRAYS.

PACKAGING VIEW

[PARTS TO HAVE POSITION #1 LOADED
IN SAME DIRECTION AS ARROW]

EDGE MOUNT -EM2 & -EM3



TUBE: PT-1-24-01-95
PLUG: TP-03

TABLE 2

No OF PAIRS	MAX BOW	GND PLANE COPLANARITY
-016, -032, -048	.004 [.10]	.004[.10]
-064, -080	.006 [.15]	.005[1.27]

UNLESS OTHERWISE SPECIFIED,
DIMENSIONS ARE IN INCHES.
TOLERANCES ARE:
DECIMALS ANGLES
.XX: ±.01[.3]
.XXX: ±.005[.13]
.XXXX: ±.0020[.051]

PROPRIETARY NOTE

THIS DOCUMENT CONTAINS INFORMATION
CONFIDENTIAL AND PROPRIETARY TO
SAMTEC, INC. AND SHALL NOT BE REPRODUCED
OR TRANSFERRED TO OTHER DOCUMENTS OR
DISCLOSED TO OTHERS OR USED FOR ANY
PURPOSE OTHER THAN THAT WHICH IT WAS
OBTAINED WITHOUT THE EXPRESSED WRITTEN
CONSENT OF SAMTEC, INC.

MATERIAL: DO NOT SCALE DRAWING
INSULATOR: LCP,COLOR: BLACK
TERMINAL: PHOS BRONZE
GROUND PLANE: PHOS BRONZE

SHEET SCALE: 1.5:1

F:\DWG\MISC\Mktg\QTS-XXX-01-XXX-D-DP-EMX-XX-MKT.slddrw

samtec

520 PARK EAST BLVD, NEW ALBANY, IN 47150
PHONE: 812-944-6733 FAX: 812-948-5047
e-Mail: info@SAMTEC.com code: 55322

DESCRIPTION:
.635mm HS DIFF PAIR EDGE MOUNT TERMINAL ASSEMBLY

DWG. NO.
QTS-XXX-01-XXX-D-DP-EMX-XX

BY: KEVIN B 05/28/01 SHEET 1 OF 1

DO NOT
SCALE FROM
THIS PRINT

TABLE 1					
EDGE MOUNT THICKNESS	"A"	"B"	"C"	BODY	CONTACT
-EM2	.130[3.30]	.0670[1.702]	.058[1.47]	QTS-25-01-D-EM2-XX	T-1S42-01-XXX
*-EM3	.160[4.06]	.0980[2.489]	.088[2.24]	QTS-25-01-D-EM3-XX	T-1S42-02-XXX

* = SEE NOTE 11

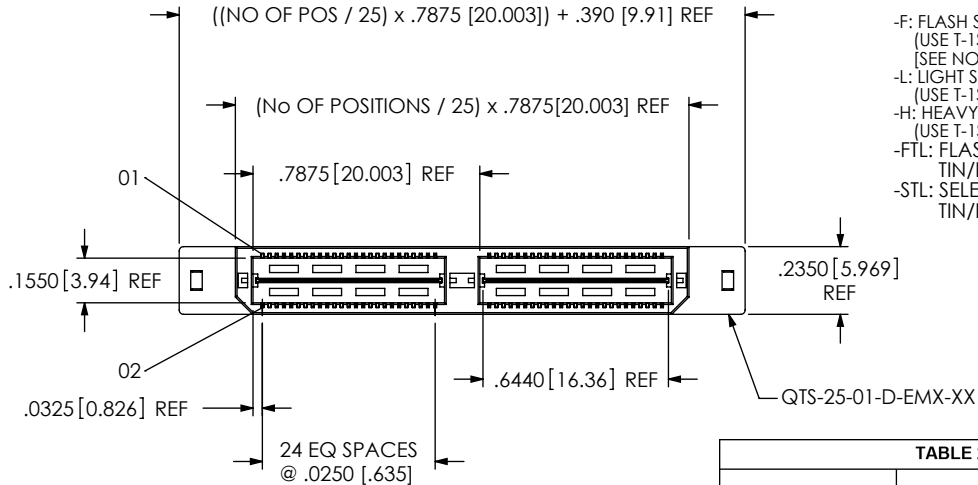
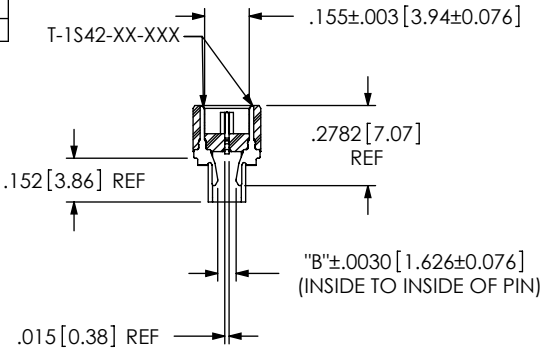
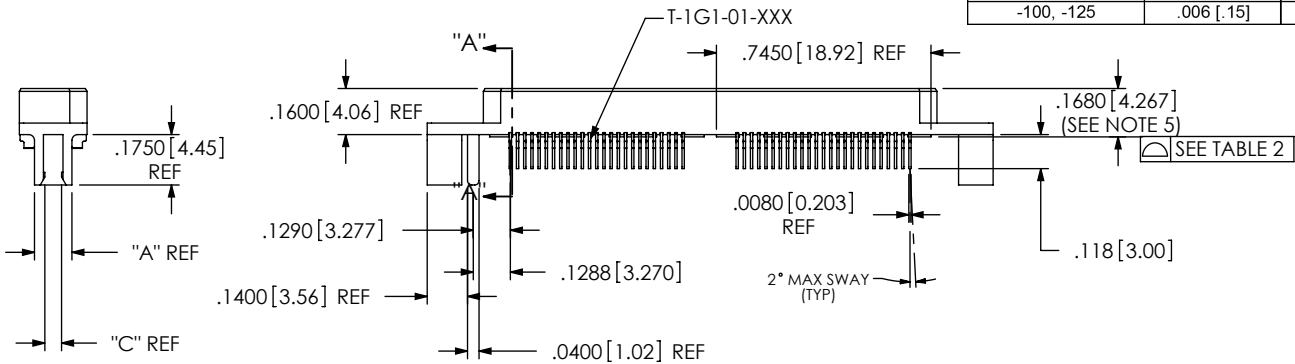


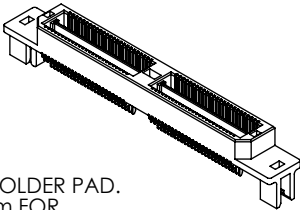
TABLE 2		
No OF POSITIONS	MAX BOW	GND PLANE COPLANARITY
-025, -050, -075	.004 [.10]	.004[.10]
-100, -125	.006 [.15]	.005[1.27]



SECTION "A"-"A"

NOTES:

1. REPRESENTS A CRITICAL DIMENSION.
2. BURR ALLOWANCE: .0015 [.038] MAX.
3. MINIMUM PUSHOUT FORCE: 6 OZ.
4. MINIMUM GROUND PLANE RETENTION: 1 LB.
5. MAXIMUM VARIANCE: .002 [.05].
6. PARTS TO BE MOLDED TO POSITION.
7. -L PLATING CAN BE SUBSTITUTED FOR -F PLATING (TERMINAL).
8. NOTE DELETED.
9. BOARD THICKNESS TO BE MEASURED FROM SOLDER PAD TO SOLDER PAD.
10. SEE www.samtec.com/processing/edgemt_tectalk/index.htm FOR PROCESSING EDGE MOUNT PARTS TO BOARD.
11. -EM3 IS NOT A STANDARD OFFERING; AVAILABLE AS AN ASP ONLY. PLEASE CONTACT SAMTEC INTERCONNECT PROCESSING GROUP WITH ORDER INQUIRIES
12. FOR NEW APPLICATIONS REQUIRING THESE POSITIONS, PLEASE CONTACT SAMTEC INTERCONNECT PROCESSING GROUP.
13. PARTS WITHOUT -TY OPTION SHALL BE PACKAGED IN TRAYS.



QTS-XXX-01-XXX-D-EMX-XX

No OF POSITIONS
-025, -050, -075,
**-100, **-125
(PER ROW)

**SEE NOTE 12

LEAD STYLE
-01: .1680[4.267]

PLATING SPECIFICATION

- F: FLASH SELECTIVE GOLD WITH MATTE TIN TAILS
(USE T-1S42-XX-F & T-1G1-01-F)
[SEE NOTE 7]
- L: LIGHT SELECTIVE GOLD WITH MATTE TIN TAILS
(USE T-1S42-XX-L & T-1G1-01-L)
- H: HEAVY GOLD
(USE T-1S42-XX-H & T-1G1-01-G)
- FTL: FLASH SELECTIVE GOLD,
TIN/LEAD TAIL (USE T-1S42-XX-FTL & T-1G1-01-FTL)
- STL: SELECTIVE GOLD,
TIN/LEAD TAIL (USE T-1S42-XX-STL & T-1G1-01-STL)

OPTION
-TY: TRAY PACKAGING

EDGE MOUNT THICKNESS
-EM2: .064[1.63] +/- .004 PCB
(USE QTS-25-01-D-EM2-XX &
T-1S42-01-XXX)

-EM3:
(USE QTS-25-01-D-EM3-XX &
T-1S42-02-XXX)
SEE NOTE 11

ROW SPECIFICATION
-D: DOUBLE
(USE QTS-25-XX-D-EMX-XX)
No OF BANKS

UNLESS OTHERWISE SPECIFIED,
DIMENSIONS ARE IN INCHES.
TOLERANCES ARE:
DECIMALS ANGLES
.XX: ±.01[.3]
.XXX: ±.005[.13]
.XXXX: ±.0020[.051]

PROPRIETARY NOTE
THIS DOCUMENT CONTAINS INFORMATION
CONFIDENTIAL AND PROPRIETARY TO
SAMTEC, INC. AND SHALL NOT BE REPRODUCED
OR TRANSFERRED TO OTHER DOCUMENTS OR
DISCLOSED TO OTHERS OR USED FOR ANY
PURPOSE OTHER THAN THAT WHICH IT WAS
OBTAINED WITHOUT THE EXPRESSED WRITTEN
CONSENT OF SAMTEC, INC.

MATERIAL: DO NOT SCALE DRAWING
INSULATOR: LCP, COLOR: BLACK
TERMINAL: PHOS BRONZE
GROUND PLANE: PHOS BRONZE

SHEET SCALE: 1.5:1

samtec

520 PARK EAST BLVD, NEW ALBANY, IN 47150
PHONE: 812-944-6733 FAX: 812-948-5047
e-Mail: info@SAMTEC.com code: 55322

DESCRIPTION:
.635mm EDGE MOUNT HS TERMINAL ASSEMBLY

DWG. NO.
QTS-XXX-01-XXX-D-EMX-XX

BY: DEAN P 4/24/2000 SHEET 1 OF 1