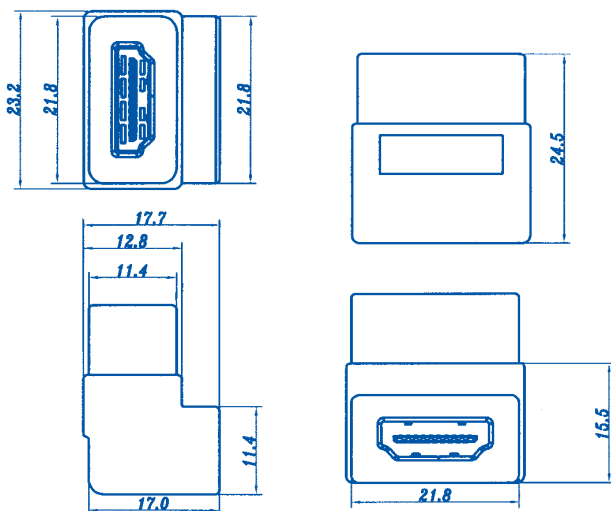
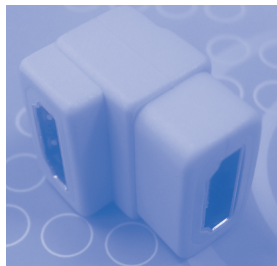


## TWPA-HDMI-RA-1 Series

### HDMI Wall Plate adapter

- Right Angle Type
- HDMI Female to HDMI Female
- Go to [www.toby.co.uk](http://www.toby.co.uk) for full specification



#### PIN ASSIGNMENT:

HDMI 19F	HDMI 19F	HDMI 19F	HDMI 19F
3	3 (TMDS Data 2-)	18	18 (+5V Power)
1	1 (TMDS Data 2+)	17	17 (Ground)
2	2 (TMDS Data 2 Shield)	15	15 (DDC Clock)
6	6 (TMDS Data 1-)	16	16 (DDC Data)
4	4 (TMDS Data 1+)	19	19 (Hot Plug Detect)
5	5 (TMDS Data 1 Shield)	13	13 (CEC)
9	9 (TMDS Data 0-)	14	14 (NC)
7	7 (TMDS Data 0+)	SHELL	SHELL
8	8 (TMDS Data 0 Shield)		
12	12 (TMDS Clock -)		
10	10 (TMDS Clock +)		
11	11 (TMDS Clock Shield)		

### Specification for TWPA-HDMI-RA1 Series

Overmould:	Black (standard) PVC UL94V-0 White Optional (Subject to MOQ)
HDMI Connectors:	19 Pin Male 30U"/AU Plated
Current Rating:	DC 1A
Withstanding Voltage:	300VDC, 10ms
Insulation Resistance:	10Mohm
Conductive Resistance:	2 Ohms

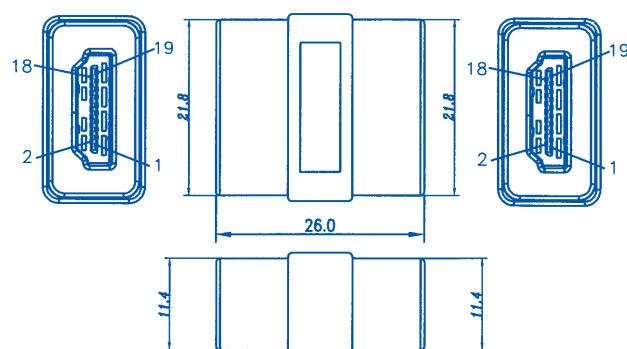
### Ordering Information for TWPA-HDMI-RA1 Series

Part Number	Adapter Type
<b>TWPA-HDMI-RA1</b>	Right Angle Type

## TWPA-HDMI-ST-1 Series

### HDMI Wall Plate adapter

- Straight Type
- HDMI Female to HDMI Female
- Go to [www.toby.co.uk](http://www.toby.co.uk) for full specification



#### PIN ASSIGNMENT:

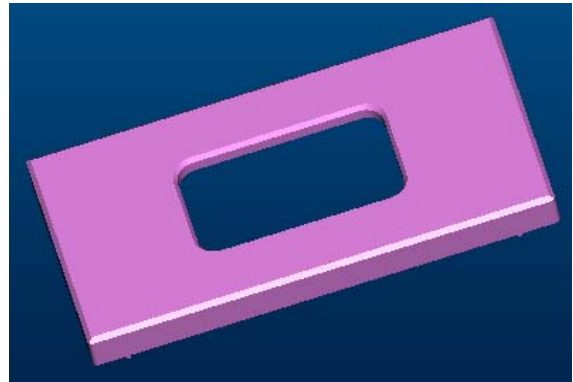
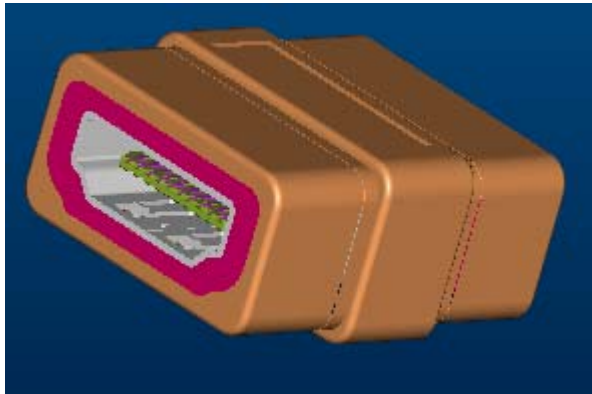
HDMI 19F	HDMI 19F	HDMI 19F	HDMI 19F
3	3 (TMDS Data 2-)	18	18 (+5V Power)
1	1 (TMDS Data 2+)	17	17 (Ground)
2	2 (TMDS Data 2 Shield)	15	15 (DDC Clock)
6	6 (TMDS Data 1-)	16	16 (DDC Data)
4	4 (TMDS Data 1+)	19	19 (Hot Plug Detect)
5	5 (TMDS Data 1 Shield)	13	13 (CEC)
9	9 (TMDS Data 0-)	14	14 (NC)
7	7 (TMDS Data 0+)	SHELL	SHELL
8	8 (TMDS Data 0 Shield)		
12	12 (TMDS Clock -)		
10	10 (TMDS Clock +)		
11	11 (TMDS Clock Shield)		

### Specification for TWPA-HDMI-ST1 Series

Overmould:	Black (standard) PVC UL94V-0 White Optional (Subject to MOQ)
HDMI Connectors:	19 Pin Male 30U"/AU Plated
Current Rating:	DC 1A
Withstanding Voltage:	300VDC, 10ms
Insulation Resistance:	10Mohm
Conductive Resistance:	2 Ohms

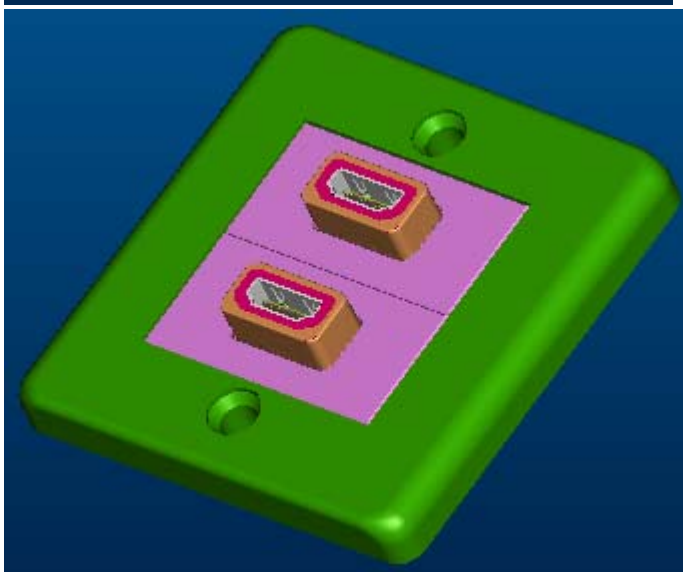
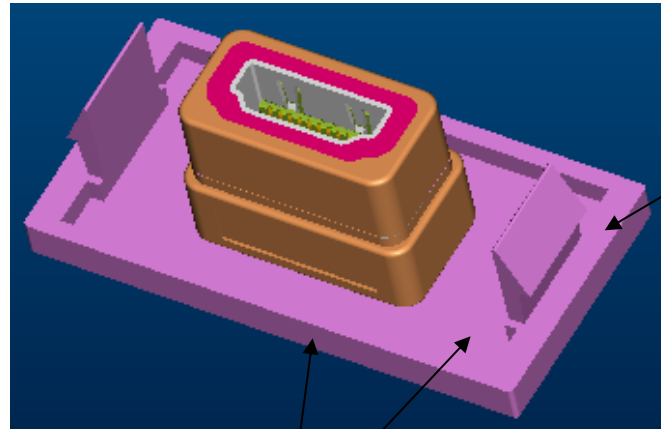
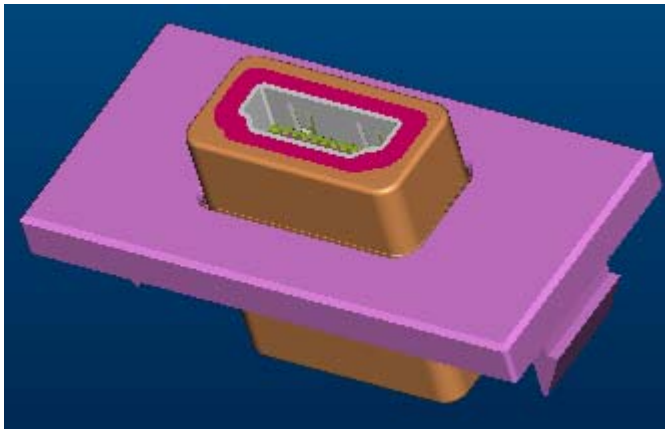
### Ordering Information for TWPA-HDMI-ST1 Series

Part Number	Adapter Type
<b>TWPA-HDMI-ST1</b>	Straight Type

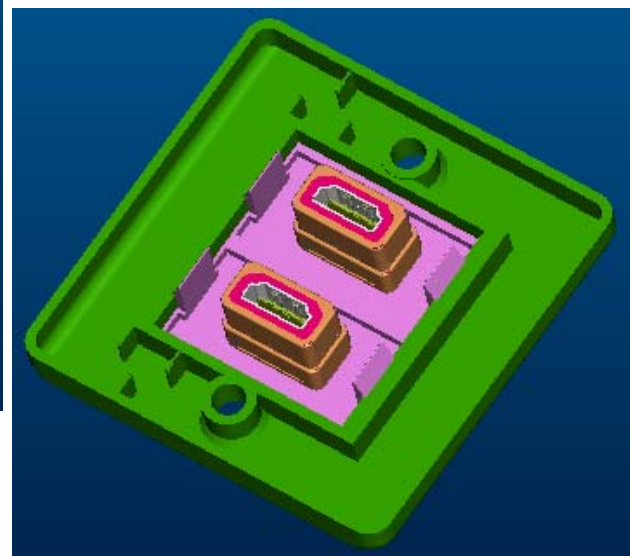


I. HDMI Female\*2 Adapter

Plane1



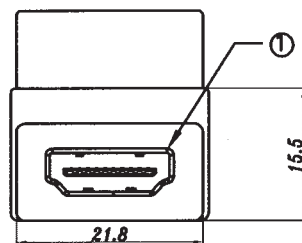
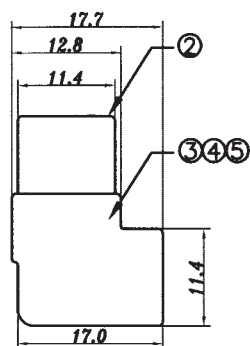
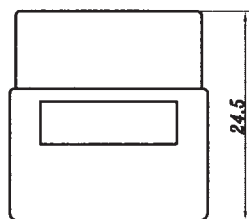
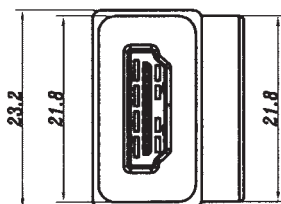
Paste all around






**TOBY**

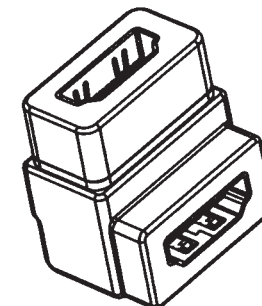
*The vital component*



HDMI 19F	HDMI 19F	HDMI 19F	HDMI 19F
3	3 (TMDS Data 2-)	18	18 (+5V Power)
1	1 (TMDS Data 2+)	17	17 (Ground)
2	2 (TMDS Data 2 Shield)	15	15 (DDC Clock)
6	6 (TMDS Data 1-)	16	16 (DDC Data)
4	4 (TMDS Data 1+)	19	19 (Hot Plug Detect)
5	5 (TMDS Data 1 Shield)	13	13 (CEC)
9	9 (TMDS Data 0-)	14	14 (NC)
7	7 (TMDS Data 0+)	SHELL	SHELL
8	8 (TMDS Data 0 Shield)		
12	12 (TMDS Clock -)		
10	10 (TMDS Clock +)		
11	11 (TMDS Clock Shield)		

1. CURRENT RATING: DC 1A
2. WITHSTANDING VOLTAGE:DC 300VDC,10ms
3. INSULATION RESISTANCE: 10Mohm
4. CONDUCTIVE RESISTANCE:2 Ohm

REV	ZONE	LTR	DESCRIPTION	DATE	REVISER	APPD
2.0				06/13'06	Mikev	



(2) SEQUENCE NO.  
01121(EX. 01001-01999):HDMI(FEMALE) TO  
HDMI(FEMALE) RIGHT ANGLE ADAPTER

(3) OUTER MOLDING COLOR CODES:  
BLACK


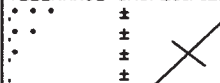



(4) PLATING OF SHELL :  
1 : SHELL PLATED GOLD

(5) SUFFIX NO.(2) :

B : WITHOUT LOGO

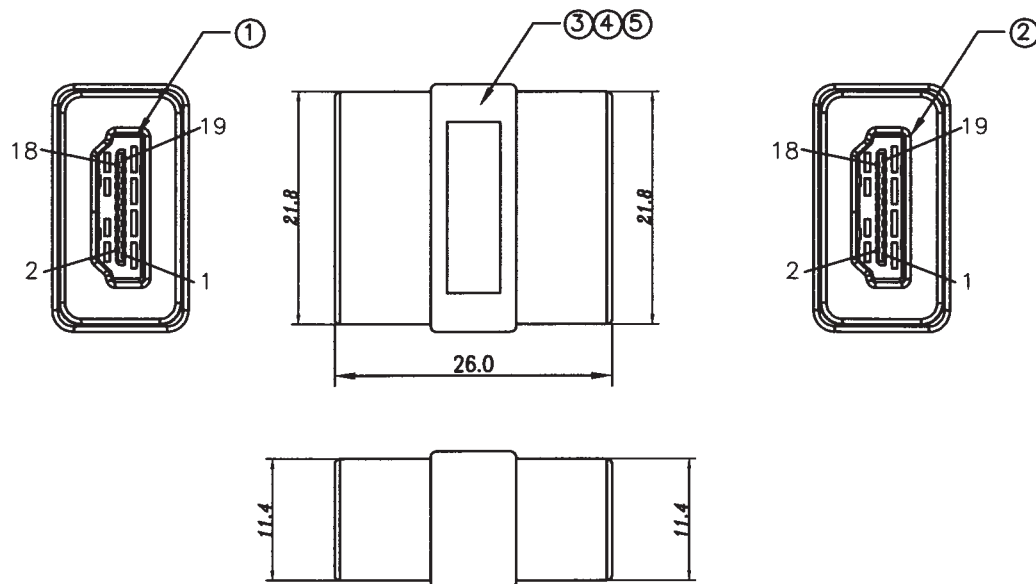
(6) SUFFIX NO.(2) :

A : FOR WALL PLATE

5.	COPPER FOIL	COPPER FOIL WIDTH:10mm T=18U"				
4.	PVC	PVC: 45Pa				
3.	PE	PE LOW DENSITY				
2.	HDMI CONN	HDMI CONN. 19P A TYPE FEMALE SOLDER TYPE WITH PCB				
1.	HDMI CONN	HDMI CONN. 19P A TYPE FEMALE SOLDER TYPE WITH COVER				
NO.	PART NAME	SPEC DESCRIPTION			REMARK	
<div>MATERIAL</div> <div></div>		TOLERANCE UNSPECIFIED				
		<div></div> <div>ANGLE</div>		<div></div>	SCALE NON	UNIT mm
<div>FINISH</div> <div></div>		DRAWN		NAME		SHEET
		DESIGNER		HDMI FEMALE ADAPTOR		1/1
		CHECKED		90° TYPE		
		APPROVED		DRAWING NO.		REV
		1901121		2		

CUSTOMER	CUST P/N	

REV	ZONE	LTR	DESCRIPTION	DATE	REVISER	APPD
2.0		△		06/09'06	Mikey	



(1) SERIES NUMBER:  
Adapter Series

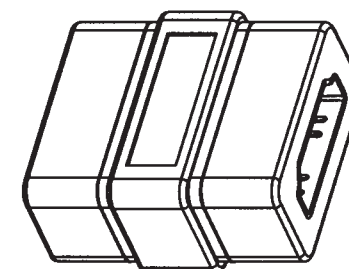
(2) SEQUENCE NO.  
01120(EX. 01001-01999):HDMI(FEMALE) TO  
HDMI(FEMALE) STRAIGHT ADAPTER

(3) OUTER MOLDING COLOR CODES:  
BLACK

(4) PLATING OF SHELL :  
1 : SHELL PLATED GOLD

(5) SUFFIX NO.(1) WITHOUT LOGO

(6) SUFFIX NO.(2) :  
o : STANDARD PACKING (PVC TRAY)  
A : FOR WALL PLATE



**TWPA-HDMI-ST1**

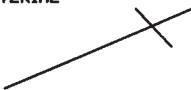





#### PIN ASSIGNMENT:

HDMI 19F	HDMI 19F	HDMI 19F	HDMI 19F
3	3 (TMDS Data 2-)	18	18 (+5V Power)
1	1 (TMDS Data 2+)	17	17 (Ground)
2	2 (TMDS Data 2 Shield)	15	15 (DDC Clock)
6	6 (TMDS Data 1-)	16	16 (DDC Data)
4	4 (TMDS Data 1+)	19	19 (Hot Plug Detect)
5	5 (TMDS Data 1 Shield)	13	13 (CEC)
9	9 (TMDS Data 0-)	14	14 (NC)
7	7 (TMDS Data 0+)	SHELL	SHELL
8	8 (TMDS Data 0 Shield)		
12	12 (TMDS Clock -)		
10	10 (TMDS Clock +)		
11	11 (TMDS Clock Shield)		

#### ELECTRICAL CHARACTER:

1. 100% OPEN & SHORT TEST
2. WITHSTANDING VOLTAGE:DC 300VDC,10ms
3. INSULATION RESISTANCE: 10Mohm
4. CONDUCTIVE RESISTANCE:2 Ohm

5.	COPPER FOIL	COPPER FOIL WIDTH:5mm T=18U"		
4.	PVC	PVC: 45Pa WHITE (OPTIONAL)		
3.	PE	PE LOW DENSITY		
2.	HDMI CONN	HDMI CONN. 19P A TYPE FEMALE STRADDLE TYPE		
1.	HDMI CONN	HDMI CONN. 19P A TYPE FEMALE SOLDER TYPE		
NO.	PART NAME	SPEC DESCRIPTION	REMARK	
MATERIAL		TOLERANCE UNSPECIFIED		
		± ± ± ± ±0.38 ± ± ANGLE ±	<div><div></div><div>SCALE</div><div>NON</div></div> <div>UNIT</div> <div>mm</div>	
FINISH		DRAWN:	NAME	
		DESIGNER:		HDMI FEMALE ADAPTOR 180° TYPE
		CHECKED:		
		APPROVED:	REV 2	