

QMSS-026-06.75-L-D-A

QMSS-052-06.75-L-D-A

QMSS SERIES

(0.635 mm) .025"

SHIELDED GROUND PLANE HEADER

SPECIFICATIONS

For complete specifications and recommended PCB layouts see www.samtec.com?QMSS

Insulator Material:

Liquid Crystal Polymer

Terminal, Ground Plane & Shield Material:

Phosphor Bronze

Plating:

Au over 50µ" (1.27 µm) Ni

(Tin on Ground Plane Tail)

Voltage Rating:

300 VAC mated with QFSS

Operating Temp:

-55°C to +125°C

RoHS Compliant: Yes

Processing:

Lead-Free Solderable: Yes

SMT Lead Coplanarity:

(0.10 mm) .004" max (026-078)

Board Stacking:

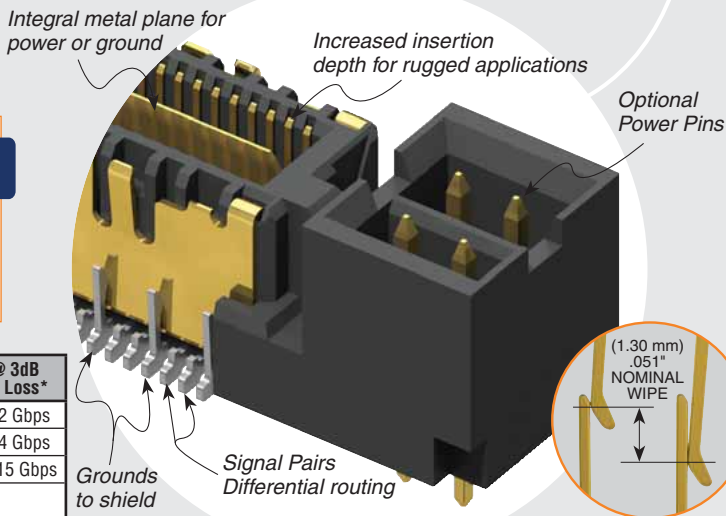
For applications requiring more than two connectors per board, contact ipg@samtec.com

Board Mates:

QFSS

RUGGEDIZED
BY SAMTEC

- Increased insertion depth
- Integral guide post



QMSS/QFSS 11 mm Stack Height	Type	Rated @ 3dB Insertion Loss*
Single-Ended Signaling	-D	6 GHz / 12 Gbps
Differential Pair Signaling	-D	7 GHz / 14 Gbps
Differential Pair Signaling	-D-DP	7.5 GHz / 15 Gbps

*Performance data includes effects of a non-optimized PCB.

Performance data for other stack heights and complete test data available at www.samtec.com?QMSS or contact sig@samtec.com

RECOGNITIONS

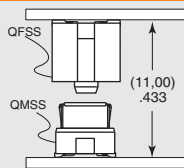
For complete scope of recognitions see www.samtec.com/quality



ALSO AVAILABLE (MOQ Required)

- Headers without Alignment Pins
 - 8 Power Pins/End
 - 4 or 8 Power Pins/End for (2.36 mm) .093" thick board
 - Guide Post
 - Edge Mount
 - 64 (-DP) and 104 pins per row
- Contact Samtec.

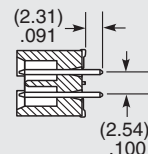
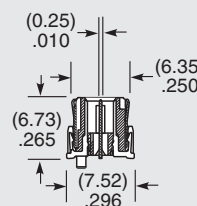
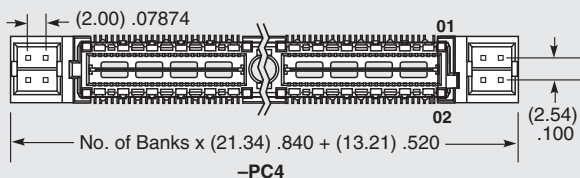
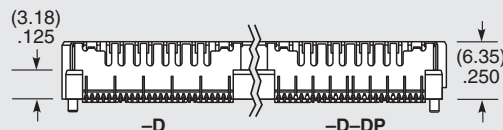
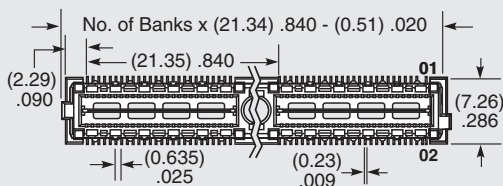
APPLICATION



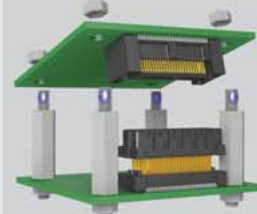
Note: Patented

Note: Some lengths, styles and options are non-standard, non-returnable.

QMSS	PINS PER ROW NO. OF PAIRS	06.75	PLATING OPTION	TYPE	A	OTHER OPTION
<p>-026, -052, -078 (52 total pins per bank 40 signals + 12 grounds to shield = -D)</p> <p>-016, -032, -048 (16 pairs per bank = -D-DP)</p>		<p>-L = 10µ" (0.25 µm) Gold on Signal Pins, Shield and Ground Plane (Tin on Signal Pin tails, and Ground Plane tails)</p>		<p>-D = Single-Ended</p> <p>-D-DP = Differential Pair</p>		<p>-K = (5.50 mm) .217" DIA Polyimide film Pick & Place Pad (N/A with -PC4)</p> <p>-PC4 = 4 Power Pins/End (N/A with -A)</p>



OTHER SOLUTIONS



See SO Series for precision machined standoffs.