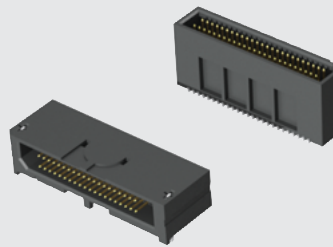


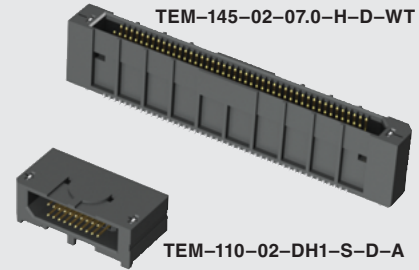


TEMS-125-02-03.0-H-D



TEM-120-02-DH1-S-D-A

TEM-145-02-07.0-H-D-WT



TEM-110-02-DH1-S-D-A

TEM, TEMS, TEM-DH SERIES

(0,80 mm) .0315"

MICRO TIGER EYE™ HEADER

TEM, TEM-DH Mates with:
SEM, SEML

TEMS Mates with:
SEMS

SPECIFICATIONS

For complete specifications and recommended PCB layouts see www.samtec.com?TEM or www.samtec.com?TEMS

Insulator Material: Black Liquid Crystal Polymer
Terminal Material: Phosphor Bronze
Plating: Au or Sn over 50µ" (1,27 µm) Ni
Operating Temp Range: -55°C to +125°C
Current Rating: 2.6 A per pin (1 pin powered per row)
RoHS Compliant: Yes

Processing:
Lead-Free Solderable: Yes
SMT Lead Coplanarity: (0,10 mm) .004" max

RECOGNITIONS

For complete scope of recognitions see www.samtec.com/quality



FILE NO. E111594

TYPE STRIP	1	NO. PINS PER ROW	02	STACK HEIGHT	PLATING OPTION	D	OPTION	OTHER OPTION
<p>TEM = Tiger Eye™ Strip</p> <p>TEMS = Tiger Eye™ Slim Strip</p>		<p>05, 10, 15, 20, 25 30, 35, 40, 45, 50 (TEM only) (Standard sizes)</p>		<p>-03.0 = 6 mm Stack Height</p> <p>-04.0 = 7 mm Stack Height</p> <p>-07.0 = 10 mm Stack Height</p>	<p>-FG = Gold Flash</p> <p>-G = 10µ" (0,25 µm) Gold on contact, Gold Flash on tail</p> <p>-H = 30µ" (0,76 µm) Gold on contact, Gold Flash on tail</p>		<p>Leave blank for TEMS</p> <p>-A = Alignment Pin (Not available with -LC or -WT)</p> <p>-LC = Locking Clip (Not available with -A or -WT) (Manual placement required)</p> <p>-WT = Weld Tab (Not available with -A or -LC)</p>	<p>-K = (5,50 mm) .217" DIA Polyimide film Pick & Place Pad (Required for TEMS)</p> <p>-TR = Tape & Reel (Required for TEMS)</p>

TEMS: (No. of Positions x (0,80) .0315) x (0,24) .009, (0,80) .0315, (5,50) .217

TEM: (No. of Positions x (0,80) .0315) + (9,00) .354, (No. of Positions x (0,80) .0315) + (7,00) .276, (0,25) .010, (5,00) .197, (3,70) .146

STACK HEIGHT	A	MATED HEIGHT* (WHEN MATED WITH SEM/SEMS)
-03.0	(5,610) .2209	6 mm
-04.0	(6,610) .2602	7 mm
-07.0	(9,610) .3783	10 mm

*Processing conditions will affect mated height.

28+
Gbps

E.L.P.™
 EXTENDED LIFE PRODUCT
 10 year Mixed Flowing Gas with 30µ" Gold
 Call Samtec for maximum mated cycles

OTHER SOLUTIONS

- Latching option: See TEM-L1 in Discrete Wire Cable section.
- Board Stacking: See SFM, TFM Series
- Cable Assemblies: See SFSD, TFSD, SESDT Series Contact Samtec.

ALSO AVAILABLE (MOQ Required)

- Other sizes
- Other platings

Contact Samtec.

Note: Some sizes, styles and options are non-standard, non-returnable.

TEM	1	NO. OF POSITIONS	02	DH1	PLATING OPTION	D	OPTION
		<p>10, 15, 20, 25, 30, 35, 40, 45, 50 (Standard sizes)</p>			<p>-F = Gold Flash on contact, Matte Tin on tail</p> <p>-L = 10µ" (0,25 µm) Gold on contact, Matte Tin on tail</p> <p>-S = 30µ" (0,76 µm) Gold on contact, Matte Tin on tail</p>		<p>-A = Alignment Pin</p>

DH1: (No. of Positions x (0,80) .0315) + (9,00) .354, (8,50) .335, (3,70) .146

TEM: (No. of Positions x (0,80) .0315) + (4,00) .1575, (6,00) .236, (1,21) .048, (0,80) .0315, (0,25) .010, (0,30) .012, (No. of Positions x (0,80) .0315) + (7,00) .276, (1,40) .055, (6,28) .247, (7,99) .315, (1,27) .050 DIA, (0,50) .0197, (0,87) .034

-A OPTION