



## Part Change Notice

1/15/2025

**Company: KYCON, Inc.**  
**305 Digital Dr.**  
**Morgan Hill, CA 95037 USA**  
**408-494-0330**

Re: K86X-xA-xxS & K86X-xA-xxP series

**Options affected:**

- No hardware
- K, KJ

Please note that we have retooled the above series due to worn tooling. Please find attached redline drawings that detail a few specific changes. We will continue to ship original tooled parts until stock is depleted.

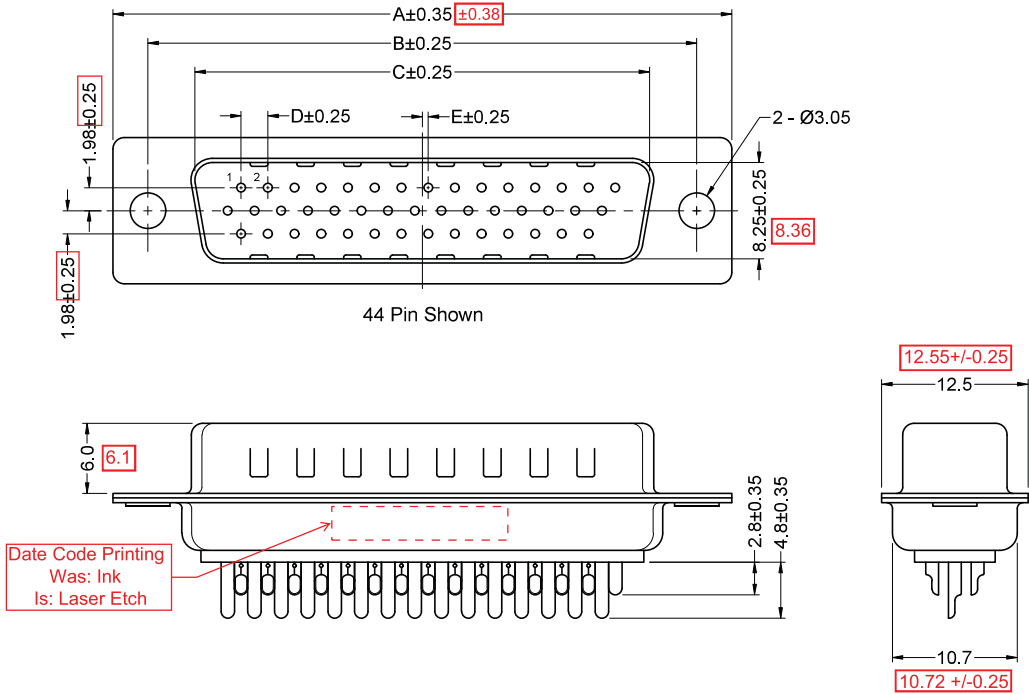
Effective date code for new tooling is **2442YN**

Please contact your sales representative with any questions or if additional documentation is required.

Signature: \_\_\_\_\_

Name: Jill Scarnecchia      Phone: 408-494-0330

Compared to K86X-xA-xxP Rev. Ax  
(Dimensions in red are "was" values.)



No. Of Contacts & (Shell Size)	Dimensions				
	A	B	C	D	E
15 (E)	30.81	24.99	16.92	2.29	0.25
26 (A)	39.14	33.32	25.25	2.29	0.50 <span>0.51</span>
44 (B)	53.04	47.04	38.96	2.29	0.50 <span>0.51</span>
62 (C)	69.40 <span>69.32</span>	63.50	55.42	2.41	0.60 <span>0.58</span>

Part Number	Contact Area Platng
K86X-xA-xxP	Gold Flash (Standard)
K86X-xA-xxP-15	15u" Gold (15 Option)
K86X-xA-xxP-30	30u" Gold (30 Option)

Materials and Finish

Shell: Steel, Nickel plated  
Insulator: PBT thermoplastic with glass-fiber reinforcement, UL94V-0 rated  
Color: Black  
Contact Material: Brass  
Contact Plating Options:  
Standard: Gold flash on mating end, Matte tin on termination end, Nickel underplate on entire contact  
15 Option: 15u" gold on mating end, Matte tin on termination end, Nickel underplate on entire contact  
30 Option: 30u" gold on mating end, Matte tin on termination end, Nickel underplate on entire contact

Electrical Specifications

Rated Current: 1.5A  
Rated Voltage: 30Vac  
Insulation Resistance: More than 1000 Megohms at 500V DC  
Contact Resistance: 13 30 Milliohms Max.  
Dielectric Withstanding Voltage: 1000 500V for 1 minute.

Mechanical Specifications

Operating Temperature: -55°C to +105°C

Tolerances
X.X $\pm 0.25$
X.XX $\pm 0.15$
Unless Stated Otherwise

RoHS COMPLIANT



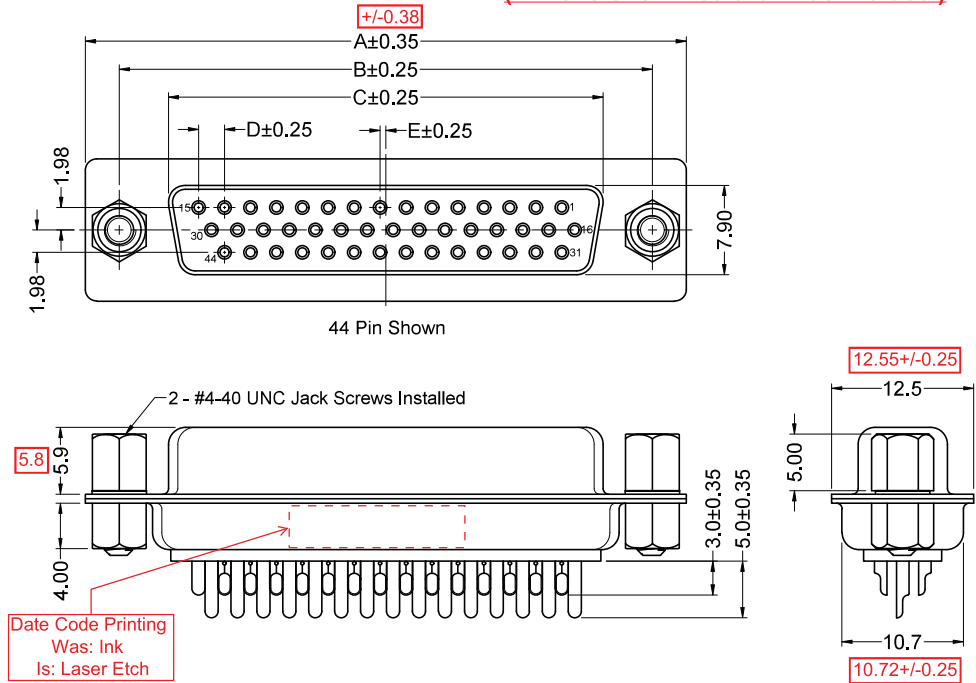
REV.	DATE	DESCRIPTION	REV. BY	CHK. BY	DRAWN BY	DATE
B0	12/16/24	ECO #24-026, Series Spec.	C. Kelleher	C. Kelleher	C. Kelleher	11/11/2024

K86X-xA-xxP

D-Sub, HD, Vertical Mount, RoHS Compliant  
Male, With Precision Formed Solder Cups



Compared to K86X-xA-xxS-KJ Rev. Ax  
(Dimensions in red are "was" values.)



No. Of Contacts & (Shell Size)	Dimensions				
	A	B	C	D	E
15 (E)	30.81	24.99	16.33	2.29	0.25
26 (A)	39.14	33.32	24.75	2.29	0.50
44 (B)	53.04	47.04	38.38	2.29	0.50
62 (C)	69.40	63.50	54.80	2.41	0.60

Part Number	Contact Area Platng
K86X-xA-xxS-KJ	Gold Flash (Standard)
K86X-xA-xxS-KJ15	15u" Gold (15 Option)
K86X-xA-xxS-KJ30	30u" Gold (30 Option)

**Materials and Finish**

Shell: Steel, Nickel plated  
Insulator: PBT thermoplastic with glass-fiber reinforcement, UL94V-0 rated  
Color: Black  
Bushing: Brass, Nickel plated  
Jack Screw: Brass, Nickel plated  
Contact Material: Brass  
Contact Plating Options:  
Standard: Gold flash on mating end, Matte tin on termination end, Nickel underplate on entire contact  
15 Option: 15u" gold on mating end, Matte tin on termination end, Nickel underplate on entire contact  
30 Option: 30u" gold on mating end, Matte tin on termination end, Nickel underplate on entire contact

**Electrical Specifications**

Rated Current: 1.5A  
Rated Voltage: 30Vac  
Insulation Resistance:  
More than 1000 Megohms at 500V DC  
Contact Resistance:  
30 Milliohms Max.  
Dielectric Withstanding Voltage:  
500V for 1 minute.

**Mechanical Specifications**

Operating Temperature:  
-55°C to +105°C

75

Tolerances
X.X ± 0.25
X.XX ± 0.15
Unless Stated Otherwise

RoHS COMPLIANT

cALus  
E140125

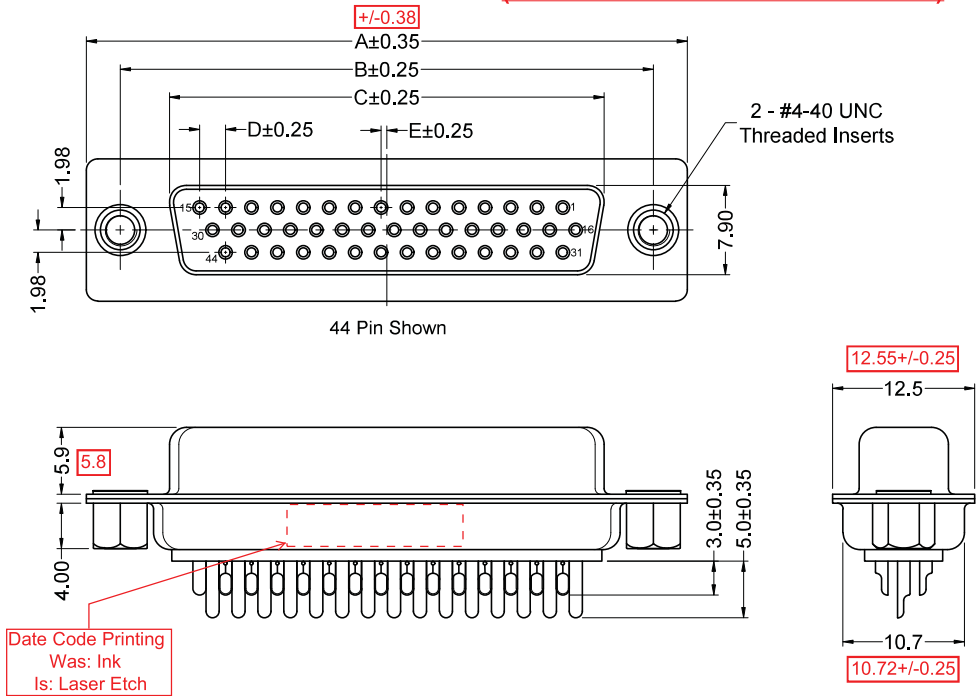
REV.	DATE	DESCRIPTION	REV. BY	CHK. BY	DRAWN BY	DATE
B0	11/26/24	ECO #24-026, Series Spec	C. Kelleher	C. Kelleher	C. Kelleher	11/26/24

K86X-xA-xxS-KJ

D-Sub, HD, Vertical Mount, RoHS Compliant  
Female, W/ Solder Cups, Bushings, Jackscrews



Compared to K86X-xA-xxS-K Rev. Ax  
(Dimensions in red are "was" values.)



No. Of Contacts & (Shell Size)	Dimensions				
	A	B	C	D	E
15 (E)	30.81	24.99	16.33	2.29	0.25
26 (A)	39.14	33.32	24.75	2.29	0.50
44 (B)	53.04	47.04	38.38	2.29	0.50
62 (C)	69.40	63.50	54.80	2.41	0.60

Part Number	Contact Area Plating
K86X-xA-xxS-K	Gold Flash (Standard)
K86X-xA-xxS-K15	15u" Gold (15 Option)
K86X-xA-xxS-K30	30u" Gold (30 Option)

Materials and Finish

Shell: Steel, Nickel plated  
Insulator: PBT thermoplastic with glass-fiber reinforcement, UL94V-0 rated  
Color: Black  
Bushing: Brass, Nickel plated  
Contact Material: Brass  
Contact Plating Options:  
Standard: Gold flash on mating end, Matte tin on termination end, Nickel underplate on entire contact  
15 Option: 15u" gold on mating end, Matte tin on termination end, Nickel underplate on entire contact  
30 Option: 30u" gold on mating end, Matte tin on termination end, Nickel underplate on entire contact

Electrical Specifications

Rated Current: 1.5A  
Rated Voltage: 30Vac  
Insulation Resistance:  
More than 1000 Megohms at 500V DC  
Contact Resistance:  
13 30 Milliohms Max.  
Dielectric Withstanding Voltage:  
1000 500V for 1 minute.

Mechanical Specifications

Operating Temperature:  
-55°C to +105°C

75

Tolerances
X.X ± 0.25
X.XX ± 0.15
Unless Stated Otherwise

RoHS COMPLIANT

UL E140125

REV.	DATE	DESCRIPTION	REV. BY	CHK. BY	DRAWN BY	DATE
B0	11/26/24	ECO #24-026, Series Spec	C. Kelleher	C. Kelleher	C. Kelleher	11/26/24

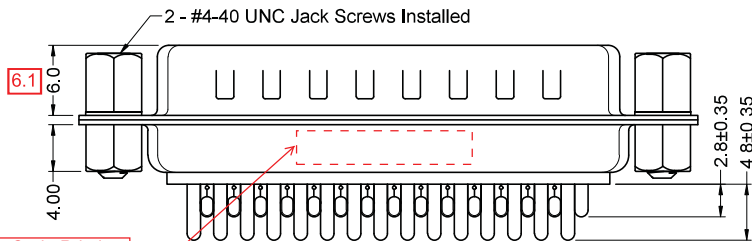
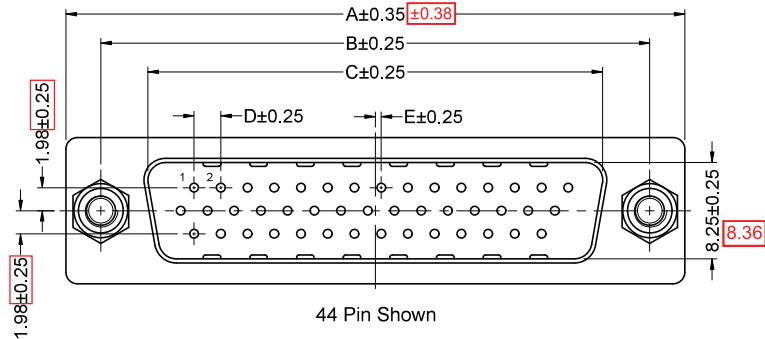
K86X-xA-xxS-K

D-Sub, HD, Vertical Mount, RoHS Compliant  
Female, W/ Solder Cups, Threaded Bushings



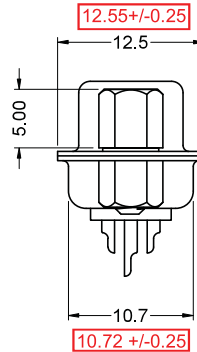


Compared to K86X-xA-xxP-KJ Rev. Ax  
(Dimensions in red are "was" values.)



Date Code Printing  
Was: Ink  
Is: Laser Etch

No. Of Contacts & (Shell Size)	Dimensions				
	A	B	C	D	E
15 (E)	30.81	24.99	16.92	2.29	0.25
26 (A)	39.14	33.32	25.25	2.29	0.50
44 (B)	53.04	47.04	38.96	2.29	0.50
62 (C)	69.40	63.50	55.42	2.41	0.60



Materials and Finish

Shell: Steel, Nickel plated  
Insulator: PBT thermoplastic with glass-fiber reinforcement, UL94V-0 rated  
Color: Black  
Bushing: Brass, Nickel plated  
Jack Screw: Brass, Nickel plated  
Contact Material: Brass  
Contact Plating Options:  
Standard: Gold flash on mating end, Matte tin on termination end, Nickel underplate on entire contact  
15 Option: 15u" gold on mating end, Matte tin on termination end, Nickel underplate on entire contact  
30 Option: 30u" gold on mating end, Matte tin on termination end, Nickel underplate on entire contact

Electrical Specifications

Rated Current: 1.5A  
Rated Voltage: 30Vac  
Insulation Resistance:  
More than 1000 Megohms at 500V DC  
Contact Resistance:  
13 30 Milliohms Max.  
Dielectric Withstanding Voltage:  
1000 500V for 1 minute.

Mechanical Specifications

Operating Temperature:  
-55°C to +105°C

Part Number	Contact Area Platng
K86X-xA-xxP-KJ	Gold Flash (Standard)
K86X-xA-xxP-KJ15	15u" Gold (15 Option)
K86X-xA-xxP-KJ30	30u" Gold (30 Option)

Tolerances
X.X ± 0.25
X.XX ± 0.15
Unless Stated Otherwise

RoHS COMPLIANT



REV.	DATE	DESCRIPTION	REV. BY	CHK. BY	DRAWN BY	DATE
B0	11/20/24	ECO #24-026, Series Spec.	C. Kelleher	C. Kelleher	C. Kelleher	11/20/2024

K86X-xA-xxP-KJ

D-Sub, HD, Vertical Mount, RoHS Compliant  
Male, W/ Solder Cups, Bushings, Jackscrews



