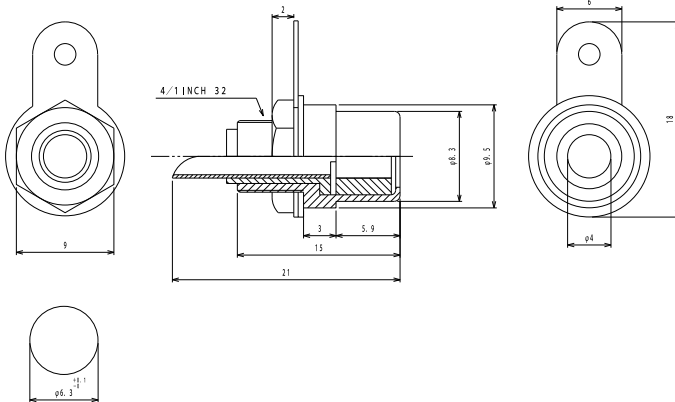


## RCA connectors



RCA chassis socket acc. to JEITA RC-5231, with solder eyes,  
for front side mounting



#### Environmental conditions

Temperature range -20 °C/+70 °C

#### Materials

Insulating body	ABS, HB according to UL94
Inner contact	Cu alloy, nickel-plated
Outer contact	CuZn, nickel-plated
Lötkontakt	steel, nickel-plated
Hexagonal nut	CuZn, nickel-plated
Washer	steel, nickel-plated

#### Mechanical data

Mating cycles	≥ 500
Insertion force	≤ 30 N
Withdrawal force	3–30 N

#### Electrical data (at T<sub>amb</sub> 20 °C)

Contact resistance	≤ 30 mΩ
Rated current	1 A
Rated voltage	12 V DC
Rated impulse voltage	250 V/60 s
Insulation resistance	≥ 100 MΩ

#### Associated products

Counterparts		
☞ 1570 01	☞ 1573 01 V	☞ STO 1
☞ STO 2	☞ XSTO 1	



15

BTO 1

www.toby.co.uk

Designation	Pole Number	PU (Pieces)	MDQ (Pieces)
BTO 1 ROT (red)	2	200	600
BTO 1 SCHWARZ (black)	2	200	600

**Packaging:**

in bulk, in a cardboard box or a plastic bag