

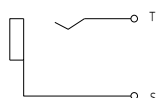
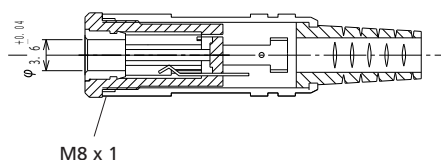
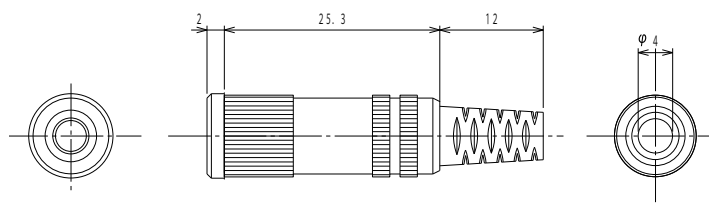
## Jack connectors



Jack socket acc. to JIS C 6560 JC35J2A, 3.5 mm, 2 poles/  
mono, straight version, with metal housing, bend  
protection and solder terminals

15

1522 03



#### Environmental conditions

Temperature range -10 °C/+50 °C

#### Materials

Insulating body PA, HB according to UL94  
Contact Cu alloy, nickel-plated  
Housing Cu alloy, nickel-plated  
Bend protection sleeve PVC

#### Mechanical data

Mating cycles 3000  
Insertion force 4–20 N<sup>1</sup>  
Withdrawal force 4–20 N<sup>1</sup>

<sup>1</sup> measured with a gauge plug

#### Connectable conductors for solder area

Cable diameter 4 mm

#### Electrical data (at T<sub>amb</sub> 20 °C)

Contact resistance ≤ 50 mΩ  
Rated current 1 A  
Rated voltage 12 V DC  
Rated impulse voltage 500 V/60 s  
Insulation resistance ≥ 100 MΩ

#### Associated products

Counterparts  
☞ 1532 06 ☞ KLS 2 ☞ KLS 22  
☞ WKLS 2



15

1522 03

www.toby.co.uk

Designation	Pole Number	PU (Pieces)	MDQ (Pieces)
1522 03	2	100	500

**Packaging:**

in bulk, in a cardboard box or a plastic bag