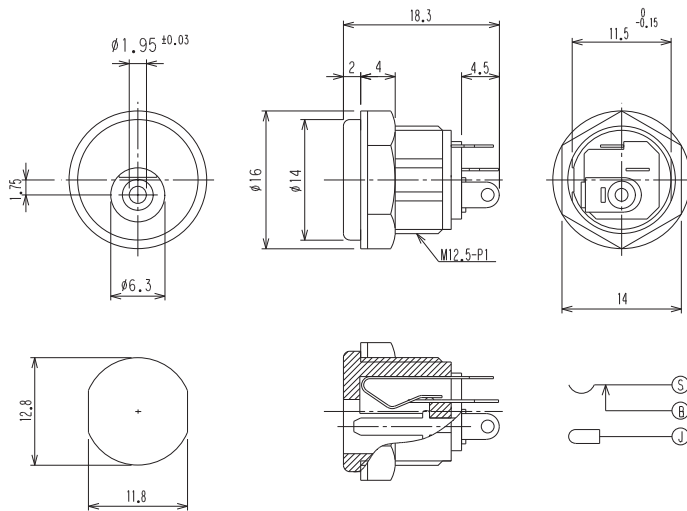


Power supply connectors



Power supply chassis socket, straight version, with break contact and solder eyes, for front side mounting



*a port in mounting plate

Environmental conditions

Temperature range -20 °C/+70 °C

Materials

Insulating body ABS, HB according to UL94
Contact CuZn/CuSn, nickel-plated/silver-plated
Insulation PBT GF (may be PF in a transitional phase)
Hexagonal nut PA

Mechanical data

Diameter opening 6.3 mm
Diameter center pin 1.95 mm
Mating cycles 5000¹
Insertion force ≤ 30 N¹
Withdrawal force 3–30 N¹

¹ measured with a gauge plug

Electrical data (at T_{amb} 20 °C)

Contact resistance ≤ 30 mΩ
Rated current 0.5 A
Rated voltage 12 V DC
Rated impulse voltage 500 V/60 s
Insulation resistance 100 MΩ

Associated products

Counterparts
☞ 1633 02 ☞ 1633 03 ☞ NES/J 21
☞ NES/J 21 W ☞ NES/J 210 ☞ XNES/J 210

16

NEB/J 21 C



Designation	Pole Number	PU (Pieces)	MDQ (Pieces)
NEB/J 21 C	2	250	750

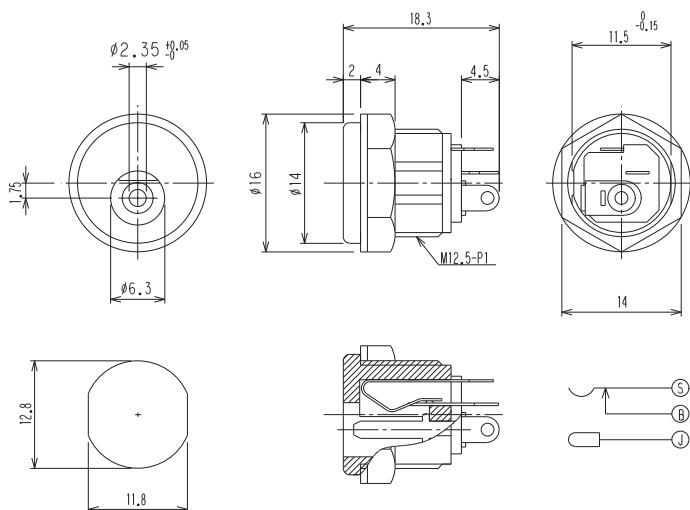
Packaging:

in bulk, in a cardboard box or a plastic bag

Power supply connectors



Power supply chassis socket, straight version, with break contact and solder eyes, for front side mounting



*a port in mounting plate

Environmental conditions

Temperature range -20 °C/+70 °C

Materials

Insulating body ABS, HB according to UL94
Contact CuZn/CuSn, nickel-plated/silver-plated
Insulation PBT GF (may be PF in a transitional phase)
Hexagonal nut PA

Mechanical data

Diameter opening 6.3 mm
Diameter center pin 2.35 mm
Mating cycles 5000¹
Insertion force ≤ 30 N¹
Withdrawal force 3–30 N¹

¹ measured with a gauge plug

Electrical data (at T_{amb} 20 °C)

Contact resistance ≤ 30 mΩ
Rated current 1 A
Rated voltage 12 V DC
Rated impulse voltage 500 V/60 s
Insulation resistance 100 MΩ

Associated products

Counterparts
☞ 1633 04 ☞ 1634 02 ☞ NES/J 25
☞ NES/J 250 ☞ XNES/J 250

16

NEB/J 25 C



Designation	Pole Number	PU (Pieces)	MDQ (Pieces)
NEB/J 25 C	2	250	750

Packaging:

in bulk, in a cardboard box or a plastic bag