

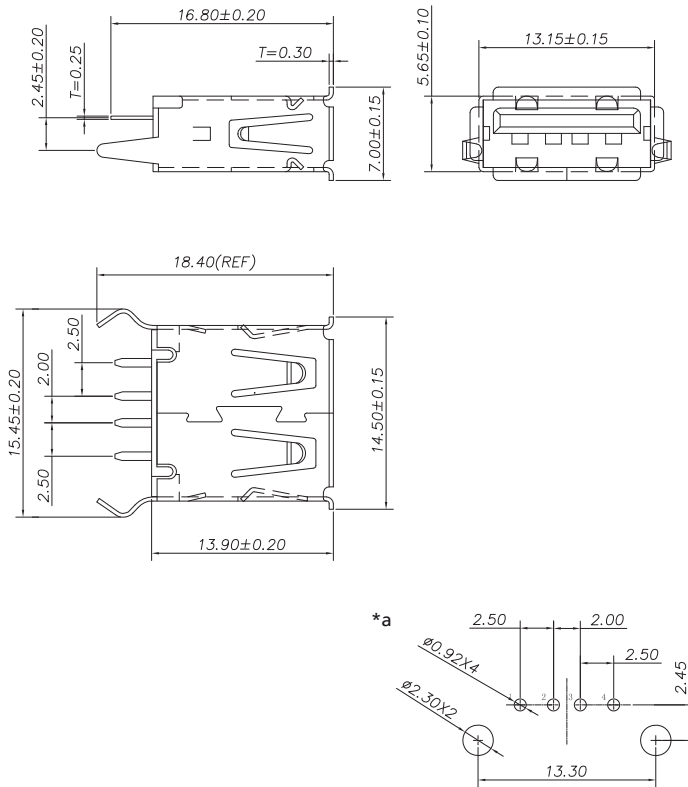
## USB and IEEE 1394 connectors



USB 2.0 chassis socket type A, upright version, for printed circuit boards

24

2410 11



\*a printed circuit board layout, components side view

#### Environmental conditions

Temperature range -45 °C/+85 °C

#### Materials

Insulating body PBT, V-0 according to UL94  
Contact spring CuZn, gold-plated  
Housing Steel, nickel-plated

#### Mechanical data

Mating cycles 1500  
Insertion force ≤ 35 N  
Withdrawal force ≥ 10 N

#### Electrical data (at T<sub>amb</sub> 20 °C)

Contact resistance ≤ 30 mΩ  
Rated current ≤ 1.5 A  
Rated voltage 30 V DC  
Rated impulse voltage 500 V/60 s  
Insulation resistance ≥ 1 GΩ

#### Associated products

Counterparts  
↗ 2410 07 ↗ 2410 08 ↗ 2480  
↗ 2482

24

2410 11

[www.toby.co.uk](http://www.toby.co.uk)

Designation	Pole Number	PU (Pieces)	MDQ (Pieces)
2410 11	4	100	500

**Packaging:**

in a tray