

15

1502 02



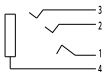
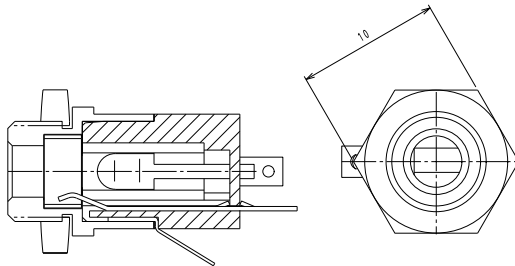
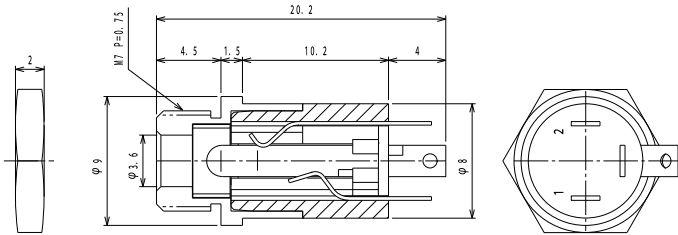
Jack connectors



Jack chassis socket according to JEITA RC-5325A JC35C4A,
3.5 mm, 4 poles/stereo, upright version, with solder eyes,
for back side mounting

15

1502 02



Environmental conditions

Temperature range -10 °C/+50 °C

Materials

Insulating body	PBT GF, V-0 according to UL94
Contact spring	Cu alloy, nickel-plated/gold-plated
Insulation	PVC
Housing	Cu alloy, nickel-plated
Hexagonal nut	steel, nickel-plated

Mechanical data


Mating cycles	≥ 5000
Insertion force	3–30 N (4–40 N initial value) ¹
Withdrawal force	3–30 N (4–40 N initial value) ¹

¹ measured with a gauge plug

Electrical data (at T_{amb} 20 °C)

Contact resistance	≤ 50 mΩ
Rated current	1 A
Rated voltage	12 V DC
Rated impulse voltage	500 V/60 s
Insulation resistance	≥ 100 MΩ

Associated products

Counterparts
 1532 02

15

1502 02



Designation	Pole Number	PU (Pieces)	MDQ (Pieces)
1502 02	4	500	500

Packaging:

in bulk, in a cardboard box or a plastic bag