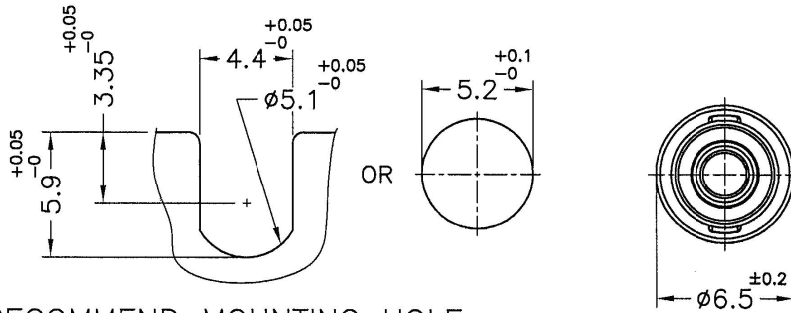
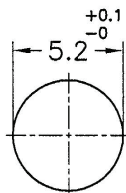
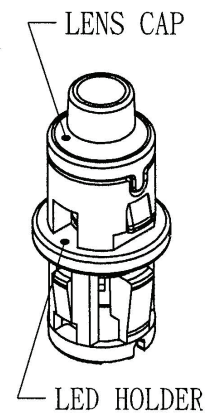
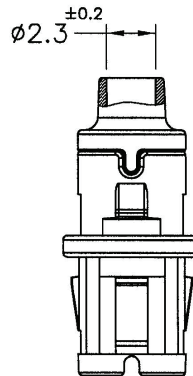
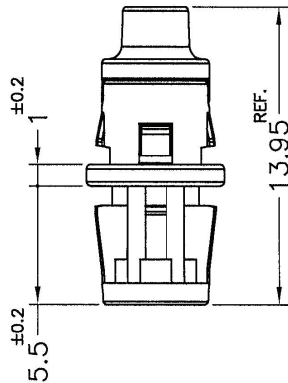


Patented Product

REVISIONS			
REV	DESCRIPTION	DATE	BY



RECOMMEND MOUNTING HOLE $\begin{matrix} +0 \\ -0.05 \end{matrix}$
 RECOMMEND THICKNESS: 0.8mm



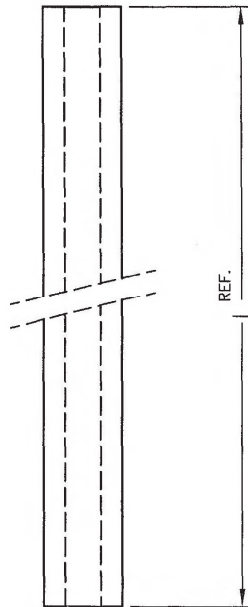
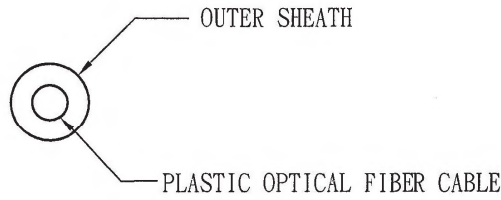
RECOMMEND MOUNTING HOLE
 RECOMMEND THICKNESS: 0.8mm

- NOTE: 1. MADE OF EQUIVALENT MATERIAL.
 2. SUITABLE FOR $\phi 3$ LED WITH VISOR AND 2PIN, 3PIN.
 3. FIT TO PART NUMBER FLB-3BK-... (FIBRE CABLE)
 4. SLIGHT DEFORMED IS NORMAL STATUS.

TOBY ELECTRONICS LTD toby.co.uk sales@toby.co.uk				TITLE LED OPTICAL FIBER HOLDER		SPEC. DWG.	
				LENS CAP MATERIAL / COLOR PA66 UL94V-2 / BLACK		DATE 2017.11.13	
PART NUMBER PMR-12F		DRAWING NUMBER PMR-12F		LED HOLDER MATERIAL / COLOR PA66 UL94V-2 / BLACK		DRAWN K.W	
SIZE A4		SCALE 3:1		FINISH		CHECK 	
UNIT mm		REV A		UNLESS OTHERWISE SPECIFIED TOLERANCE SEE ABOVE		APPROVED 	

FLEX FIBRE FOR FLK-xxx-xxx-X

REVISIONS			
REV	DESCRIPTION	DATE	BY



PART NO.	L=MM
FLB-3BK-	XX mm

	DIM	MATERIAL
OUTER SHEATH	$\phi 2.2^{\pm 0.07}$	PE/BLACK
FIBER TYPE CORE	$\phi 1.0^{\pm 0.2}$	POLYMETHY1 METHACRYLATE(PMMA)
FIBER TYPE CLAD		FLUORINATED POLYMER

NOTE : TRIMMED BY HAND, IT MIGHT NOT BE SMOOTH.

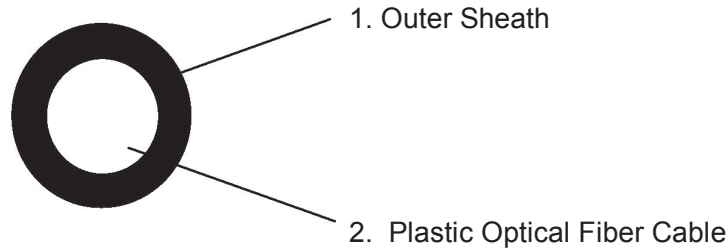
TOBY ELECTRONICS LTD				TITLE OPTICAL FIBER LINE		SPEC. DWG.	
				CORE MATERIAL SEE ABOVE		DATE 2009.08.03	
sales@toby.co.uk toby.co.uk				CLADDING MATERIAL SEE ABOVE		DRAWN HANK	
				JACKET MATERIAL SEE ABOVE		CHECK 	
PART NUMBER FLB-3BK-XX		DRAWING NUMBER FLB-3BK-XX		UNLESS OTHERWISE SPECIFIED TOLERANCE SEE ABOVE		APPROVED 	
SIZE A4	SCALE 5:1	UNIT mm	REV A				

Plastic Optical Fiber Simplex OD2.2



FLB-3BK-xx: Specifications

Simplex Cord



Fiber types	Core	Polymethyl Methacrylate (PMMA)
	Clad	Fluorinated Polymer
Diameter,mm		1.0mm± 0.06mm
Attenuation at 650nm*		0.2 dB/m
Outer diameter ,mm		2.2mm± 0.1mm
Outer sheath		PE
Sheath Color		BLACK
Numerical Aperture	N/A	0.5
Fiber Minimum Bend Radius		> 25mm
Tensile Strength (YIELD POINT)		64N
Cable Length		5.25Km
Cable weight		Approx. 23kg
Storage, installation, operating temperature		-20~+70°C

*Attenuation losses may be effected on cut lengths.

TOBY ELECTRONICS LTD

sales@toby.co.uk | toby.co.uk

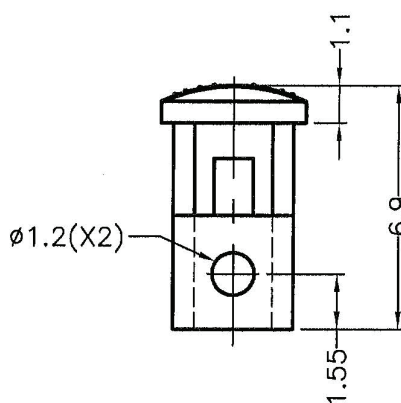
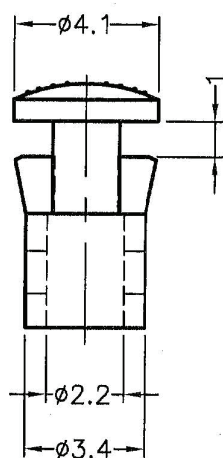
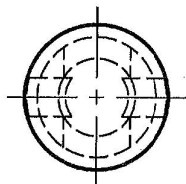
DIM.	TOL
5mm DOWN	±0.2
5~20mm	±0.3
20~40mm	±0.4
40~60mm	±0.5
60~100mm	±0.8
100mm UP	±1.0

LENS FOR FLK-xxx-xxx-X

REVISIONS			
REV	DESCRIPTION	DATE	BY



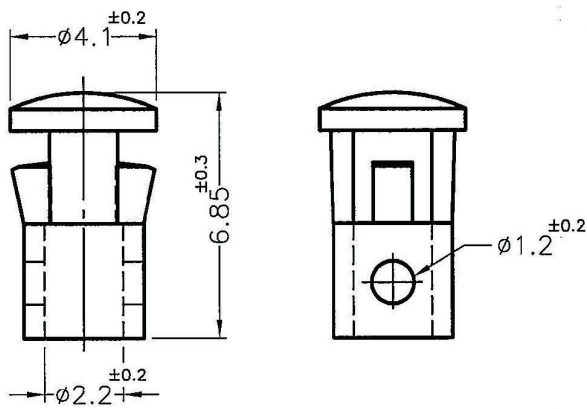
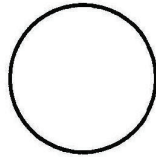
www.toby.co.uk



HOLE IN CHASSIS $\phi 3.5\text{mm}$
CHASSIS THICKNESS 1.0mm

NOTE: All measurement does not include gate which raises under 0.3mm.

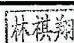

<p>TOBY ELECTRONICS LTD toby.co.uk sales@toby.co.uk</p>				TITLE	LED CAP	SPEC. DWG	
				MATERIAL	PC UL94V-2	DATE	2004.01.16
				FINISH	BRIGHT	DRAWN	S.J.C.
				COLOR	NATURAL	CHECK	
PART NUMBER	LEU-1	DRAWING NUMBER	LEU-1	UNLESS OTHERWISE SPECIFIED TOLERANCE	SEE ABOVE	APPROVED	
SIZE	A4	SCALE	5:1	UNIT	mm	REV	A



HOLE IN CHASSIS ϕ 3.5mm
THICKNESS 0.8mm

NOTE: 1. SHRINKING IS NORMAL STATUS.
2. MADE OF EQUIVALENT MATERIAL.

TOBY ELECTRONICS LTD
toby.co.uk | sales@toby.co.uk

PROPRIETARY AND CONFIDENTIAL THIS DRAWING IS THE SOLE PROPERTY OF TOBY ELECTRONICS MANUFACTURER. ANY REPRODUCTION IN PART OR AS A WHOLE WITHOUT THE WRITTEN PERMISSION OF TOBY ELECTRONICS MANUFACTURER IS PROHIBITED DO NOT SCALE DRAWING	DATE	2006.08.09	TITLE	LED CAP	DWG. NO.	LEU-2	PART NO.	LEU-2	
	DRAWN	LEEYA	MATERIAL	PC UL94V-2	SIZE	A4	SPEC. DWG	REV	B
	CHECKED		COLOR	NATURAL	FINISH	MATTE	SCALE: 5:1	UNIT	mm
	APPROVED		UNLESS OTHERWISE SPECIFIED TOLERANCE:	SEE ABOVE		SHEET 1 OF 1			