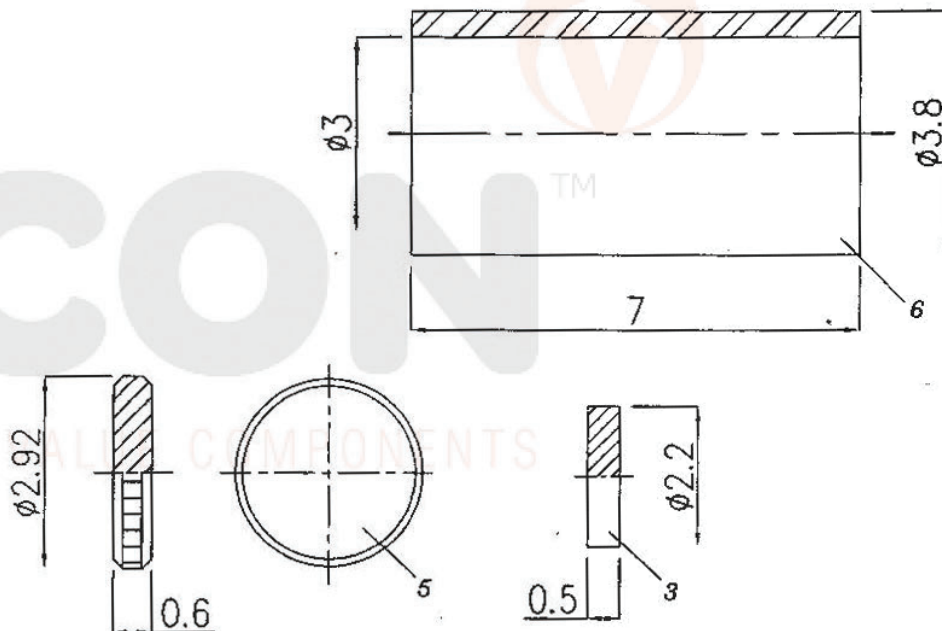


ELECTRICAL :		
IMPEDANCE :	50Ω	
FREQUENCY :	4 GHz	6 GHz
VSWR :	1.05 max	1.15 max



TOBYELECTRONICS LTD
sales@toby.co.uk | toby.co.uk

ITEM NO.	13-121L-R	圖號	MMCX\13-121L-ROHS	版次	A 版
PLATING	G+G+TD	日期	2006年01月20日	製圖	Elva
DESCRIPTION	MMCX RIGHT ANGLE PLUG CRIMP (RG-174.316.179)	單位	mm	比例	9.2:1
		公差	0-0.5mm ± 0.10mm	30-120mm ± 0.50mm	設計
		8-30mm ± 0.40mm	30-120mm ± 0.50mm	設計	
		公	差	認	定
		差		公	差

NO	DESCRIPTION	Q'TY	ITEM NO.	MATERIAL	PLATING
1	BODY	1	13-121L-ROHS	BRASS	GOLD
2	DIELECTRIC 1	1	T-020021	PTFE	-
3	DIELECTRIC 2	1	D-020044	POM	-
4	CENTER PIN	1	13-121L	PHOSPHOR BRONZE	GOLD
5	PARTS	1	R-02001-ROHS	BRASS	GOLD
6	FERRULE	1	F-03011-ROHS	BRASS	GOLD
7	RETAINING RING	1	CW-02001	BERYLLIUM COPPER	GOLD

G+G+TD: 1stG is Gold for body. 2ndG is Gold for pin.
3rdT is PTFE for insulation. 4thD is POM for insulation.