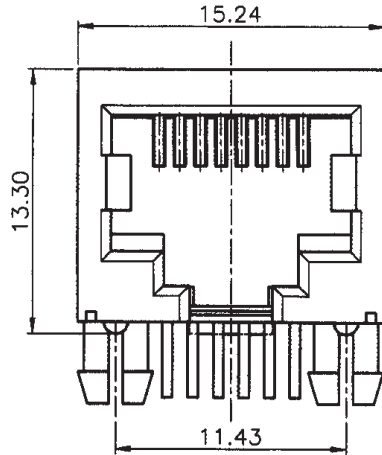
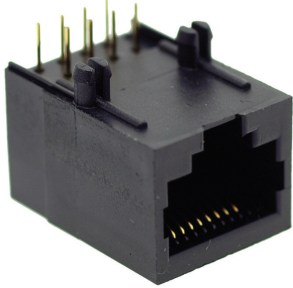
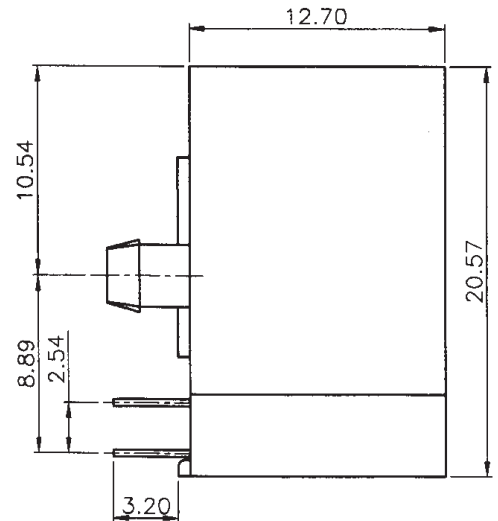
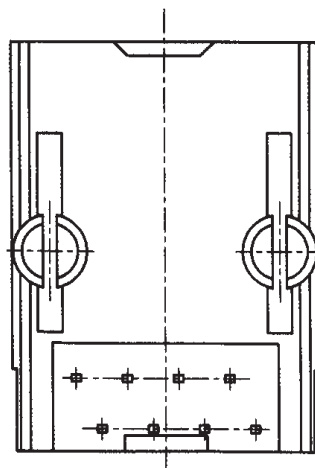
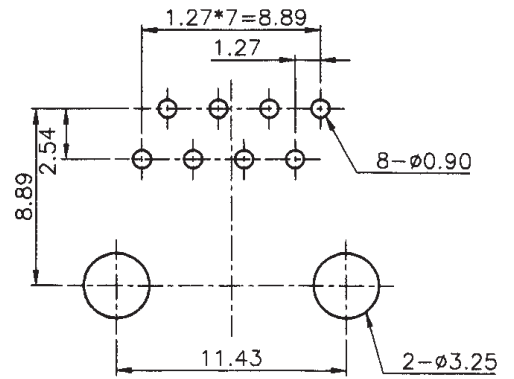


**Right Angle Modular Side Entry RJ45 Type PCB Jacks 3012-01 Series**

Tab Down - Through board unshielded type - 8 Positions/8 Contacts



PCB LAYOUT/TOP VIEW



**Ordering Information:**

**3012 - 01**

Please check online @ [www.toby.co.uk](http://www.toby.co.uk) for current stock

**Specification:**

Contact material:	Phosphor Bronze
Contact plating:	6 micron (u") selective gold plated (standard)
Shield material:	Copper alloy / Ni plated
Housing:	Thermoplastic UL94V-0 rated
Insert Colour:	Black