

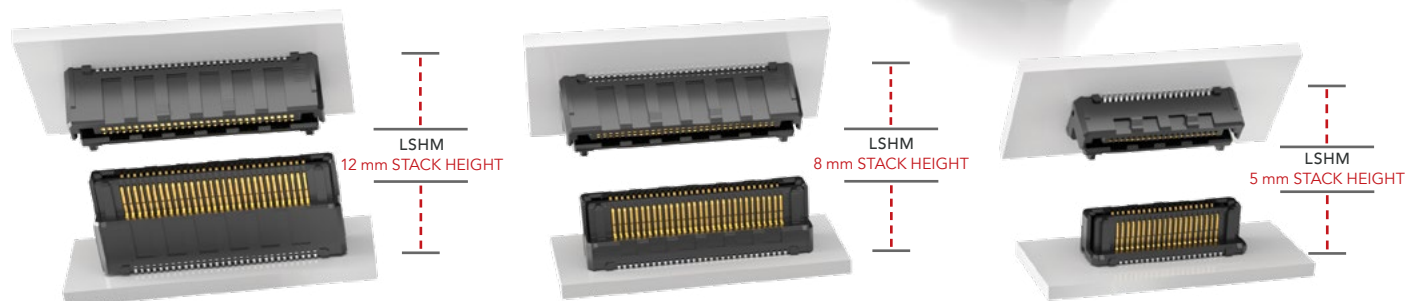
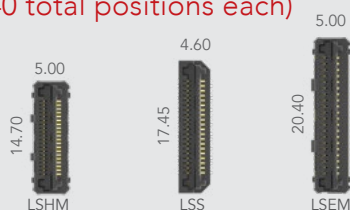
FINE PITCH SELF MATING CONNECTORS

(0.50 mm) .0197" PITCH

FEATURES & BENEFITS

- Ten stack height options from 5.00 mm to 12.00 mm
- 0.50 mm, 0.635 mm or 0.80 mm pitches
- Audible click when mated
- Mating and unmating forces approximately 4-6x greater than typical micro pitch connectors
- Self-mating system reduces inventory cost
- Parallel, perpendicular and coplanar systems
- Shield option
- Lubricated option

ACTUAL SIZE SHOWN SLIM BODY DESIGNS (40 total positions each)



KEY SPECIFICATIONS

INSULATOR MATERIAL	CONTACT MATERIAL	PLATING	OPERATING TEMP RANGE	CURRENT RATING	SMT COPLANARITY	LEAD-FREE SOLDERABLE
Black LCP	Phosphor Bronze	Au or Sn over 50 µ" (1.27 µm) Ni	-55 °C to +125 °C	LSHM: 2.0 A per pin LSS: 1.7 A per pin LSEM: 1.8 A per pin	(0.10 mm) .004" max	Yes

(0.50 mm) .0197" PITCH • RUGGED HERMAPHRODITIC CONNECTORS

LSHM	1	NO. PINS PER ROW	LEAD STYLE	PLATING OPTION	TAIL OPTION	A	SHIELD OPTION	K	"X"R
		05, 10, 20, 30, 40, 50	(Vertical) Specify LEAD STYLE from chart (Right-angle) -01 = Standard (Right-angle) -L1 = Lubricated	-F = Gold flash on contact, Matte Tin on tail -L = 10 μ" (0.25 μm) Gold on contact, Matte Tin on tail	-DV = Vertical -DH = Right-angle (Lead style -01 & -L1 only) -RH = Reverse Right-angle (Lead style -01 & -L1 only)		-S = With Shield -N = Without Shield	-K = (3.50 mm) .138" DIA Polyimide film Pick & Place Pad	-TR = Tape & Reel -FR = Full Reel Tape & Reel (must order maximum quantity per reel; contact Samtec for quantity breaks)

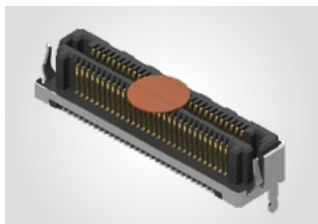
LSHM

Board Mates:

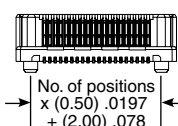
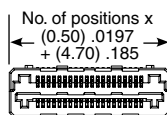
LSHM

Cable Mates:

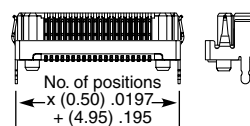
HLCD



LEAD STYLE (STANDARD)	LEAD STYLE (LUBRICATED)	A	B
-02.5	-L2.5	(3.95) .156	(1.00) .039
-03.0	-L3.0	(4.45) .175	(1.50) .059
-04.0	-L4.0	(5.45) .215	(2.50) .098
-06.0	-L6.0	(7.45) .293	(4.50) .177



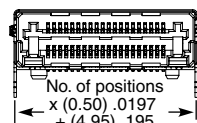
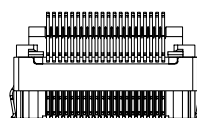
-DV-N



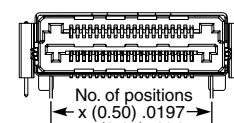
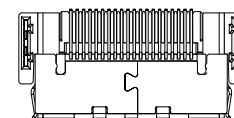
-DV-S

LEAD STYLE	MATED HEIGHT *
-02.5 & -02.5	(5.00) .196
-02.5 & -03.0	(5.50) .217
-03.0 & -03.0	(6.00) .236
-02.5 & -04.0	(6.50) .256
-03.0 & -04.0	(7.00) .276
-04.0 & -04.0	(8.00) .315
-02.5 & -06.0	(8.50) .335
-03.0 & -06.0	(9.00) .354
-04.0 & -06.0	(10.00) .394
-06.0 & -06.0	(12.00) .472

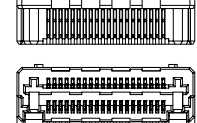
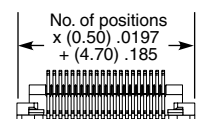
*Processing conditions will affect mated height.



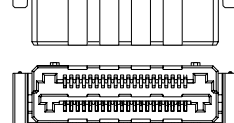
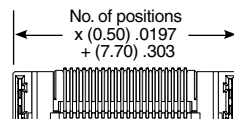
-DH-S



-RH-S



-DH-N



-RH-N

Note:
Some lengths, styles and
options are non-standard,
non-returnable.