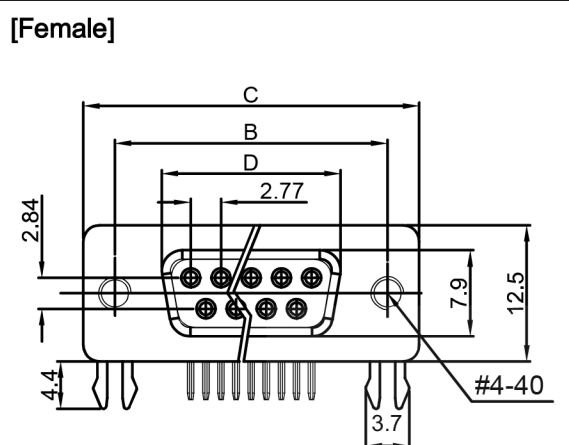


Dept	
Qty	
DC	1
ED	1
IE	1
ISO	1
PD	1
R&D	1
SD	1
QA	1
QC	1
QE	1



Dimension

Position	A±0.2	B±0.2	C±0.3	D
9	17.90	24.99	30.80	16.33
15	26.50	33.32	39.14	24.66
25	40.00	47.04	53.04	38.38
37	56.50	63.50	69.32	54.84

REV.	DESCRIPTION	DRAWN	CHECKED	APPROVED
A	NEW RELEASE	LJH 05/13/06'		LJC 05/13/06'
C	DRAWING UPDATE	JLZ 08/08/17'		

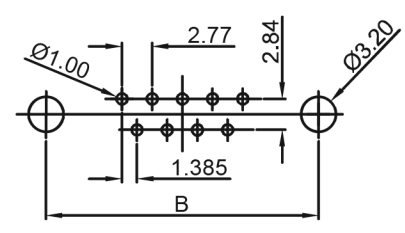
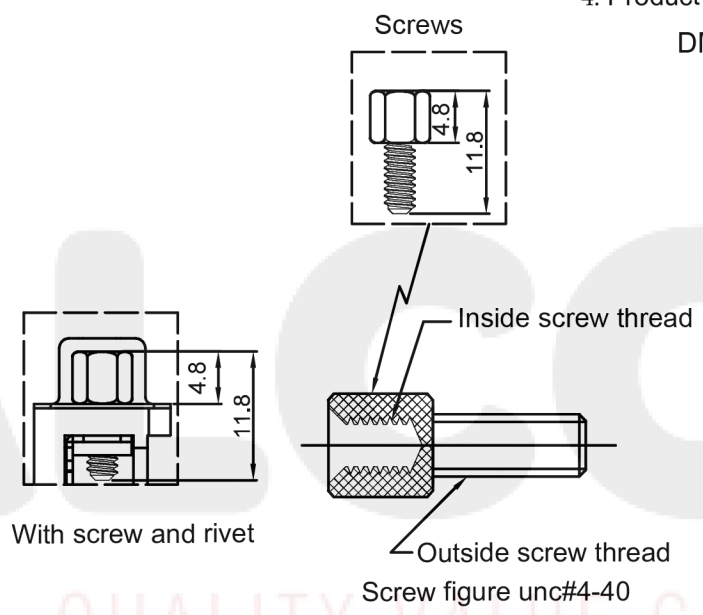
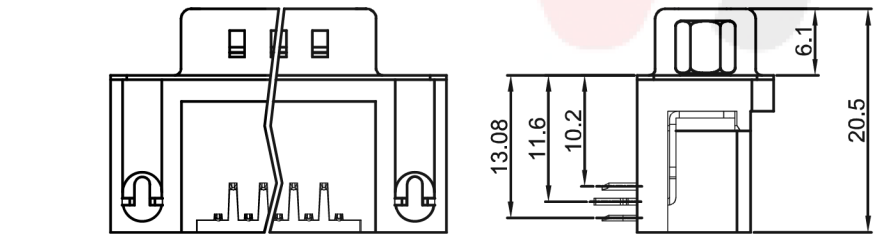
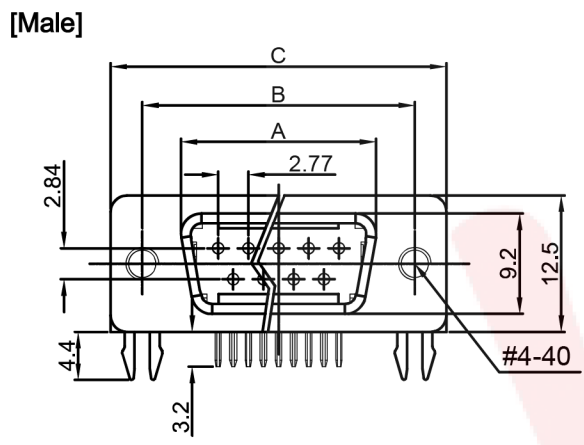
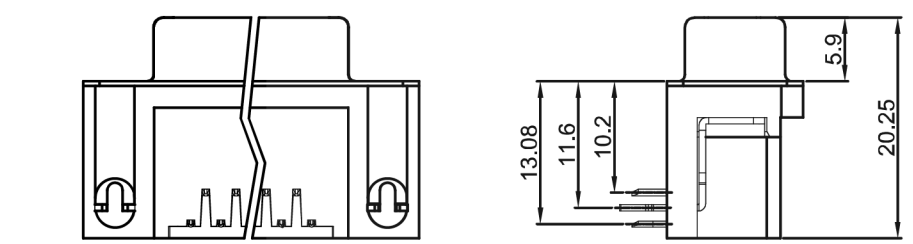
- NOTES:
- Electrical characteristics:
 - Contact resistance: 20mΩ Max. Initial.
 - Dielectric withstanding voltage: 500V AC(rms) for 1 minute.
 - Insulation resistance: 1000MΩ Min.
 - Environment characteristics:
 - Temperature range: -40°C~+105°C.
 - Materials:
 - Insulator:PBT+Glass fiber
 - Shell:Steel
 - Contact:Copper alloy
 - Contact plating: Selective gold flash
 - Color of housing: Black

4. Product number code:

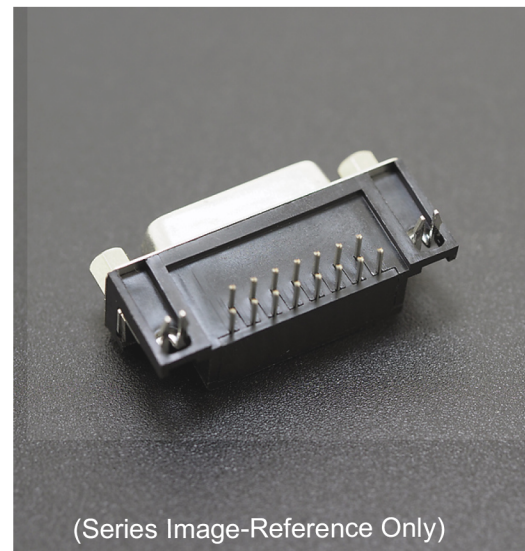
DMRM - X X

Connector type
P:Plug S:Socket

No.of contacts
09,15,25,37



Recommend PCB layout
(Tolerance:±0.05)



GENERAL TOLERANCE		ANGLE TOLERANCE	
X.	±0.60	X.	±5°
.X	±0.38	.X	±3°
.XX	±0.25	.XX	±2°

DRAWING TYPE	CUSTOMER		
SCALE	1:1	SHEET	1 OF 1
DRAWING NO.	DMRM-XX-X-XXXX		

PROJECTION		TITLE	D-SUB Standard Right Angle 10.2mm Euro Long Footprint, Rivets, UNC#4-40 Hex Nuts & PCB Locks
UNITS	mm	SHEET SIZE	A4
SHEET SIZE	A4	SERIES	DMRM SERIES

TOBY ELECTRONICS LTD
www.toby.co.uk | sales@toby.co.uk