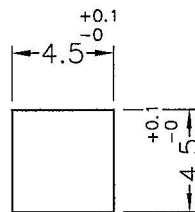
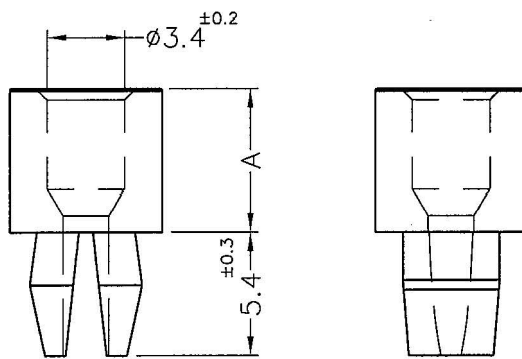
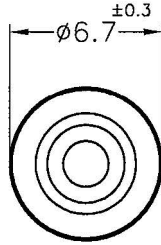


DIM.	TOL.
5mm DOWN.	±0.2
5~20mm	±0.3
20~40mm	±0.4
40~60mm	±0.5
60~100mm	±0.8
100mm UP.	±1.0

REVISIONS			
REV	DESCRIPTION	DATE	BY



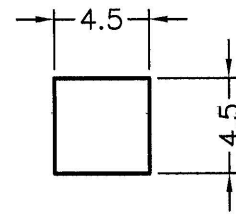
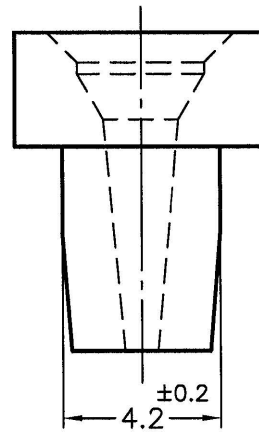
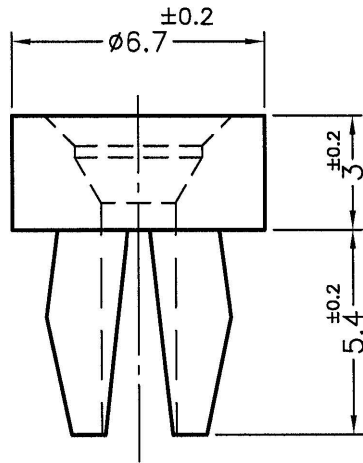
MOUNTING HOLE
THICKNESS: 2.0mm

PART NO.	A
ETS-3	3.0
ETS-3.2	3.2
ETS-3.4	3.4
ETS-4.6	4.6
ETS-4.8	4.8
ETS-6.3	6.3
ETS-8	8.0
ETS-10	10.0
ETS-12	12.7
ETS-16	15.9
ETS-19	19.1

NOTE: MADE OF EQUIVALENT MATERIAL.

				TITLE	SPEC. DWG.
				MATERIAL	DATE
SEE ABOVE				NYLON 66 UL94V-2	2004.04.16
				FINISH	DRAWN
ETS-H				NATURAL	TIM
				COLOR	CHECK
PART NUMBER	DRAWING NUMBER	UNLESS OTHERWISE SPECIFIED TOLERANCE		APPROVED	
SEE ABOVE	ETS-H	SEE ABOVE	SEE ABOVE		
SIZE	SCALE	UNIT	REV		
A4	3:1	mm	B		

REVISIONS			
REV	DESCRIPTION	DATE	BY

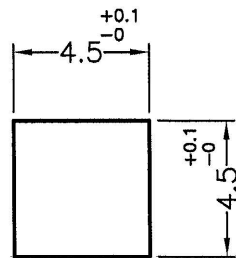
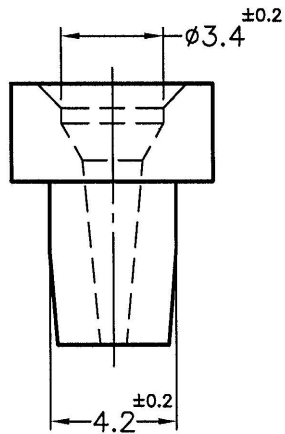
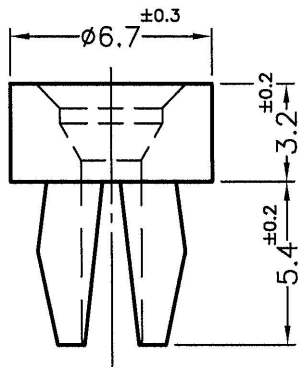


MOUNTING HOLE

NOTE:MADE OF EQUIVALENT MATERIAL.

				TITLE	PLASTIC CONICAL ANCHORS	SPEC. DWG.	
				MATERIAL	NYLON 66 UL94V-2	DATE	2004.04.16
PART NUMBER				FINISH	DRAWN	TIM	
ETS-3-1				COLOR	NATURAL	CHECK	
DRAWING NUMBER				UNLESS OTHERWISE SPECIFIED TOLERANCE	APPROVED	<i>Kang</i>	
ETS-3-1				SEE ABOVE			
SIZE	SCALE	UNIT	REV				
A4	5:1	mm	A				

REVISIONS			
REV	DESCRIPTION	DATE	BY

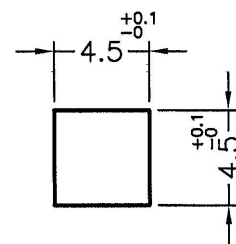
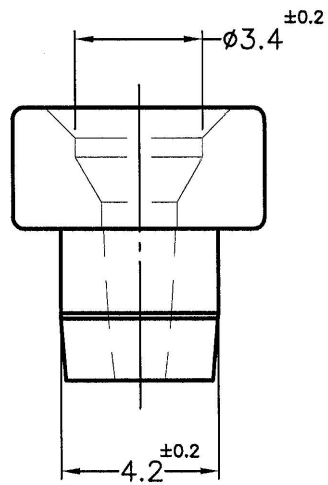
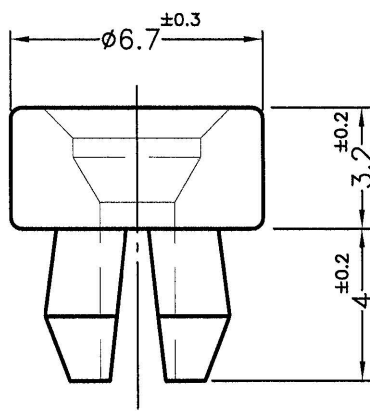


MOUNTING HOLE
THICKNESS 2.0mm

NOTE:MADE OF EQUIVALENT MATERIAL.

				TITLE	SPACER SUPPORT	SPEC. DWG.					
				MATERIAL	NYLON 66 UL94V-2	DATE	2004.04.16				
				FINISH		DRAWN	TIM				
PART NUMBER	ETS-3.2-1		DRAWING NUMBER	ETS-3.2-1		COLOR	NATURAL	CHECK			
SIZE	A4	SCALE	4:1	UNIT	mm	REV	A	UNLESS OTHERWISE SPECIFIED TOLERANCE	SEE ABOVE	APPROVED	<i>Kang</i>

REVISIONS			
REV	DESCRIPTION	DATE	BY

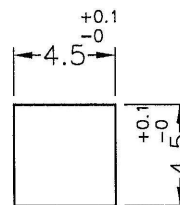
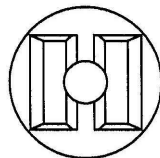
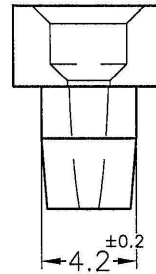
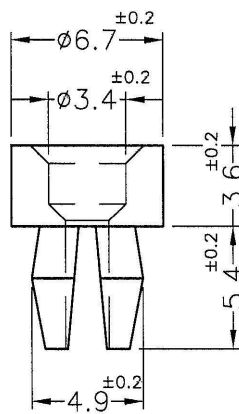
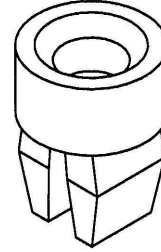


MOUNTING HOLE
THICKNESS 2.3mm

NOTE:MADE OF EQUIVALENT MATERIAL.

				TITLE SPACER SUPPORT		SPEC. DWG.	
				MATERIAL NYLON 66 UL94V-2		DATE 2017.08.10	
				FINISH		DRAWN <i>Shean</i>	
PART NUMBER ETS-3.2-2		DRAWING NUMBER ETS-3.2-2		COLOR NATURAL		CHECK 	
SIZE A4	SCALE 5:1	UNIT mm	REV A	UNLESS OTHERWISE SPECIFIED TOLERANCE SEE ABOVE		APPROVED <i>Kang</i>	

REVISIONS			
REV	DESCRIPTION	DATE	BY

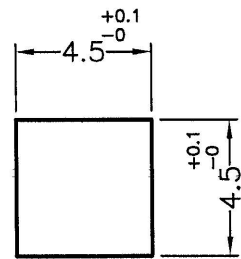
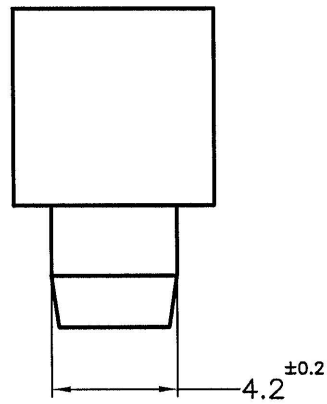
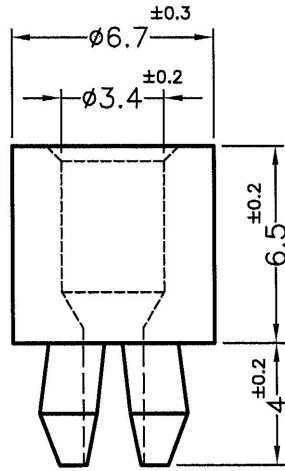


MOUNTING HOLE

NOTE:MADE OF EQUIVALENT MATERIAL.

				TITLE PLASTIC CONICAL ANCHORS		SPEC. DWG.	
				MATERIAL NYLON 66 UL94V-0		DATE 2014.01.09	
				FINISH		DRAWN T.C	
PART NUMBER ETS-3.6		DRAWING NUMBER ETS-3.6		COLOR NATURAL(WHITE)		CHECK 	
SIZE A4	SCALE 3:1	UNIT mm	REV A	UNLESS OTHERWISE SPECIFIED TOLERANCE SEE ABOVE		APPROVED 	

REVISIONS			
REV	DESCRIPTION	DATE	BY

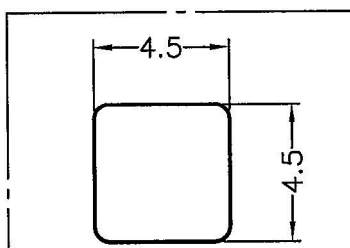
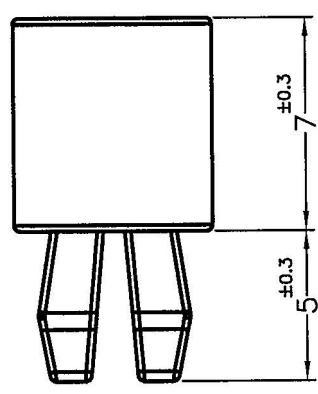
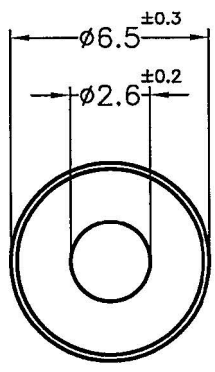


MOUNTING HOLE

NOTE:MADE OF EQUIVALENT MATERIAL.

				TITLE	SPACER SUPPORT	SPEC. DWG.	
				MATERIAL	NYLON 66 UL94V-2	DATE	2009.04.22
				FINISH		DRAWN	SAI
PART NUMBER		DRAWING NUMBER		COLOR	NATURAL	CHECK	
ETSS-6.5		ETSS-6.5		UNLESS OTHERWISE SPECIFIED TOLERANCE	SEE ABOVE	APPROVED	
SIZE	A4	SCALE	4:1	UNIT	mm	REV	A

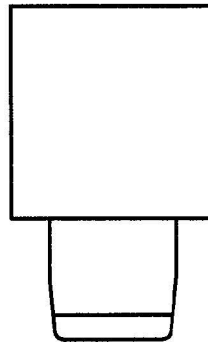
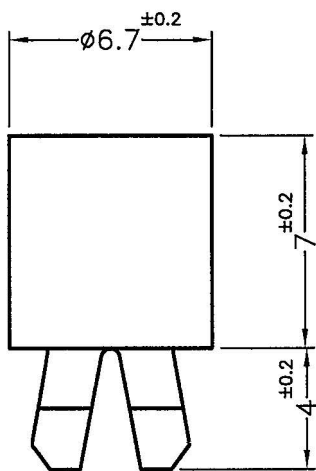
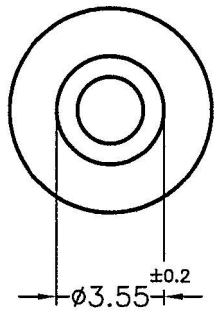
REVISIONS			
REV	DESCRIPTION	DATE	BY



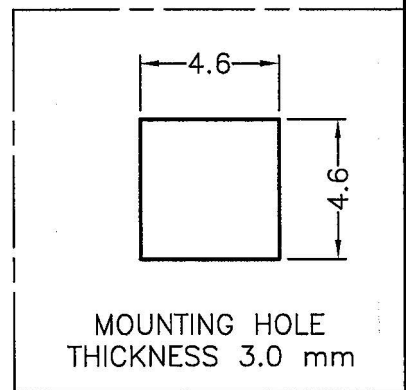
NOTE:MADE OF EQUIVALENT MATERIAL.

MOUNTING HOLE THICKNESS:2.38mm

				TITLE	SPACER SUPPORT	SPEC. DWG.	
				MATERIAL	NYLON 66 UL94V-2	DATE	2018.11.28
				HARDNESS		DRAWN	Louis
PART NUMBER				COLOR		CHECK	
ETS-7				NATURAL		Will	
DRAWING NUMBER				UNLESS OTHERWISE SPECIFIED TOLERANCE		APPROVED	
ETS-7				SEE ABOVE		Kang	
SIZE	SCALE	UNIT	REV				
A4	4:1	mm	A				



NOTE:1. SHRINKING IS NORMAL STATUS.
2. MADE OF EQUIVALENT MATERIAL.



Toby Electronics Ltd
E: sales@toby.co.uk
T: +44 (0)1295271777



	DATE	2019.06.20	TITLE	SPACER SUPPORT		DWG. NO.	PART NO.	
	DRAWN	Y.C.P	MATERIAL	NYLON 66 UL94V-2		ETS-HM		ETS-7M
	CHECKED	<i>[Signature]</i>	COLOR	NATURAL	FINISH	SIZE	SPEC. DWG	REV
	APPROVED	<i>[Signature]</i>	UNLESS OTHERWISE SPECIFIED TOLERANCE: SEE ABOVE		A4	A		
DO NOT SCALE DRAWING			SCALE: 4:1			UNIT	mm	SHEET 1 OF 1