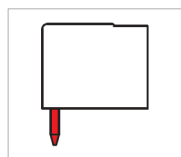
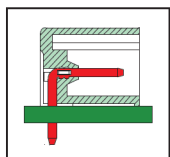


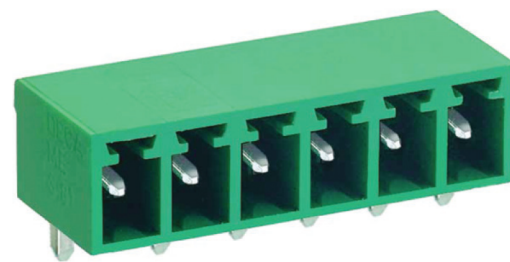
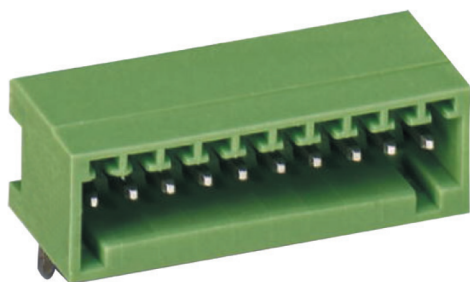
ME030 PCB Connector, Header



ME030-250



ME030-350

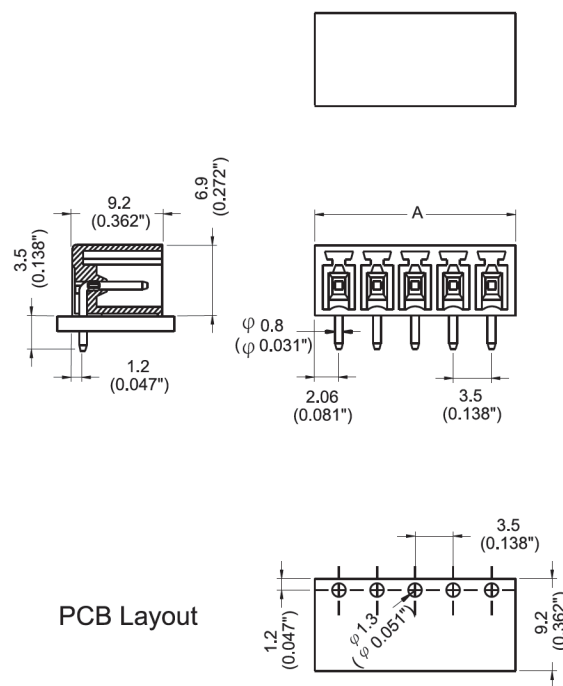
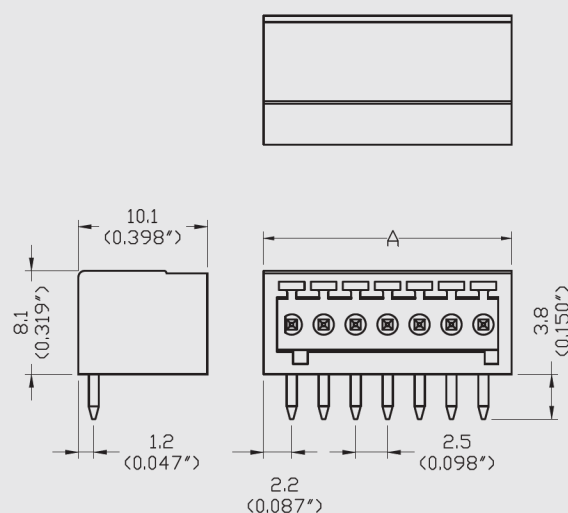


DIMENSIONS/POSITIONS

	ME030-250	ME030-350
Pitch	2.50mm	3.50mm
Poles	2 ~ 24Poles	2 ~ 24Poles
Dimension A	2.50mm	3.50mm
Length	$A = 2.50 \times P + 1.90 \text{mm} (P \geq 4)$	$A = 3.50 \times P + 0.6 \text{mm} (P \geq 2)$
Housing Material	PA 66	PA 66
Pin Dimensions	Brass, Tin Plated	Brass, Tin Plated
PCB Hole Diameter	1.2mm	1.3mm
Operating Temperature	-40°C to +105°C	-40°C to +105°C

TECHNICAL DATA

Connection in acc. with standard EN-VDE		
Nominal Current I_N	4A	8A
Nominal Cross Section	-	-
Maximum load current	4A	8A
Insulating Material	PA	PA
Inflammability class acc. to UL94	V0	V0
Nominal voltage, UL/CUL	125V	300V
Nominal current, UL/CUL	4A	10A



Type No:ME030-350
Order No:ME030-350xx



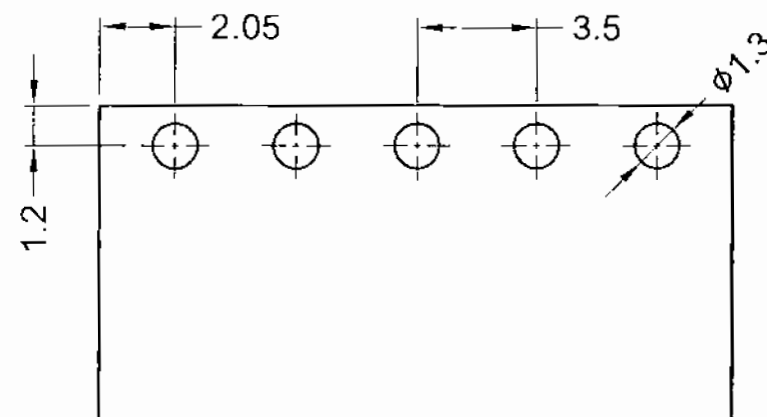
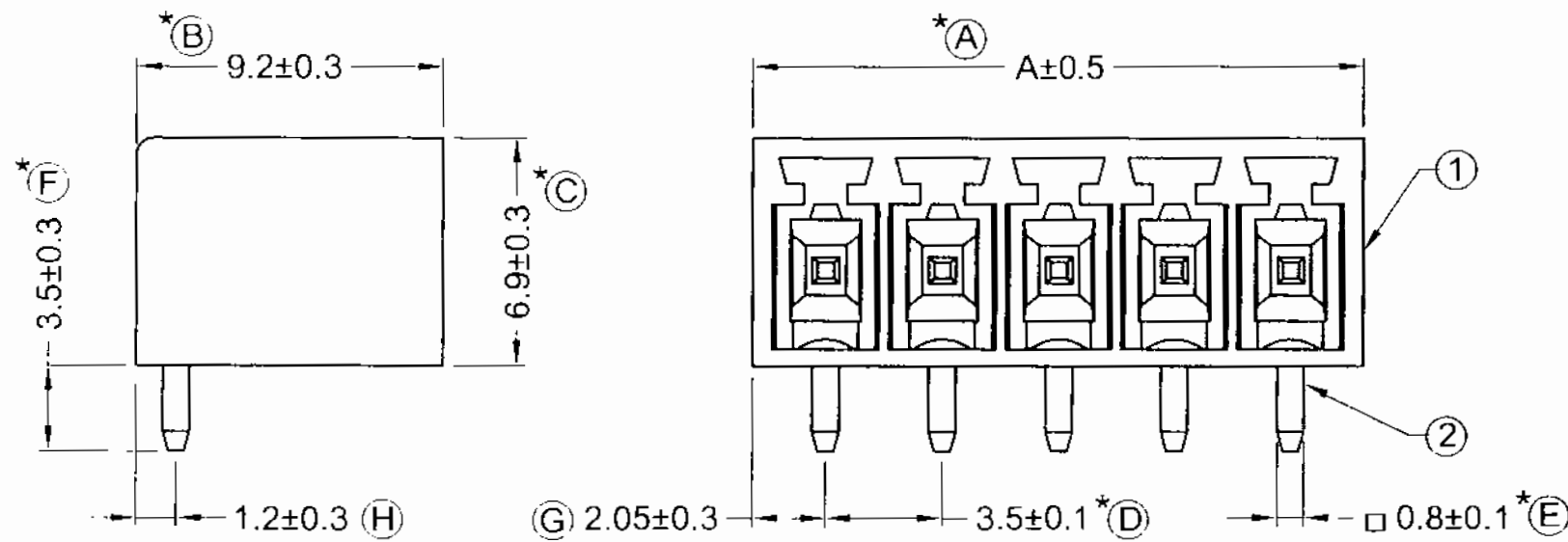
Pitch : 3.50mm(0.138inch)

Poles	A(mm)	A(inch)	Poles	A(mm)	A(inch)
2	7.60	0.299	15	53.10	2.091
3	11.10	0.437	16	56.60	2.228
4	14.60	0.575	17	60.10	2.366
5	18.10	0.713	18	63.60	2.504
6	21.60	0.850	19	67.10	2.642
7	25.10	0.988	20	70.60	2.780
8	28.60	1.126	21	74.10	2.917
9	32.10	1.264	22	77.60	3.055
10	35.60	1.402	23	81.10	3.193
11	39.10	1.539	24	84.60	3.331
12	42.60	1.677			
13	46.10	1.815			
14	49.60	1.953			

Current rating : 12Amp 150V (UG B)
10Amp 300V (UG B/D)
Insulation withstands volt : AC1600V min
Insulation resistance : >2000MΩ DC500V
Operation temperature : -40°C to +105°C

CONFIRMED & ACCEPTED BY:

	Material	Plating/Finish	Remark
1	Insulating body Polyamide 66(UL94V-0)		Green
2	Solder pin Brass	Tin plated	
3			
4			
5			



PCB Layout

Toby Electronics Ltd www.toby.co.uk sales@toby.co.uk			PART NAME	UNIT	SCALE
			Terminal Blocks	MM	X
DESIGN	CHECK	APPROVE	DRAWING NO.	SHEET	
DATE	DATE	DATE	ME030-350xx	1 / 1	
2019/03/20	2019/03/20	2019/03/20			



www.toby.co.uk