

**SMP TO 40 GHz**

**SMP Cable Assemblies**  
RF25S, RF405



SERIES	END 1 CONNECTOR	END 2 CONNECTOR	OVERALL LENGTH
<p><b>RF25S</b> = MWC-2550-01 microwave cable with 25 AWG solid FEP dielectric</p> <p><b>RF405</b> = RG 405 (.086") 24 AWG semi-flexible microwave cable</p>	<p><b>-00SJ7</b> = SMP Straight Jack</p> <p><b>-00RJ7</b> = SMP Right-angle Jack</p>		<p><b>-"XXXX"</b> = Overall Length in millimeters</p> <p>-0100 (100 mm) 3.94" minimum</p>
<p><b>ALSO AVAILABLE</b></p> <p>SMA = RF25S</p> <p>SMA = RF405</p>			

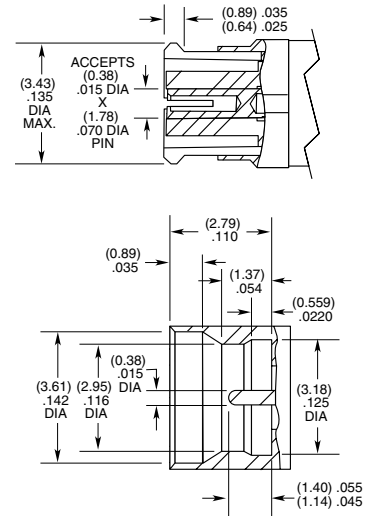
**SMP Cable Connectors**  
PRF00



CONNECTORS FOR INDUSTRY STANDARD CABLES	
PRF00-J-C-EE-047A-RD	.047 Temp-Flex, low loss flexible, 29 AWG
PRF00-J-C-EE-085A-SD	.085, semi-rigid, 23 AWG
PRF00-PF-C-KK-047D-BD	.047, semi-rigid

J-C = Cable Jack  
 EE = Plating (50 μ" Gold center contact & outer contact)  
 KK = Plating (100 μ" Gold over Nickel center contact, passivated outer contact)  
 BD = Bulkhead, Direct Solder  
 SD = Straight, Direct Solder  
 RD = Right-angle, Direct Solder

**INTERFACE STANDARD (FULL DETENT)**



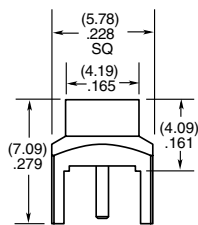
# SMP TO 40 GHz

## SMP Board Connectors SMP-TH, SMP-EM

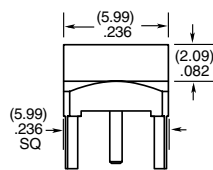
Cable Mates:  
RF405, RF255



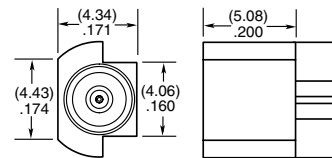
SMP	GENDER	TYPE	PLATING	ORIENTATION	TERMINATION
	<p><b>-PF</b> = Plug, Full Detent</p> <p><b>-PL</b> = Plug, Limited Detent</p> <p><b>-PS</b> = Plug, Smooth Bore</p> <p><b>-PC</b> = Plug, Catcher's Mitt</p>	<p><b>-P</b> = PCB Mount</p>	<p><b>-GF</b> = 10 μ" (0.25 μm) Gold center contact, Gold Flash outer contact (-TH2 only)</p> <p><b>-HH</b> = 30 μ" (0.76 μm) Gold center and outer contact (-EM3)</p>	<p><b>-ST</b> = Straight</p>	<p><b>-TH2</b> = Through-hole</p> <p><b>-EM3</b> = Drop-in Edge Mount (Not available with -PC)</p>



**-PF/-PL/-PS-TH2**



**-PC-TH2**

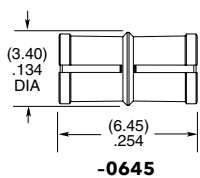


**-EM3**

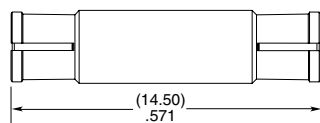
## SMP Bullet Adaptor SMP-B



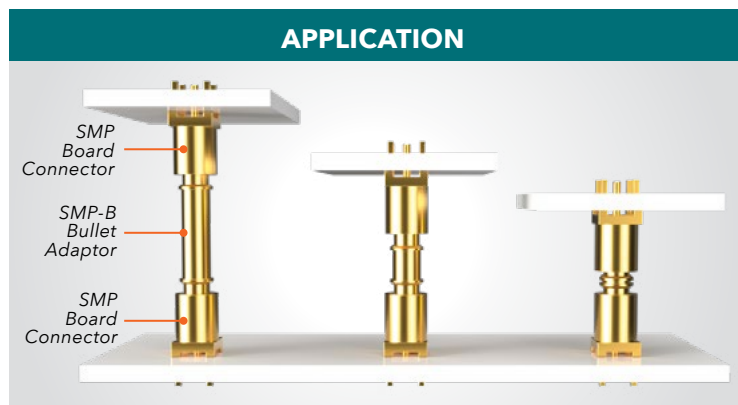
SMP	J	TYPE	PLATING	ORIENTATION	BULLET LENGTH
		<p><b>-B</b> = Bullet Adaptor</p>	<p><b>-GF</b> = 10 μ" (0.25 μm) Gold center contact, Gold Flash outer contact</p>	<p><b>-ST</b> = Straight</p>	<p><b>-0645</b> = 6.45 mm (.254")</p> <p><b>-1450</b> = 14.50 mm (.571")</p>



**-0645**



**-1450**



Compensates for axial & radial misalignment