

**DIN Cable Assemblies**  
RFA6T, RFB6T, RF179, RFB8T, RFC6T, RFC8T



| SERIES   | END 1 CONNECTOR                           | END 2 CONNECTOR  | OVERALL LENGTH   |
|--|---|--|--|
| <b>RFC6T*</b><br>= 12G-SDI, Belden 4694R Cable<br><br><b>RFC8T*</b><br>= 12G-SDI, Belden 4855R Cable<br><br><b>RFA6T</b><br>= RG 6 Cable<br><br><b>RFB6T</b><br>= Belden 1694A Cable<br><br><b>RF179</b><br>= RG 179 Cable<br><br><b>RFB8T</b><br>= Belden 1855A Cable | <b>-78SP4</b><br>= 75 Ω DIN Straight Plug | <b>ALSO AVAILABLE</b><br><br>75 Ω: HD-BNC™, BNC = RFB6T, RFA6T, RFC6T<br>75 Ω: BNC, SMB, MCX, MMCX = RF179<br>75 Ω: HD-BNC™ = RFB8T, RFC8T | <b>-“XXXX”</b><br>= Overall length in millimeters<br><br>-0100 (100 mm) 3.94" minimum (RF179)<br><br>-0300 (300 mm) 11.81" minimum (RFA6T, RFB6T, RFB8T, RFC6T, RFC8T) |

\*Designed to meet SMPTE 2082 12G-SDI specifications.

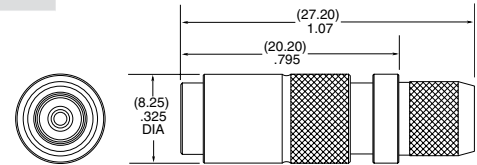
**DIN Cable Connectors**  
DIN7A-CA



| CONNECTORS FOR INDUSTRY STANDARD CABLES |   |
|---|---|
| DIN7A-PP-C-GF-ST-CA3                    | RG 179                                    |
| DIN7A-PP-C-GF-ST-CA6                    | *RG 6, Belden 1694A or Belden 4694R Cable |
| DIN7A-PP-C-GF-ST-CA8                    | *Belden 1855A or Belden 4855R Cable       |

\*Designed to meet SMPTE 2082 12G-SDI specifications.

PP-C = Push Pull Plug Cable  
 GF = Plating (10 μ" Gold on center contact, Flash Gold on outer contact, Nickel on Shell)  
 ST = Straight



-CA6

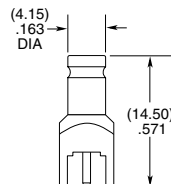
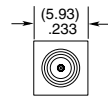
Supplied with pins and ferrules.

**DIN Board Connectors**  
DIN7A-TH, DIN7A-BH

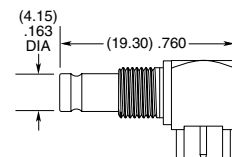
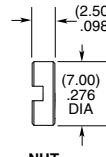
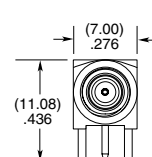
**Cable Mates:**  
RFA6T, RFB6T, RF179, RFB8T, RFC6T, RFC8T, GRF7H-C



| DIN7A | GENDER              | TYPE                     | PLATING   | ORIENTATION   | TERMINATION   |
|-------|---------------------|--------------------------|---|---|---|
|       | <b>-J</b><br>= Jack | <b>-P</b><br>= PCB Mount | <b>-GF</b><br>= 10 μ" (0.25 μm) Gold center contact, 3 μ" (0.08 μm) Gold outer contact, (100 μ" (2.54 μm) Nickel body -RA only) | <b>-ST</b><br>= Straight (-TH1 only)<br><br><b>-RA</b><br>= Right-angle (-BH1 only) | <b>-TH1</b><br>= Through-hole (-ST only)<br><br><b>-BH1</b><br>= Bulkhead Through-hole (-RA only) |
|       |                     |                          |   |   |   |



-ST-TH1



-RA-BH1

**Notes:**  
Designed to meet SMPTE 2082 12G-SDI specifications.

Additional plating options available on Cable Assemblies, Cable Connectors and Board Connectors.