

HIGH-PERFORMANCE TEST ASSEMBLIES TO 70 GHz

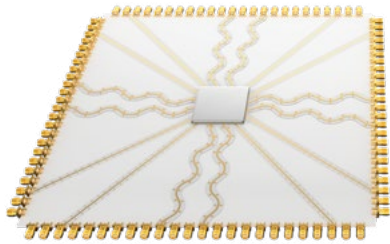
FEATURES & BENEFITS

The high-density array designs and advanced cabling solutions within Samtec's Bulls Eye[®] product family support test and measurement applications to 70 GHz.

- Compression interface to the board provides easy on/off and eliminates soldering costs
- High-density, space-saving design
- Enables smaller evaluation boards and shorter trace lengths
- Installation: while the attach process for each series is similar, each have unique specifications that need to be observed



Traditional with SMAs




Bulls Eye[®]



HIGH-DENSITY & SPACE-SAVING

Enables smaller evaluation boards and shorter trace lengths.

PRODUCT FAMILY CROSS REFERENCE GUIDE

| ASSEMBLY | 70 GHz | 50 GHz | 40 GHz | 20 GHz | |
|----------------------|---|--|--|-----------------|-----------------|
| End 2 Connectors | 1.85 mm | 2.40 mm (50 GHz) | 2.92 mm (40 GHz) | 2.92 mm (2 Row) | 2.92 mm (4 Row) |
| Samtec Series | BE70A | BE40A | | BDRA | BQRA |
| Cable Type | .086 | MWC-2350CU-01 | | MWC-2350-01 | |
| Cable Management | Yes | | | | |
| PCB Transmission | Microstrip or Stripline | | | Stripline | |
| Design | Spring-Loaded Contact; 360° Grounding  | Pogo-Pin for Signal & Ground  | Fixed-Pin for Signal; Elastomer & Block for Ground  | | |
| No. of Positions | 2x 3, 4, 6, 8, 10, 12, 14, 16 | | | 2x 12 | 20 |
| Impedance | 50 Ω | | | | |
| FPGA Development Kit | Xilinx [®] Zynq [®] UltraScale [™] RFSoc ZCU1275 | | Xilinx [®] Virtex [®] UltraScale [™] FPGA VCU110 | | |

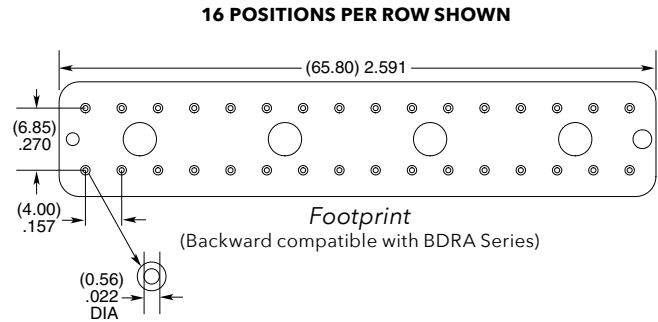
50 GHz & 40 GHz ASSEMBLIES



| BE40A | TRANSMISSION TYPE | END 2 | PHASE MATCHING | 2 | POSITIONS PER ROW | OVERALL LENGTH |
|-------|---|--|---|---|---|---|
| | -S = Stripline -M = Microstrip | -92SJ = 40 GHz, 2.92 mm Straight Jack -24SJ = 50 GHz, 2.40 mm Straight Jack -92SP = 40 GHz, 2.92 mm Straight Plug -24SP = 50 GHz, 2.40 mm Straight Plug | -2 = 2.0 Pico-second -5 = 5.0 Pico-second -N = No Phase Matching | | -03, -04, -06, -08, -10, -12, -14, -16 | - "XXXX" = Overall length in millimeters -0152 (0152 mm) 5.984" to -9999 (9999 mm) 393.7" |

BE40A

End 2 Connectors:
2.40 mm (50 GHz)
2.92 mm (40 GHz)

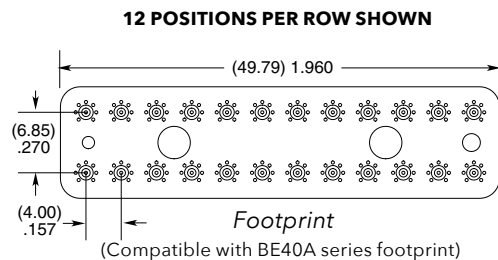
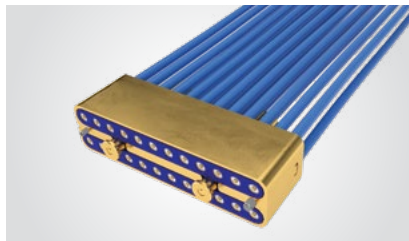


20 GHz ASSEMBLIES

| BDRA | END 2 | PHASE MATCHING | 12 | OVERALL LENGTH |
|------|--|---|--|---|
| | -92SJP = 2.92 mm Straight Jack -92SPP = 2.92 mm Straight Plug | -2 = 2.0 Pico-second -5 = 5.0 Pico-second -10 = 10.0 Pico-second | -12 = Number of phase matched pairs | - "XXXX" = Overall length in millimeters -0100 (100 mm) 3.94" to -9999 (9999 mm) 393.7" |

BDRA

End 2 Connectors:
2.92 mm



| BQRA | END 2 | PHASE MATCHING | 10 | OVERALL LENGTH |
|------|--|---|--|---|
| | -92SJP = 2.92 mm Straight Jack -92SPP = 2.92 mm Straight Plug | -2 = 2.0 Pico-second -5 = 5.0 Pico-second -10 = 10.0 Pico-second | -10 = Number of phase matched pairs | - "XXXX" = Overall length in millimeters -0100 (100 mm) 3.94" to -9999 (9999 mm) 393.7" |

BQRA

End 2 Connectors:
2.92 mm

