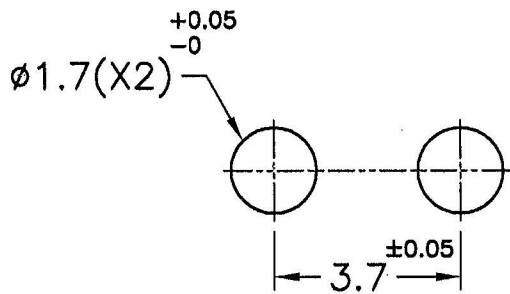
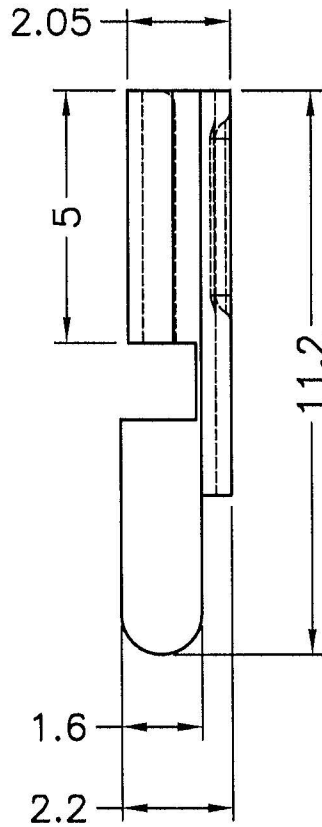
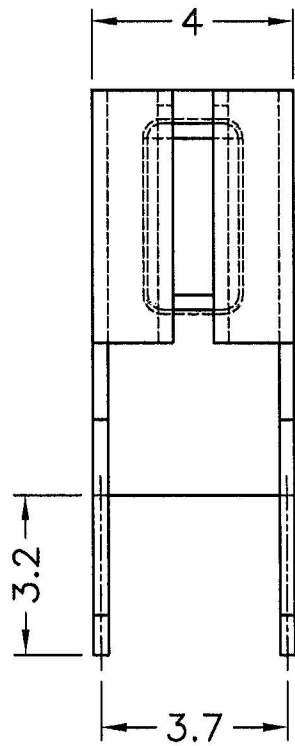
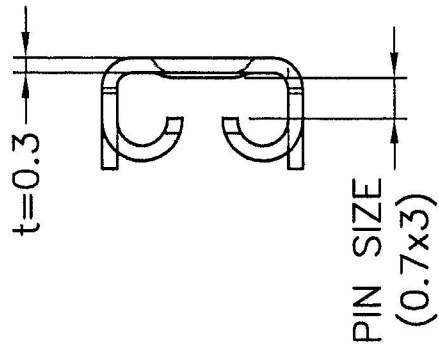


www.toby.co.uk

REVISIONS			
REV	DESCRIPTION	DATE	BY



RECOMMEND MOUNTING HOLE
RECOMMEND THICKNESS: 1.6mm

RoHS Compliant	
★ Pb	<1000PPM
★ Cd	< 100PPM
★ Hg	<1000PPM
★ Cr6+	<1000PPM
★ PBBs	<1000PPM
★ PBDEs	<1000PPM

NOTE: 1. MADE OF EQUIVALENT MATERIAL.

2. SLIGHT DEFORMED IS NORMAL STATUS.

				TITLE	P. C. B TERMINAL	SPEC. DWG.	
				MATERIAL	BRASS	DATE	2009.06.29
				FINISH	TIN PLATED	DRAWN	JIM
PART NUMBER		DRAWING NUMBER		BODY COLOR	CHECK		
PCFS156A		PCFS156A			Kenny		
SIZE	SCALE	UNIT	REV	UNLESS OTHERWISE SPECIFIED TOLERANCE	APPROVED		
A4	5:1	mm	B	±0.2	Kang		