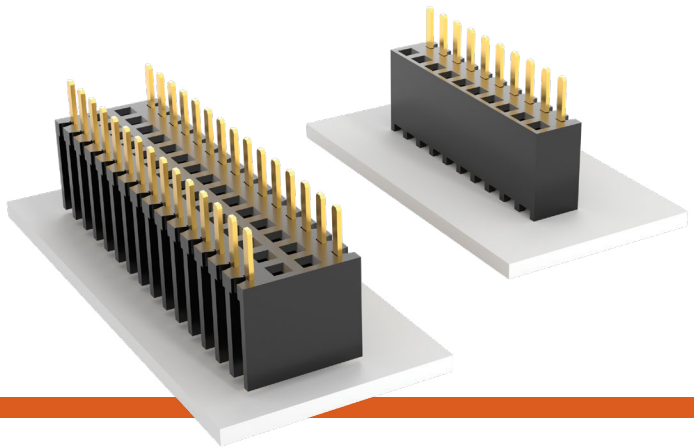


BOTTOM MOUNT SOCKET STRIPS

(2.54 mm) .100" PITCH • BSW SERIES



BSW

Mates:

TSW, MTSW, HTSW,
MTLW, TSM, EW, ZW,
HW, DW, PHT

FEATURES

- Bottom mount socket strips accept .025" SQ terminals.
- Ideal for soldering and plugging from the same side of the board.
- For low-profile connections and high temperature soldering.



SPECIFICATIONS

Insulator Material:

Black Thermoplastic

Insulation Resistance:

5000 MW min

Contact Material:

Phosphor Bronze

Plating:

Au or Sn over

50 μ" (1.27 μm) Ni

Operating Temp Range:

-55 °C to +125 °C with Gold

-55 °C to +105 °C with Tin

Withstanding Voltage:

1000 VRMS @ 60 Hz

Insertion Depth:

(3.68 mm) .145" to

(6.35 mm) .250"

PROCESSING

Lead-Free Solderable:

Wave only

ALSO AVAILABLE

Other Plating
(MOQ Required)

Note:

Some lengths, styles and options are non-standard, non-returnable.

BSW	1	NO. PINS PER ROW	LEAD STYLE	PLATING OPTION	ROW OPTION	OTHER OPTION
-----	---	------------------	------------	----------------	------------	--------------

02 thru 36

-04
= Standard Lead

-24
= Low Insertion Force

-L
= 10 μ" (0.25 μm)
Gold contact,
Matte Tin on tail

-G
= 20 μ" (0.51 μm)
Gold contact,
Gold Flash on tail

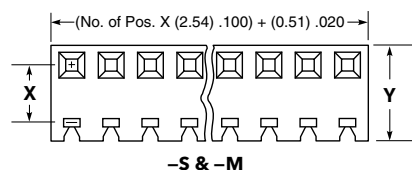
-T
= Matte Tin
(Not available with
Low Insertion Force)

-S
= Single Row

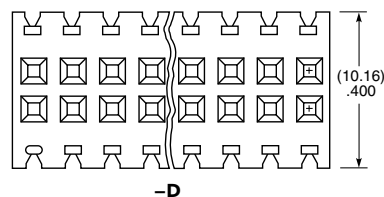
-M
= Single Row
More Plug Space

-D
= Double Row

-S
= Standoffs
for single
and double
rows only
(-S & -D only)

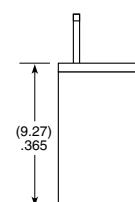
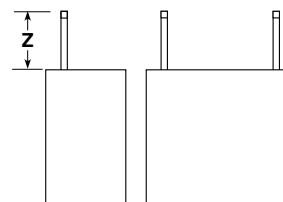
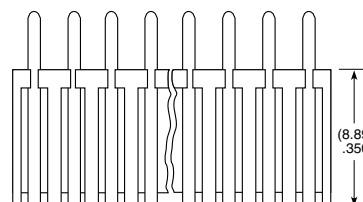


ROW OPTION	X	Y
-S	(2.54) .100	(5.08) .200
-M	(3.81) .150	(6.35) .250



ROW OPTION	Z
-S*	(4.31) .170
-M	(3.43) .135
-D*	(4.32) .170

*Less (0.38 mm) .015" with standoffs



APPLICATIONS

