

16

1636 07

Power supply connectors

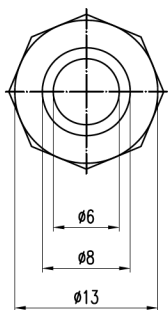
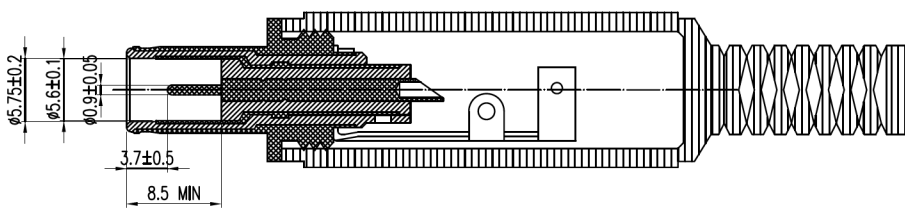
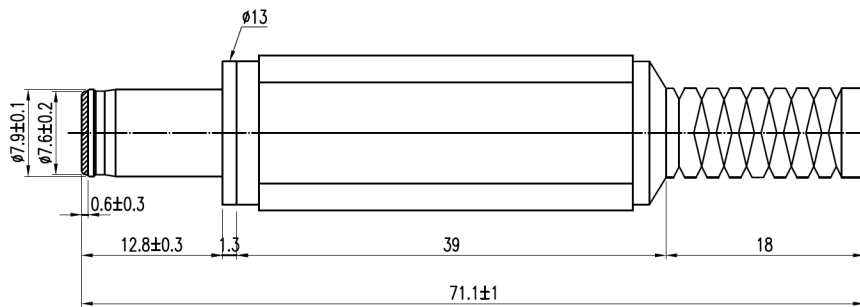


Power supply plug, straight version, with solder eyes and bend protection

3 pole

16

1636 07



Environmental conditions

Temperature range -40 °C/+85 °C

Materials

Insulating body PBT GF, V-0 according to UL94
Contact CuZn, nickel-plated
Housing PE

Mechanical data

Outer diameter 7.9 mm
Inner diameter 5.6 mm
Diameter center pin 0.9 mm

Connectable conductors for solder area

Cable diameter 6 mm

Electrical data (at T_{amb} 20 °C)

Rated current 10 A
Rated voltage 42 V DC
Rated impulse voltage 500 V/60 s
Insulation resistance ≥ 100 MΩ

Associated products

Counterparts
☞ 1614 21



www.toby.co.uk

16

1636 07

Designation	Pole Number	PU (Pieces)	MDQ (Pieces)
1636 07	3	100	200

Packaging:

in bulk, in a cardboard box or a plastic bag