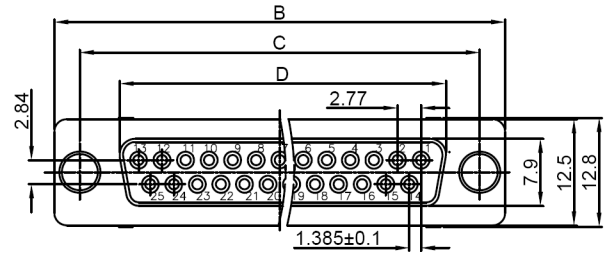
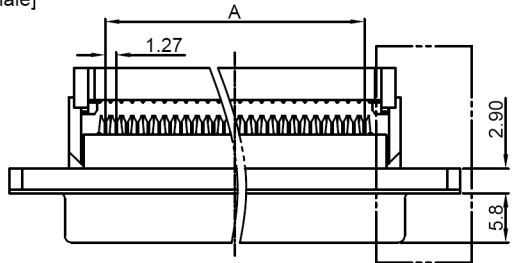
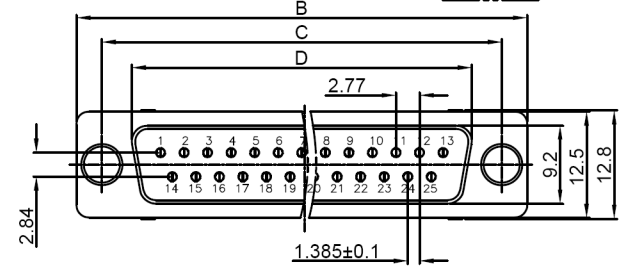
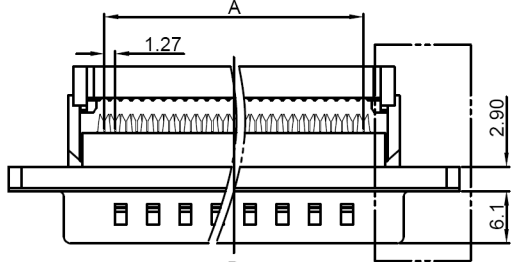


Dept	
Qty	
DC	1
ED	1
IE	1
ISO	1
PD	1
R&D	1
SD	1
QA	1
QC	1
QE	1

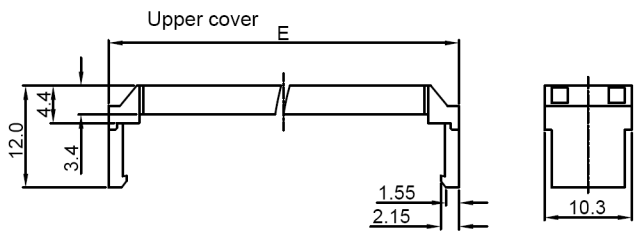
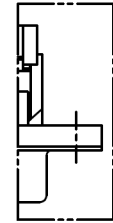
[Female]



[Male]



Without Screw / With Threaded (UNC#4-40) hole

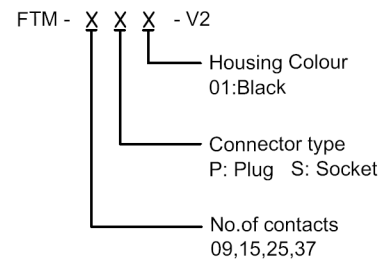


REV.	DESCRIPTION	DRAWN	CHECKED	APPROVED
A	NEW RELEASE	YCH 02/01/07'		LJC 02/01/07'
E	DRAWING UPDATE	JLZ 09/14/20'		

NOTES:

- Electrical characteristics:
 - Contact resistance: 30mΩ Max. Initial.
 - Dielectric withstanding voltage: 500V AC(rms) for 1 minute.
 - Insulation resistance: 1000MΩ Min.
- Environment characteristics:
 - Temperature range: -40°C~+105°C.
- Materials:
 - Insulator:PBT+Glass fiber
 - Shell:Steel
 - Contact: Copper alloy
 - Contact Plating: Gold+Nickel

4. Product number code:



Dimension

Position	A±0.1	B±0.2	C±0.2	D±0.2		E±0.2
				Male	Female	
9P	10.16	30.80	24.99	17.90	16.33	19.00
15P	17.78	39.14	33.32	26.50	24.66	27.34
25P	30.48	53.04	47.04	40.00	38.38	41.24
37P	45.72	69.32	63.50	56.50	54.84	57.52



GENERAL TOLERANCE		ANGLE TOLERANCE		PROJECTION		TITLE	
X.	±0.60	X.	±5°	UNITS	mm	IDC D-SUB	
.X	±0.38	.X	±3°	SHEET SIZE	A4	SERIES	FTM SERIES
.XX	±0.25	.XX	±2°	Toby Electronics Ltd Beaumont Road, Banbury Oxon, OX16 1TU		W: www.toby.co.uk E: sales@toby.co.uk T: +44 (0)1295271777	
DRAWING TYPE		CUSTOMER		 www.toby.co.uk			
SCALE	1:1	SHEET	1 OF 1				
DRAWING NO.		FTM - DS1036					