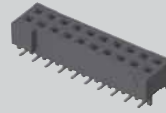
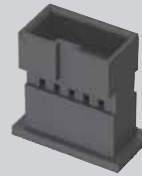




ITD2-05-D



S2M-110-02-L-D

T1M82-L-2426-01-L

(2,00 mm) .0787"

ITD2, T1M82, S2M SERIES

# DISCRETE WIRE COMPONENTS & TOOLING

## SPECIFICATIONS

### TOOLING

- Hand Tool:  
CAT-HT-182-2430-11
- Mini Applicator  
(24-26 AWG):  
CAT-MA-182-2426-XX-01
- Mini Applicator  
(28-30 AWG):  
CAT-MA-182-2830-XX-01

TYPE	POSITIONS PER ROW	ROW OPTION
ITD2 = Body, Loose	-05, -07, -10, -15, -20, -25, -30 (Standard sizes)	-D = Double Row

TYPE	WIRE GAUGE	01	PLATING OPTION
T1M82-L = Contact, Loose	-2426 = 24 to 26 AWG		-L = 10µ" (0,25 µm) Gold on contact
T1M82-R = Contact, Full Reel (17,000 Parts per Reel)	-2830 = 28 to 30 AWG		

Mates with:  
T2SD

## SPECIFICATIONS

**Insulator Material:**  
Black Liquid Crystal Polymer  
**Contact Material:** BeCu  
**Plating:** Sn or Au over 50µ" (1,27 µm) Ni  
**Operating Temp Range:**  
-55°C to +125°C  
**Contact Resistance:**  
10 mΩ max  
**Insertion Depth:**  
(3,05 mm) .120" to  
(3,25 mm) .128"  
**Insertion Force:**  
(Single contact only)  
2.0 oz (0,56 N) average  
**Withdrawal Force:**  
(Single contact only)  
1.5 oz (0,42 N) average  
**Max Cycles:**  
100 with 10µ" (0,25 µm) Au  
**RoHS Compliant:** Yes  
**Processing:**  
**Lead-Free Solderable:** Yes  
**SMT Lead Coplanarity:**  
(0,10 mm) .004" max

S2M	1	NO. OF POSITIONS	LEAD STYLE	PLATING OPTION	D	OPTION	OTHER OPTION
		05, 07, 10, 15, 20, 25, 30 (Per Row)	-01 = Through-hole -02 = Surface Mount	-F = Gold flash on contact, Matte Tin on tail -L = 10µ" (0,25 µm) Gold on contact, Matte Tin on tail		-K = (5,50 mm) .217" DIA Polyimide film Pick & Place Pad (-SM only) -LC = Locking Clip (Manual placement required) (-SM only)	-TR = Tape & Reel Packaging

## RECOGNITIONS



Due to technical progress, all designs, specifications and components are subject to change without notice.