

ACCELERATE®

(0.635 mm) .025"

ARF6 SERIES

RUGGED SLIM BODY SOCKET

ARF6-16-L-D-A-K-TR



ARF6-08-L-D-A-K-TR



SPECIFICATIONS

Mates with:
ARC6

Insulator Material:
LCP, Black
Contact Material: Copper Alloy
Terminal Material: Copper Alloy
Plating:
Au or Sn over
50 μm (1.27 μm) Ni
Operating Temp Range:
-40 °C to +125 °C
Shield Material:
Phosphor Bronze

PAM4	NRZ
56 Gbps	28 Gbps

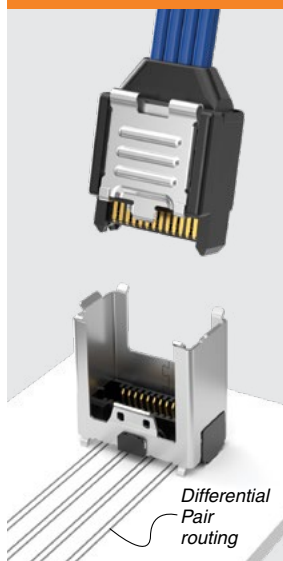
High-density
2-row design

8 and 16 pair
configurations

Rugged metal latching
and shielding

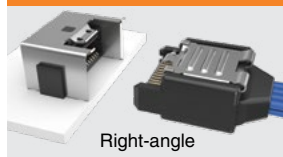
Rugged through-hole
reflowable weld tab

APPLICATION



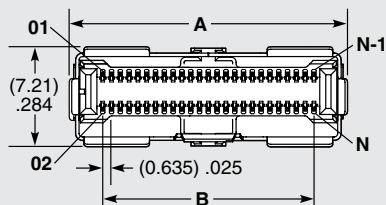
Differential
Pair
routing

IN DEVELOPMENT

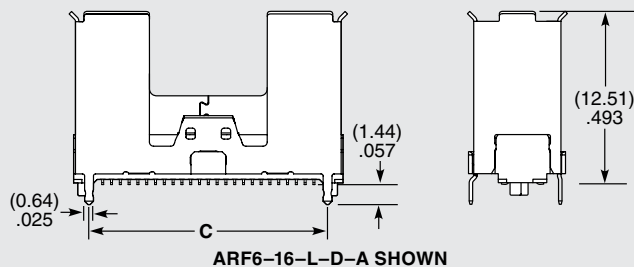


Right-angle

ARF6	NO. OF PAIRS	PLATING	ROW	OPTION	OPTION	TR
	-08 = 8 Pairs	-L = 10 μm (0.25 μm) Gold on contact area, Matte Tin on tail	-D = Double Row	-A = Alignment Pin	-K = Polyimide film Pick & Place Pad	-TR = Tape & Reel
	-16 = 16 Pairs	-S = 30 μm (0.76 μm) Gold on contact area, Matte Tin on tail				



NO. OF PAIRS	A	B	C	N	N-1
-08	(12.46) .491	(7.62) .300	(9.59) .378	26	25
-16	(20.08) .791	(15.24) .600	(17.21) .678	50	49



Notes:
Tape & Reel packaging and K-Dot are standard.
Some sizes, styles and options are non-standard, non-returnable.