



RF047-11RP9-11SP9-0100



RF047-01SP1-11SP9-0100

**RF047 SERIES**

# 50 Ω .047" DIA FLEXIBLE CABLE

**SPECIFICATIONS**

For complete specifications see [www.samtec.com?RF047](http://www.samtec.com?RF047)

**RF Connector:**

**Outer Contact Material:**

Brass (SMA),  
BeCu (HMHF1)

**Contact Material:**

Brass (SMA),  
BeCu (HMHF1)

**Insulator Material:**

PTFE

**Impedance:**

50 Ω

**Frequency Range:**

0~10 GHz (HMHF1)  
0~20 GHz (SMA)

**Dielectric Withstanding:**

1,000 Vrms (SMA)

**CCA-047 (.047")**

**Cable:**

50 Ω microwave

**Capacitance:**

95.14 pF/meter

**Max Attenuation**

(cable only):

1.15 @ 1 GHz for 1 meter

**Conductor Size:**

28 AWG (0.29 mm) .011" dia.

**Conductor Material:**

Silver plated copper

**Insulator Material:**

FEP

**Shield Material:**

Metallic Alloy

**Jacket Material:**

FEP

**Jacket Diameter:**

(1.42 mm) .056" dia.

**Bend Radius:**

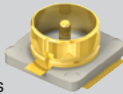
5 mm

**Mates with:**

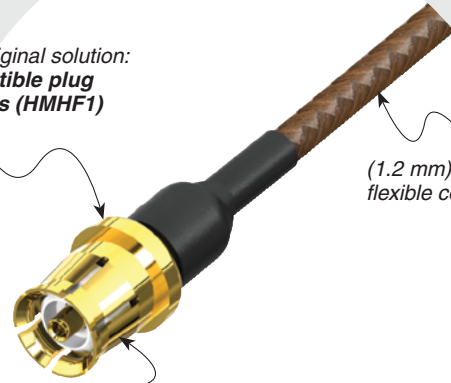
SMA, RSP-122811-01

**MATING SOLUTION**

- Micro RF PCB connectors for Micro High Frequency RFs
- MHF1 end mates with RSP-122811-01 (Cycles: 30 max.)



A Samtec original solution:  
**U.FL compatible plug to 500 cycles (HMHF1)**



(1.2 mm) .047" DIA flexible coax cable

High frequency performance to 10 GHz

**CABLE TYPE**

**END 1 CONNECTOR**

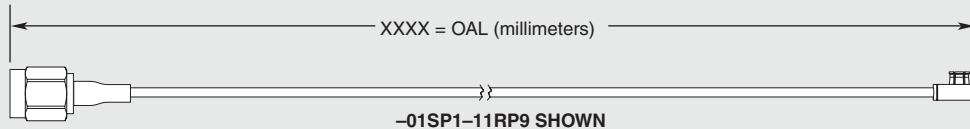
**END 2 CONNECTOR**

**OVERALL LENGTH**

**RF047**  
= (1.2 mm) .047" DIA  
28 AWG Flexible coax cable

Specify END OPTIONS from chart

— "XXXX"  
= Overall Length in millimeters  
-0100 (100 mm) 3.94" minimum



**ALSO AVAILABLE (MOQ Required)**

- Additional stripping and tinning options
- Contact Samtec.

**OTHER SOLUTIONS**

- Cable connector kits (see cable components catalog pages)

**END OPTIONS**

-01SP1 = SMA Straight Plug (30 μ" (0.76 μm) Gold on Center Contact, Gold Flash on Shell)	
-11SP9 = HMHF1 U.FL Straight Plug (30 μ" (0.76 μm) Gold on Center Contact, Gold Flash on Shell)	
-11RP9 = HMHF1 U.FL Right-angle Plug (30 μ" (0.76 μm) Gold on Center Contact, Gold Flash on Shell)	
-SING = Single Ended (End 2 Callout)	
-XXXXXX = Stripped & Tinned (End 2 Callout)	

**STRIPPED & TINNED (Dimensions in mm)**

CALLOUT	A	B	C
-303030	3.0	3.0	3.0
-303040	3.0	3.0	4.0
-403030	4.0	3.0	3.0
-403040	4.0	3.0	4.0
-404040	4.0	4.0	4.0

Both center conductor and braid shield are stripped, only the center conductor is tinned.