

(1.27 mm) .050"

SEAF-20-01-L-04-2-RA-GP-TR

SEAF-20-01-L-06-2-RA-GP-TR

SEAF-RA SERIES

HI-DENSITY RIGHT-ANGLE OPEN-PIN-FIELD

SPECIFICATIONS

For complete specifications and recommended PCB layouts see www.samtec.com?SEAF-RA

Insulator Material:

Black LCP

Contact Material:

Copper Alloy

Current Rating:

1.9 A per pin

(10 pins powered)

Operating Temp Range:

-55 °C to +125 °C

Plating:

Au or Sn over

50 μ" (1.27 μm) Ni

Working Voltage:

280 VAC

Mated Cycles:

100

RoHS Compliant:

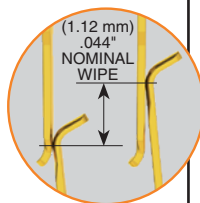
Yes

Lead-Free Solderable:

Yes

RECOGNITIONS

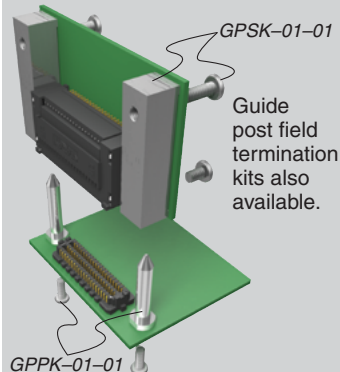
For complete scope of recognitions see www.samtec.com/quality



Board Mates:
SEAM, SEAMP

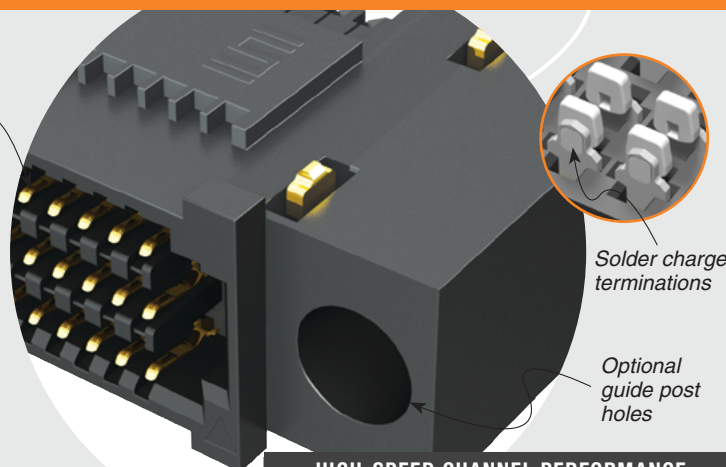
Cable Mates:
SEAC

OTHER SOLUTIONS



Up to
500 pins

Guide
post field
termination
kits also
available.



Solder charge
terminations

Optional
guide post
holes

Low insertion/
extraction forces

HIGH-SPEED CHANNEL PERFORMANCE

SEAF-RA/SEAM-RA

Rating based on Samtec reference channel.
For full SI performance data visit Samtec.com
or contact SIG@samtec.com

25
Gbps

SEAF

NO. PINS
PER ROW

01

PLATING
OPTIONNO. OF
ROWSSOLDER
TYPE

RA

OPTION

TR

-20, -30,
-40, -50

-L
= 10 μ" (0.25 μm)
Gold on contact area,
Matte Tin on solder tail

-S
= 30 μ" (0.76 μm)
Gold on contact area,
Matte Tin on solder tail

-04
= Four Rows

-06
= Six Rows

-08*
= Eight Rows

-10*
= Ten Rows

-1
= Tin/Lead Alloy
Solder Charge

-2
= Lead-Free
Solder Charge

-GP
= Guide
Post Hole

-LP
= Latch Post
(06 row 30
positions only)
(Mates to
SEAC Series)

-K
= Polyimide
film Pick &
Place Pad

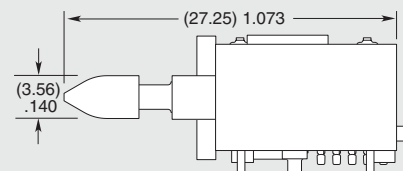
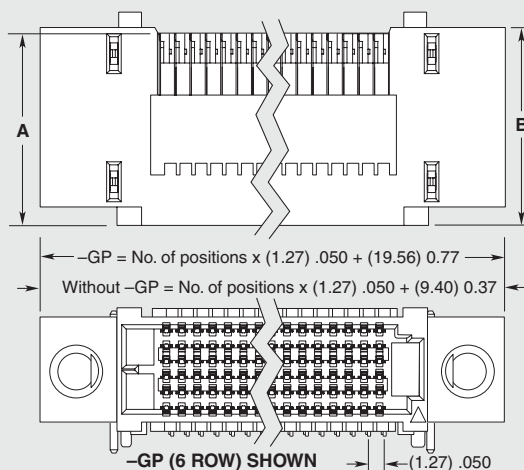
-TR
= Tape
& Reel

NO. OF ROWS	A	B	C
-04	(13.26) .522	(13.77) .542	(7.91) .311
-06	(15.80) .622	(16.31) .642	(10.45) .411
-08	(18.34) .722	(18.85) .742	(12.99) .511
-10	(20.88) .822	(21.39) .842	(15.53) .611

ALSO AVAILABLE (MOQ Required)

- Other platings

*Note: Fixturing required to process eight and ten row options, see www.samtec.com/searayfixture



-LP (6 ROW) SHOWN

Note:
Some sizes, styles and options are non-standard, non-returnable.