



TIGER EYE™
DISCRETE



(2.00 mm) .0787"

S2SD, S2SDT SERIES

TIGER EYE™ CABLE ASSEMBLY

SPECIFICATIONS

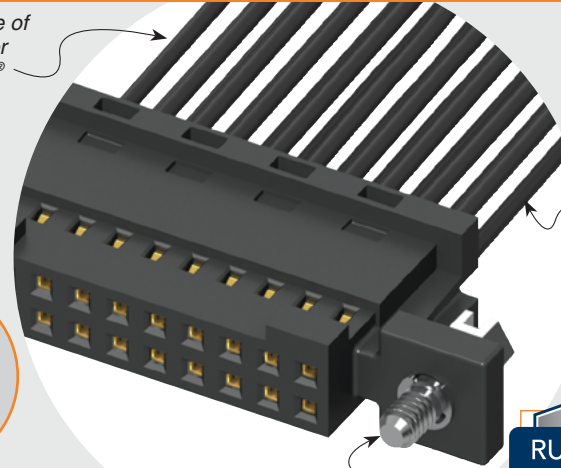
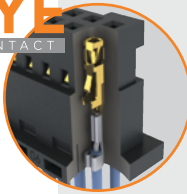
Insulator Material:
Black LCP
Contact Material:
BeCu
Plating:
Au over 50 μ" (1.27 μm) Ni
Wire:
24, 26, 28 or 30 AWG
Operating Temp Range:
-10 °C to +105 °C (PVC)
-40 °C to +125 °C (*Teflon®)
Current Rating (S2SD-24/T2M):
3.8 A per pin
(2 pins powered)
Voltage Rating:
250 VAC
RoHS Compliant:
Yes

*DuPont™ Teflon® is a registered trademark of the E.I. du Pont de Nemours and Company or its affiliates.

Mates with:
T2M

Choice of PVC or Teflon® cable

TIGER EYE™
CONTACT



24, 26, 28 or 30 Wire gauge

Optional screw down

RUGGEDIZED
BY SAMTEC

- Tiger Eye™ contacts
- Retention latches

ALSO AVAILABLE (MOQ Required)

- Other sizes

APPLICATION

-24C CABLE COLOR CODING	
PIN	COLOR
1	BROWN
2	RED
3	ORANGE
4	YELLOW
5	GREEN
6	VIOLET
7	GRAY
8	WHITE
9	BLACK
10	BLUE
ETC	REPEAT

TYPE	PINS PER ROW	WIRE GAUGE	PLATING OPTION	ASSEMBLED LENGTH	END OPTION	END 2 OPTION
S2SD = Double Row PVC Cable	-05, -07, -10, -15, -20, -25, -30 (Standard sizes)	-24 -24C = Color Coded Cable (S2SD only)	-L = 10 μ" (0.25 μm) Gold on contact	- "XX.XX" = Wire Length in Inches (69.85 mm) 02.75" min.	-S = Single End -D = Double End	(Only available with -D, -DR & -DS) -NUS = Notch up, straight (Pin 1 to Pin N-1) -NDS = Notch down, straight (Pin 1 to Pin 2) -NUX = Notch up, crossed (Pin 1 to Pin N) -NDX = Notch down, crossed (Pin 1 to Pin 1)

Specify "S" for single ended and "D" for double ended.
 -(XR) = Retention Latch (-SR mates with T2M-WT)
 -(XS) = Screw Down (10 positions minimum) (mates with T2M-DS)

Notes:
For wiring option information refer to drawing on web.
Teflon® cable is intended for crimp only.
Some lengths, styles and options are non-standard, non-returnable.

Due to technical progress, all designs, specifications and components are subject to change without notice.

WWW.TOBY.CO.UK

All parts within this catalog are built to Samtec's specifications. Customer specific requirements must be approved by Samtec and identified in a Samtec customer-specific drawing to apply.